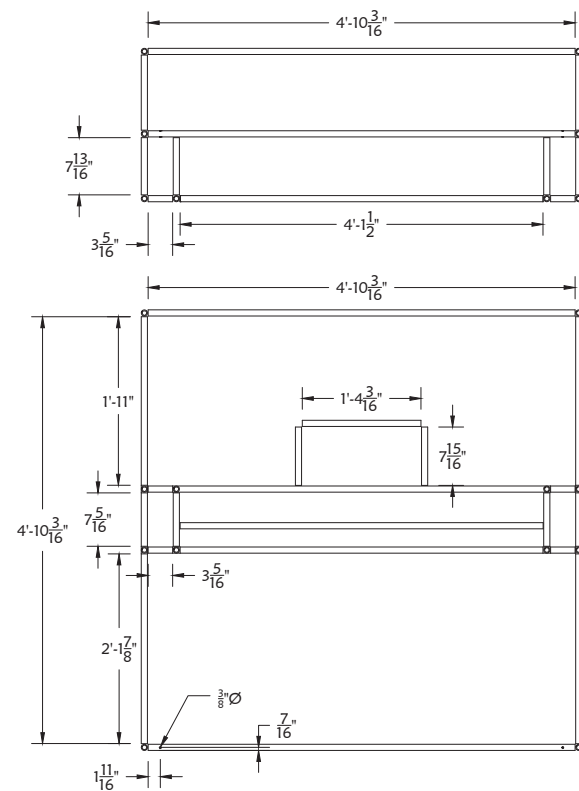


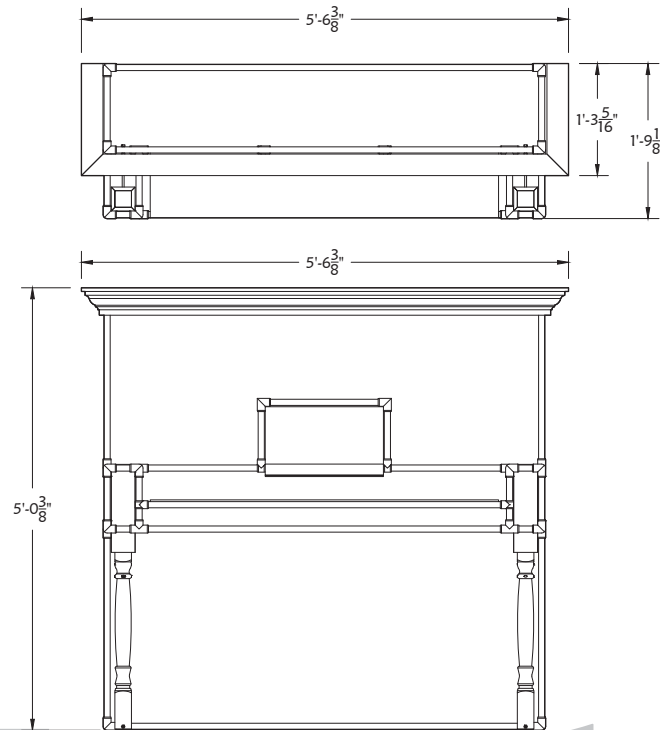
Build 1 from $\frac{1}{2}$ " sch. 40 PVC and various other materials.
DRY FIT ALL PARTS TOGETHER BEFORE GLUING.

1 Piano
M2



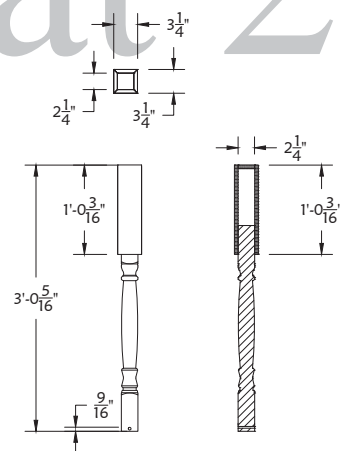
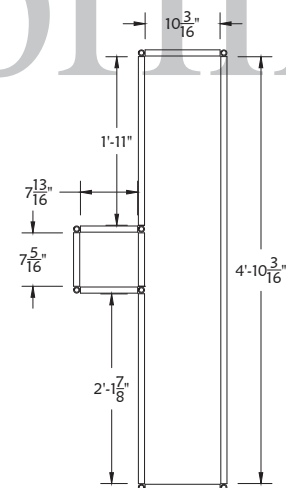
FITTINGS REMOVED FOR CLARITY.

4 PVC Frame 1"=1'-0"
M2



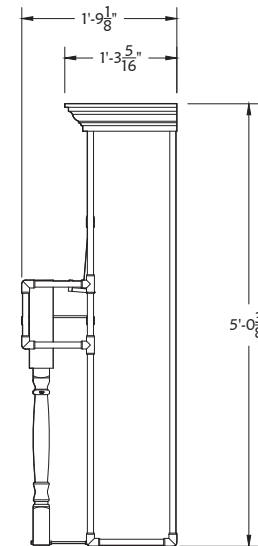
Build 1 from $\frac{1}{2}$ " sch. 40 PVC and various other materials.
DRY FIT ALL PARTS TOGETHER BEFORE GLUEING.

2 Piano Ortho 1"=1'-0"
M2



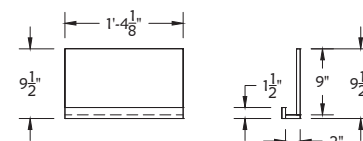
Build 2 from existing table legs and $\frac{1}{2}$ " MDF. Glue and brad.

5 Piano Legs 1"=1'-0"
M2



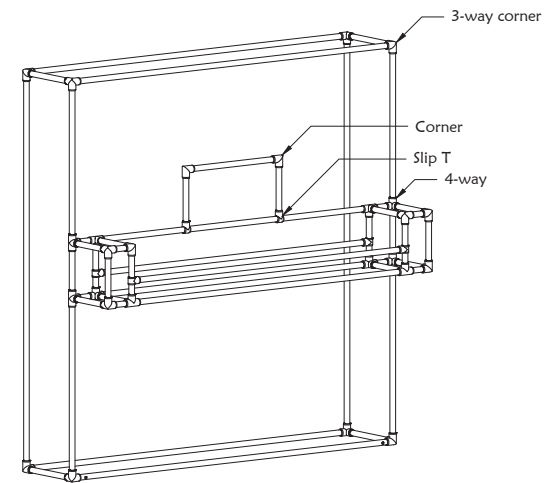
Build 2 from 1/4-20 threaded rod and nuts.

6 Piano Leg Bolts 3"=1'-0"
M2

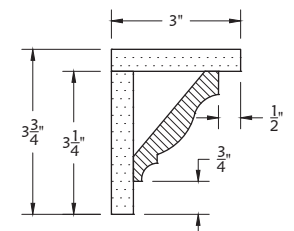


Build 1 from $\frac{1}{2}$ " MDF. Glue and brad.

7 Sheet Music Holder 1"=1'-0"
M2

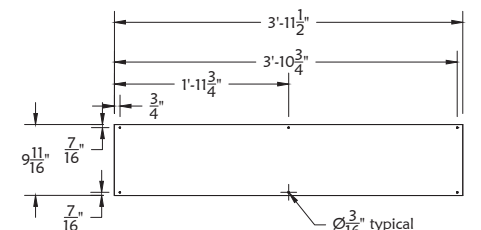


3 PVC Frame with fittings
M2



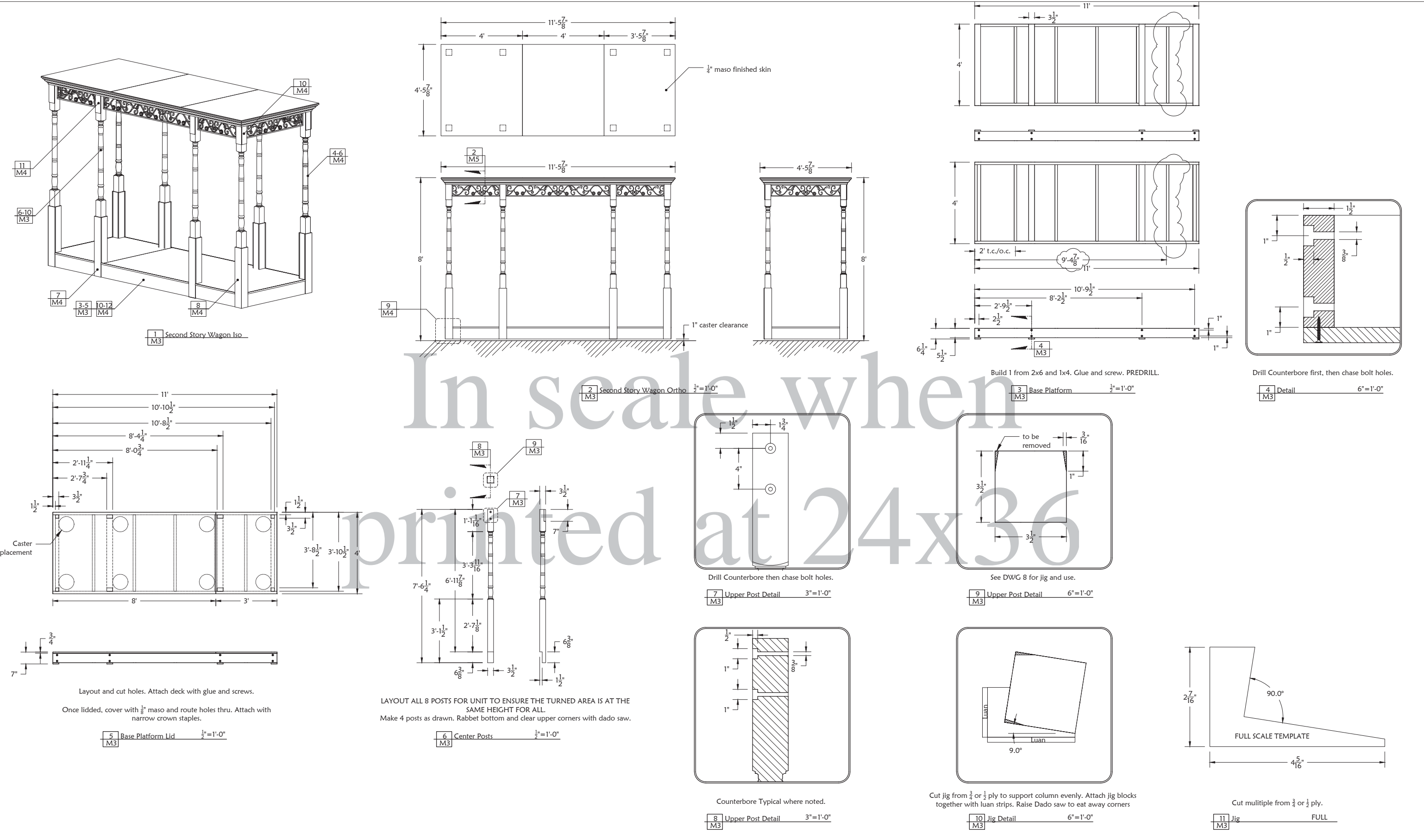
Build 8 linear feet from purchased trim and $\frac{1}{2}$ " MDF. Glue and brad. Attach from behind with screws thru PVC.

8 Crown 6"=1'-0"
M2



Build 1 from $\frac{1}{4}$ " P-95 Plexiglass.

9 Key Plexi 1"=1'-0"
M2



Music Man



Plate Name: Second Story Wagon

Director: JVellenga

Tech Director: BStark

Date: 9/25/12

Rev: 9/26/12

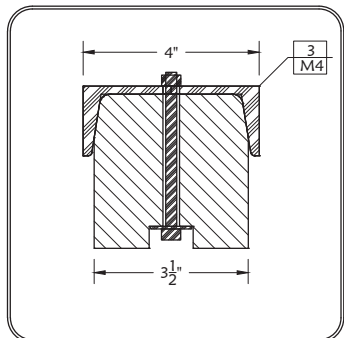
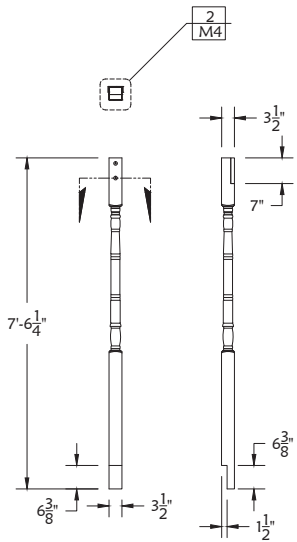
Scenic Designer: KVoecks

Drawn by: BStark

Scale: As Noted

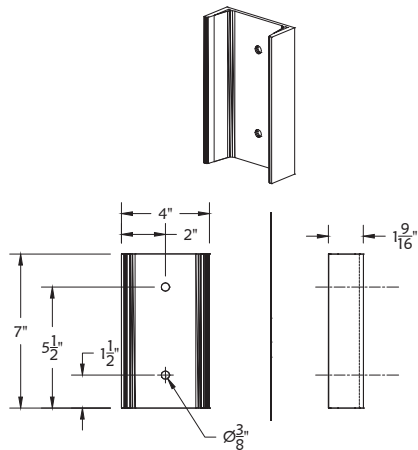
Plate:

M3



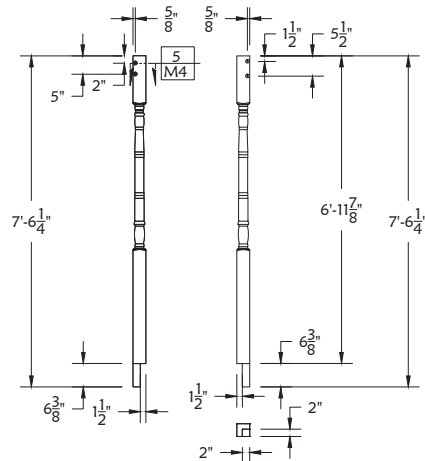
Attach Channel with 1/4-20x 3.5" hex bolts.

2 Upper Post Detail 3"=1'-0"



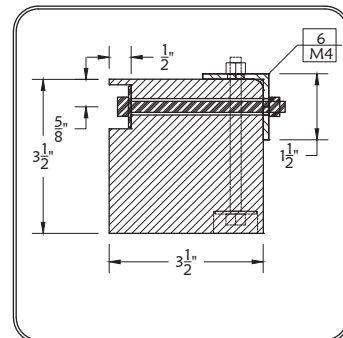
Cut 4 from C4x5(scrap).

3 Post Channel 3"=1'-0"



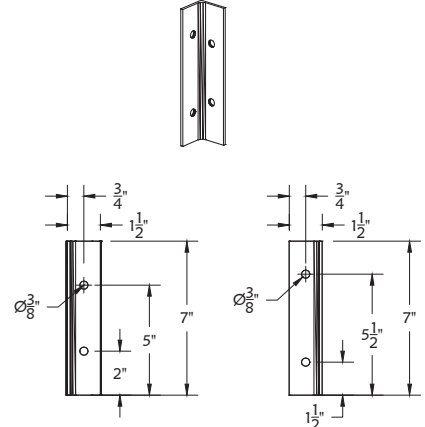
LAYOUT ALL 8 POSTS FOR UNIT TO ENSURE THE TURNED AREA IS AT THE SAME HEIGHT. Make 2 posts as drawn; 2 R&R. Rabbet bottom with dado saw.

4 Corner Posts 1/2"=1'-0"



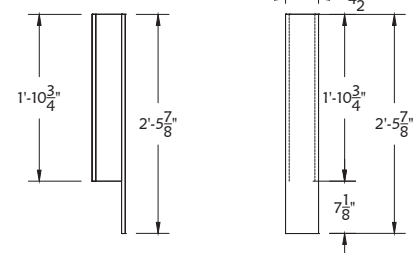
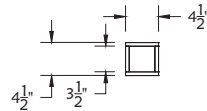
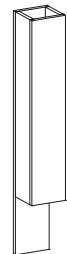
Attach angle with 1/4-20x 3.5" hex bolts.

5 Upper Corner Post Detail 3"=1'-0"



Cut 4 from .125x1.5x1.5 angle.

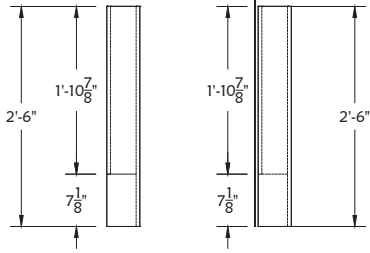
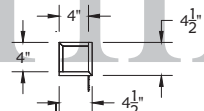
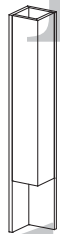
6 Corner Post Angle 3"=1'-0"



Cut Pieces for 4 from 1/2 plywood. Attach with screws. See DWG9 for screw placement. Sand fill for paint finish.

Install once columns are bolted to base platform.

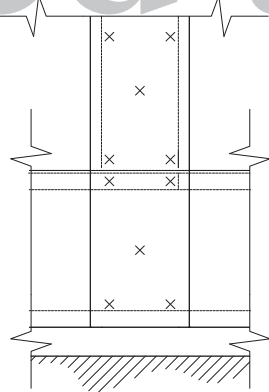
7 Center Post Base Trim 1"=1'-0"



Cut Pieces for 4 from 1/2 plywood. Attach with screws. See DWG9 for screw placement. Sand fill for paint finish.

Install once columns are bolted to base platform.

8 Corner Post Base Trim 1"=1'-0"



Sink flush. Fill and sand for paint finish.

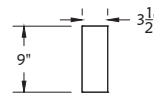
9 Post Base Trim Screw Placement 3"=1'-0"



Cut Pieces for 4 from 1/2 plywood. Attach with narrow crowns ONLY. Sand fill fasteners and corners for paint finish.

Install once columns are bolted to base platform.

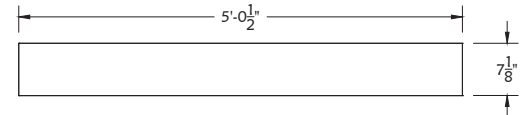
10 Corner Post Upper Trim 1"=1'-0"



Cut Pieces for 4 from 1/2 plywood. Attach with narrow crowns ONLY. Sand fill fasteners and corners for paint finish.

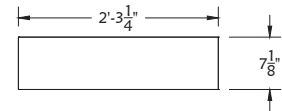
Install once columns are bolted to base platform.

11 Center Post Upper Trim 1"=1'-0"



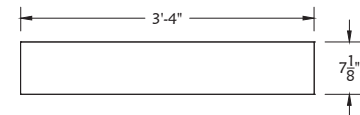
Rough cut length (to be fitted once columns in place) for 2 from 1/4 luan. Attach with screws. Fill and sand for paint finish.

12 Center Base Platform Facing 1"=1'-0"



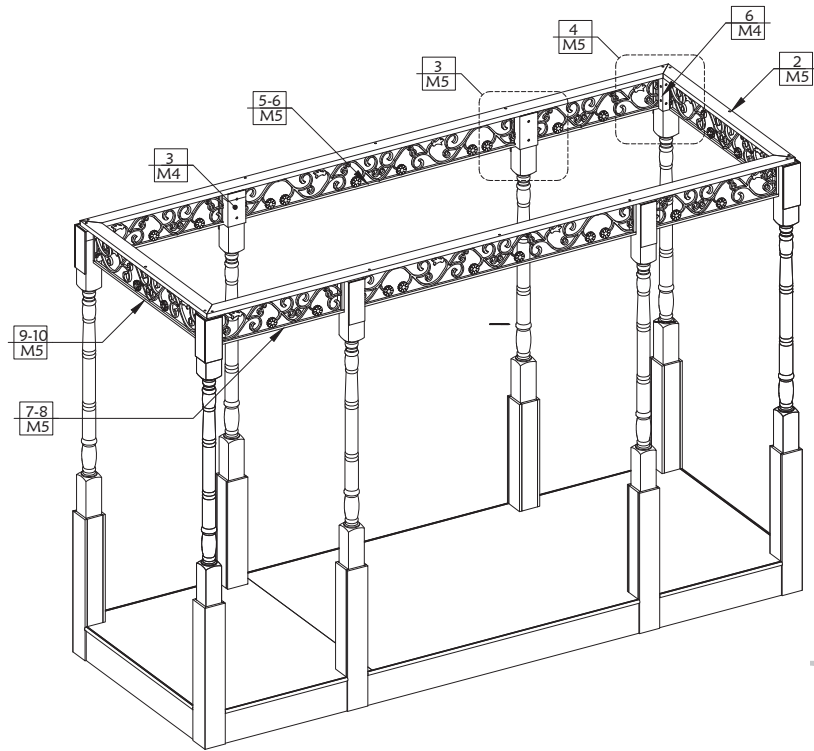
Rough cut length (to be fitted once columns in place) for 4 from 1/4 luan. Attach with screws. Fill and sand for paint finish.

13 Corner Base Platform Facing 1"=1'-0"



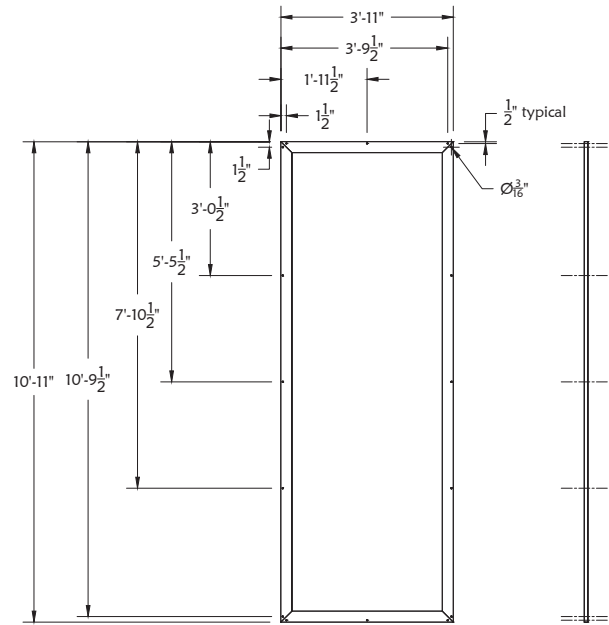
Rough cut length (to be fitted once columns in place) for 2 from 1/4 luan. Attach with screws. Fill and sand for paint finish.

14 End Base Platform Facing 1"=1'-0"



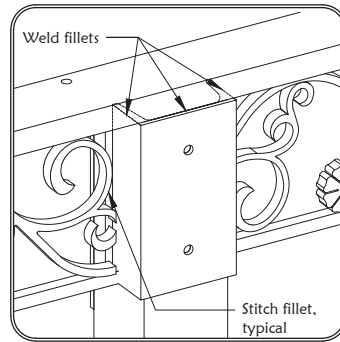
Deck and Crown Removed for clarity.

1 Assembled Posts and Base
M5



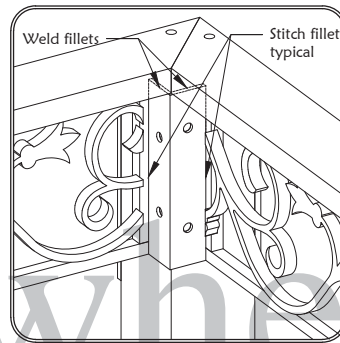
Build 1 from 1x3x16g steel tube. Drill and countersink BOTH SIDES of holes for drywall screws.

2 Upper Metal Frame $\frac{1}{2}$ "=1'-0"
M5



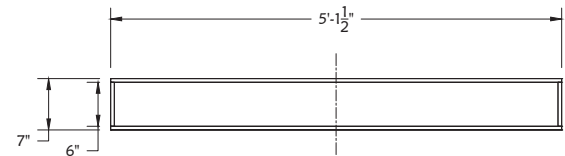
Weld in place with posts to ensure square.

3 Center Post Weld Detail
M5



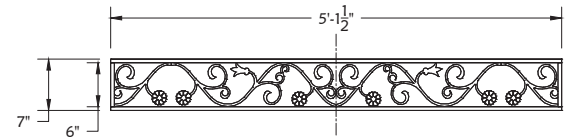
Weld in place with posts to ensure square.

4 Corner Post Weld Detail
M5



Build 2 from $\frac{1}{2}$ x $\frac{1}{2}$ x16g tube. Check length with fit up unit before welding. Weld fillets and one face (interior).

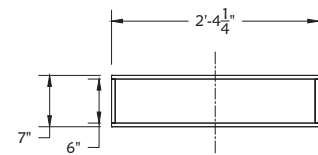
5 Center Valence Panel 1"=1'-0"
M5



Attach decor to frame with $\frac{3}{8}$ " tek screws through tabs in decor panel.

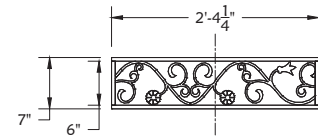
Trim decor panel with portaband.

6 Center Valence Panel Decor 1"=1'-0"
M5



Build 4 from $\frac{1}{2}$ x $\frac{1}{2}$ x16g tube. Check length with fit up unit before welding. Weld fillets and one face (interior).

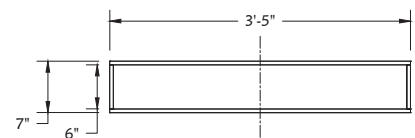
7 Side Valence Panel 1"=1'-0"
M5



Attach decor to frame with $\frac{3}{8}$ " tek screws through tabs in decor panel.

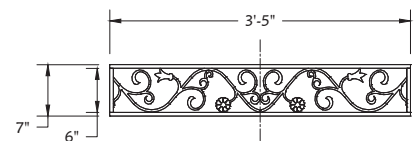
Trim decor panel with portaband.

8 Center Valence Panel Decor 1"=1'-0"
M5



Build 2 from $\frac{1}{2}$ x $\frac{1}{2}$ x16g tube. Check length with fit up unit before welding. Weld fillets and one face (interior).

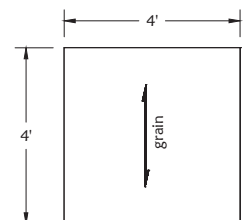
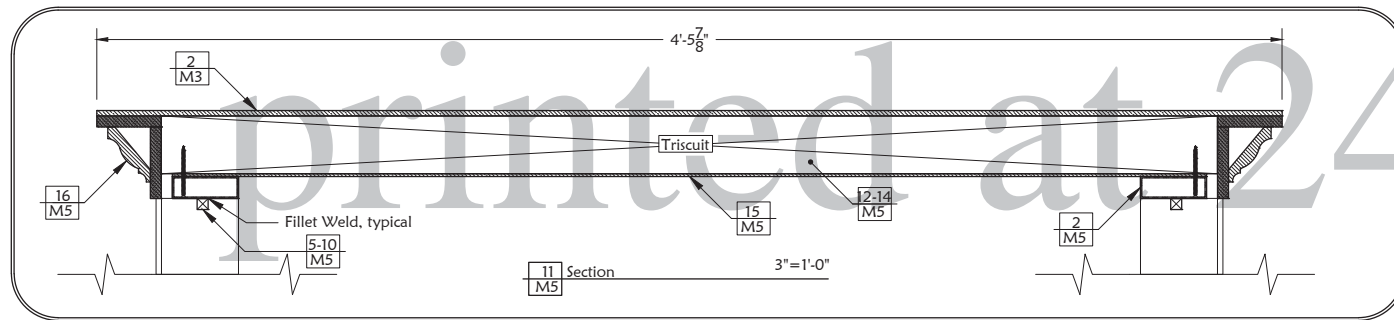
9 End Valence Panel 1"=1'-0"
M5



Attach decor to frame with $\frac{3}{8}$ " tek screws through tabs in decor panel.

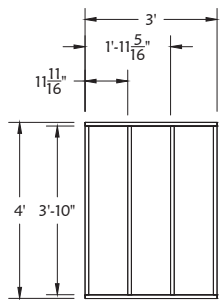
Trim decor panel with portaband.

10 End Valence Panel Decor 1"=1'-0"
M5



Pull 2 stock triscuits

12 Stock Triscuit $\frac{1}{2}$ "=1'-0"
M5



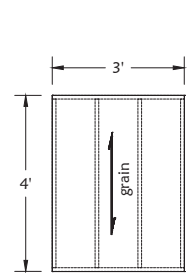
Build 1 from ripped 2x4-Resurface BOTH glue edges. Glue and medium crown.

13 Custom Triscuit Frame $\frac{1}{2}$ "=1'-0"
M5



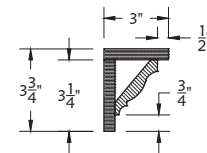
Skin with $\frac{3}{4}$ " and $\frac{1}{2}$ " plywood. BRUSH glue on frame edges, medium crown every 6"

14 Custom Triscuit Skin $\frac{1}{2}$ "=1'-0"
M5



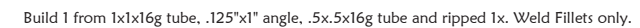
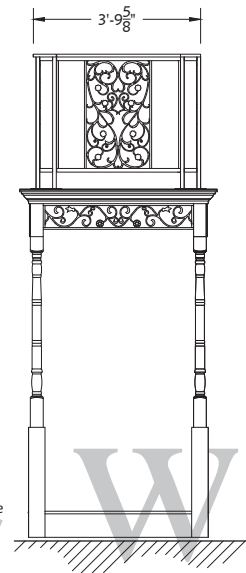
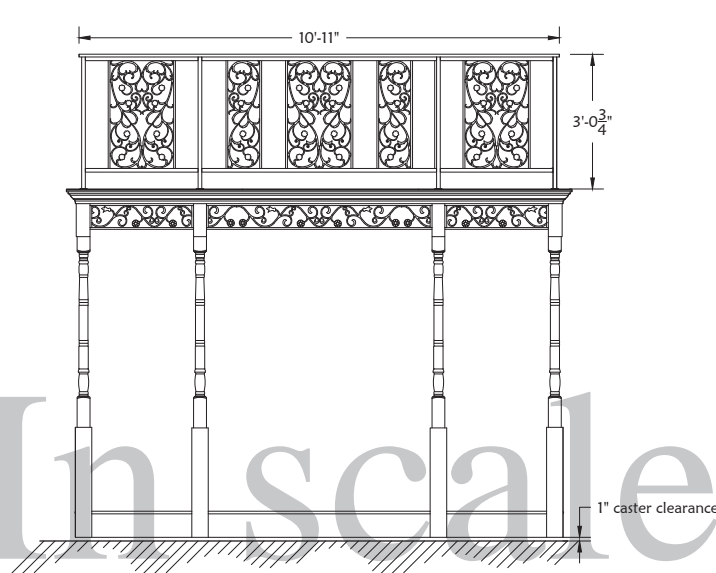
Cut pieces from $\frac{1}{8}$ " mso. T-Nail to steel frame after it is attached/welded.

15 Ceiling $\frac{1}{2}$ "=1'-0"
M5

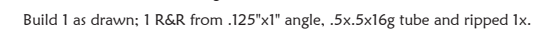
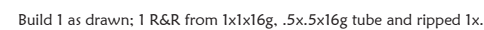
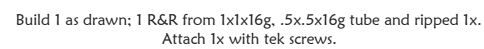
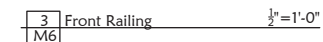


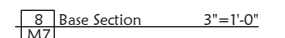
Build 3-12' lengths from $\frac{1}{2}$ " MDF and purchased trim. Glue and brad.

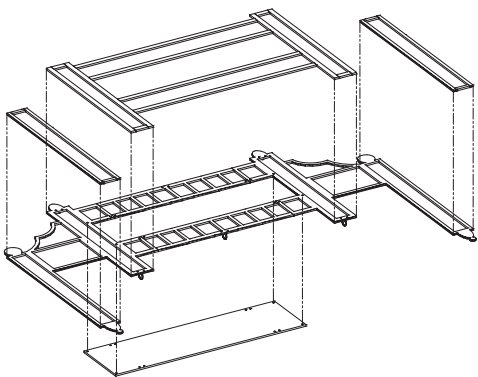
16 Crown Moulding 3"=1'-0"
M5



Attach Handrail with tech screws. Break off excess inside angle iron.

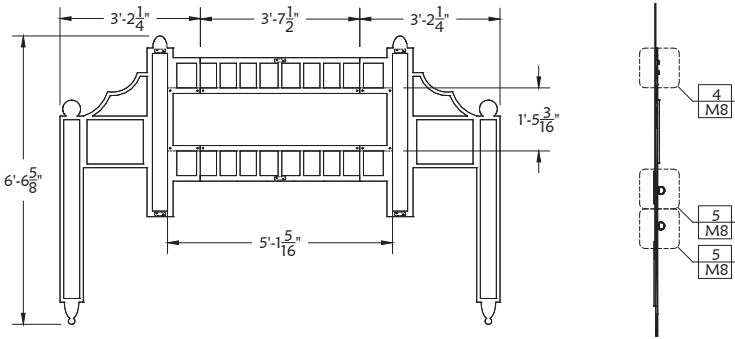






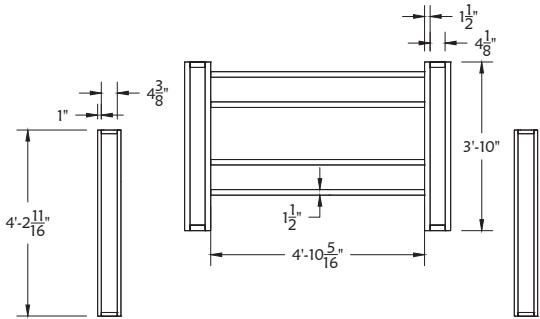
Assemble unit from CNC 1/2" MDF and additional strips. Use 1/4-20 FHSB and nylocks.

1 Livery Sign Assembly
M8



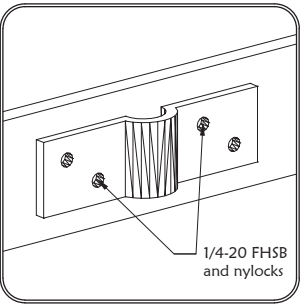
Assemble unit from CNC 1/2" MDF. Use 1/4-20 FHSB and nylocks.

2 Livery Sign 1/2"=1'-0"
M8

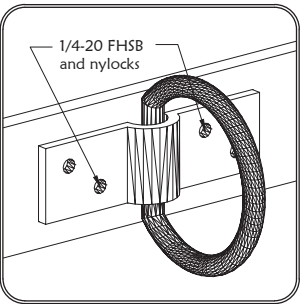


Cut and attach additional strips of 1/2" MDF with glue and brads.

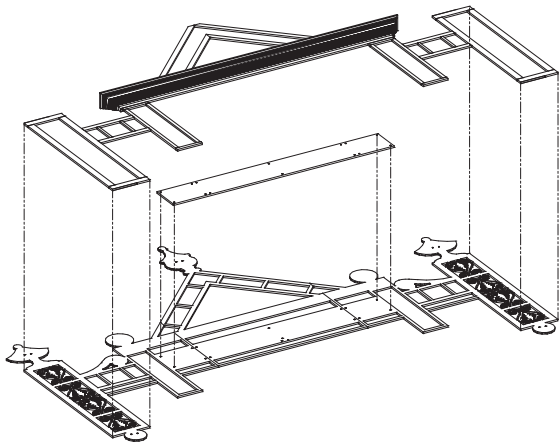
3 Livery Sign Add on Strips 1/2"=1'-0"
M8



4 Cable Keeper Detail
M8

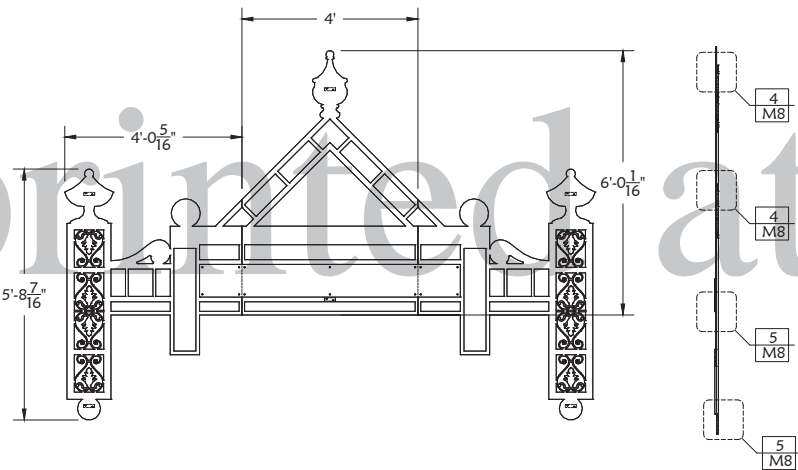


5 D Ring Detail
M8



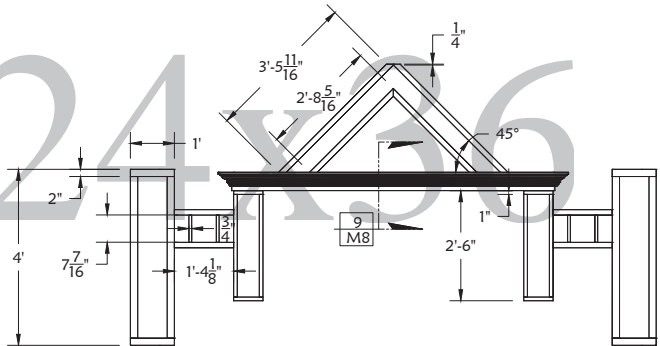
Assemble unit from CNC 1/2" MDF and additional strips. Use 1/4-20 FHSB and nylocks.

6 Rivier City Sign Assembly
M8



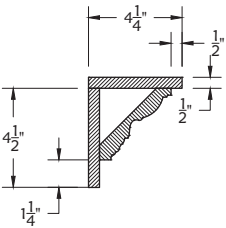
Assemble unit from CNC 1/2" MDF. Use 1/4-20 FHSB and nylocks.

7 Rivier City Sign CNC 1/2"=1'-0"
M8



Cut and attach additional strips of 1/2" MDF with glue and brads.

8 Rivier City Sign Add on Strips 1/2"=1'-0"
M8



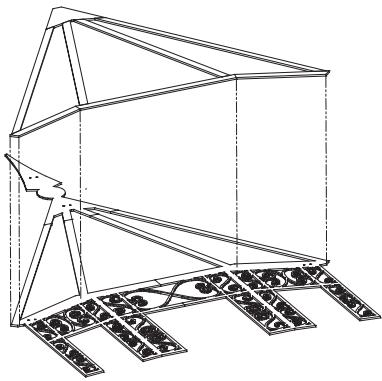
Build 12' of trim as drawn from 1/2" MDF and purchased crown. Glue and Brad.

9 Trim 3"=1'-0"
M8



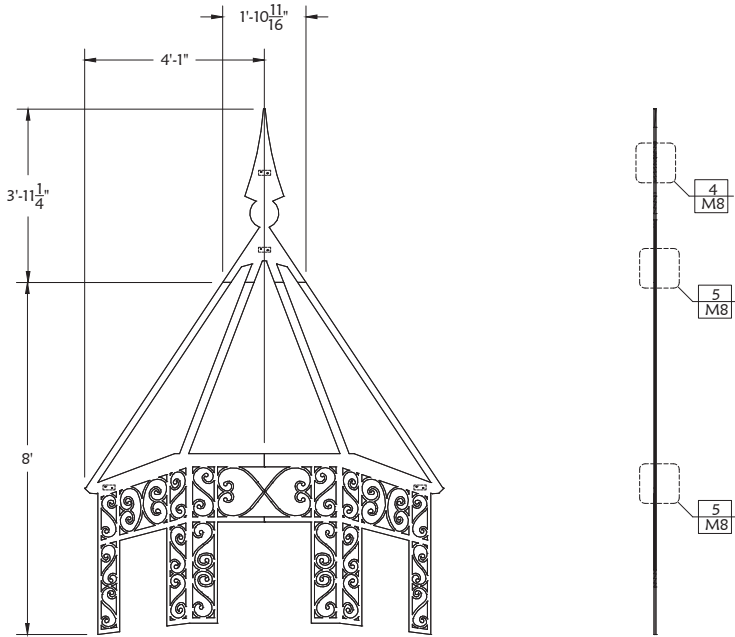
Music Man

Plate Name: Flying Elements1			Plate: M8
Director: JVellenga	Tech Director: BStark	Date: 10/13/12 Rev: ..	
Scenic Designer: KVoecks	Drawn by: BStark	Scale: As Noted	



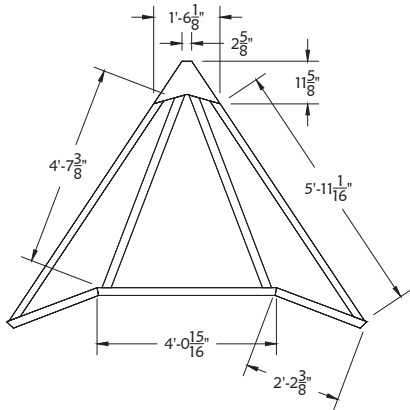
Assemble unit from CNC 1/2" MDF and additional strips. Use 1/4-20 FHSB and nylocks.

1 Gazebo Assembly
M9



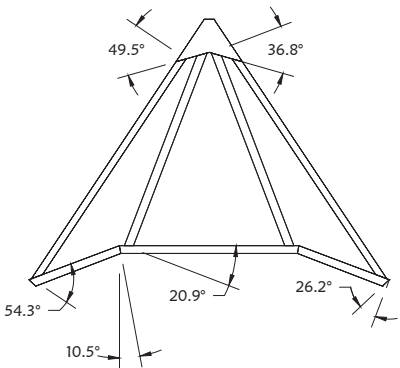
Assemble unit from CNC 1/2" MDF. Use 1/4-20 FHSB and nylocks.

2 Gazebo 1/2"=1'-0"
M9



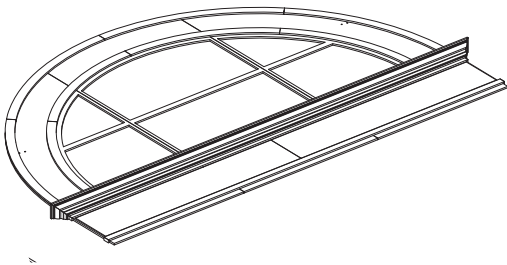
Cut and attach additional strips of 1/2" MDF with glue and brads.

3 Gazebo Add on Strips 1/2"=1'-0"
M9



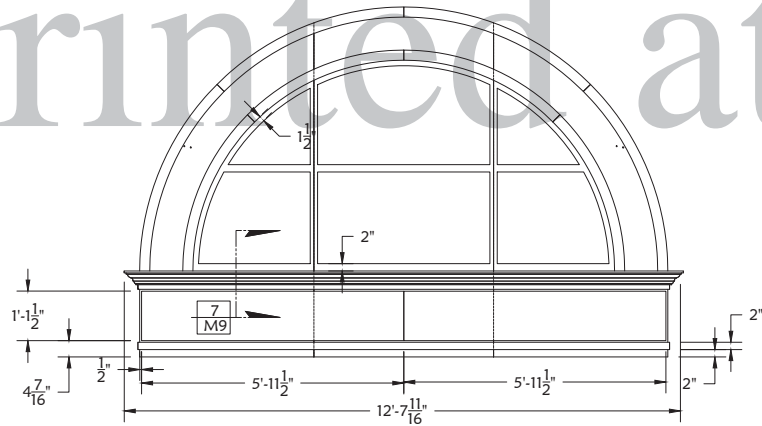
Cut and attach additional strips of 1/2" MDF with glue and brads.

4 Gazebo Strip angles 1/2"=1'-0"
M9



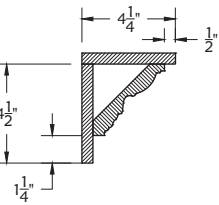
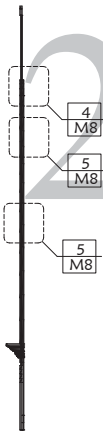
Assemble unit from CNC 1/2" MDF and additional strips. Use 1/4-20 FHSB and nylocks.

5 Gym Window Assembly
M9



Assemble unit from CNC 1/2" MDF and Iuan. Use 1/4-20 FHSB and nylocks. Glue and brad.

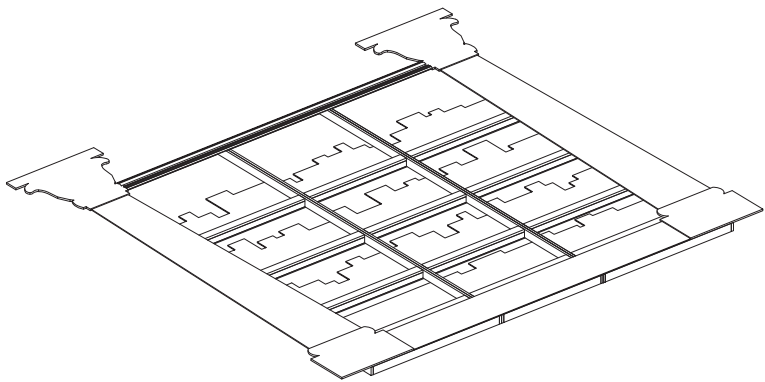
6 Gym Window 1/2"=1'-0"
M9



Build 16' of trim as drawn. Glue and Brad.

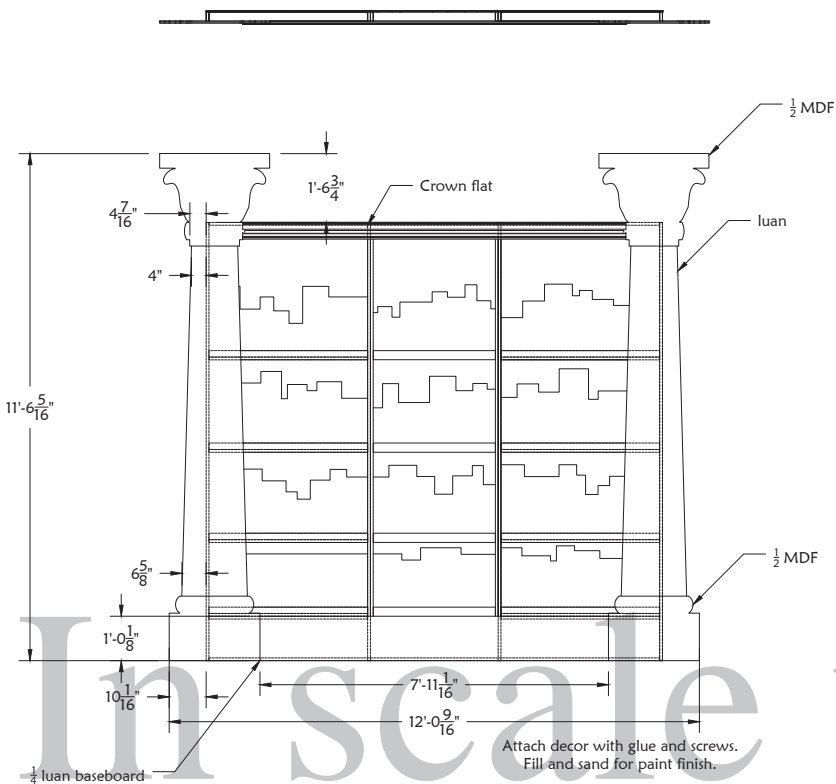
7 Trim 3"=1'-0"
M9

In scale when
printed at 24x36



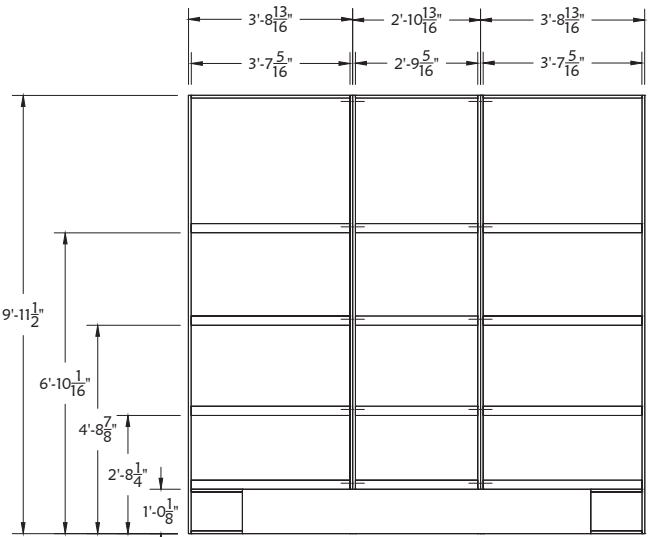
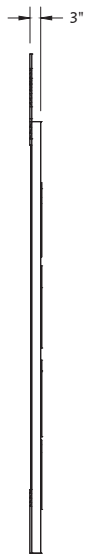
Assemble unit from CNC luan, MDF, and lumber.

1 Library Flat ISO
M10



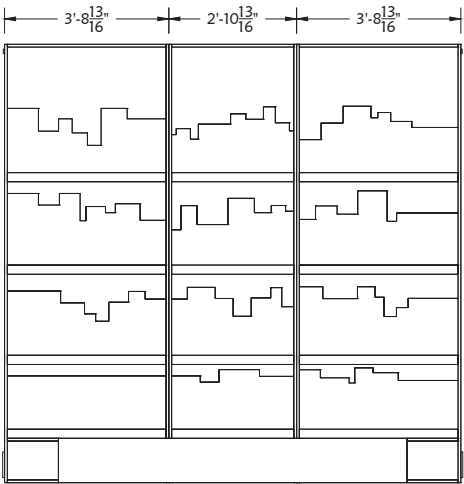
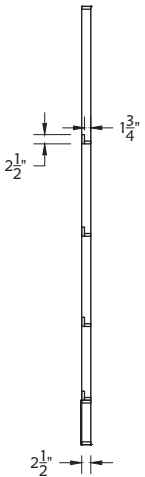
Attach decor with glue and screws. Fill and sand for paint finish.

2 Library Ortho
M10 1/2"=1'-0"



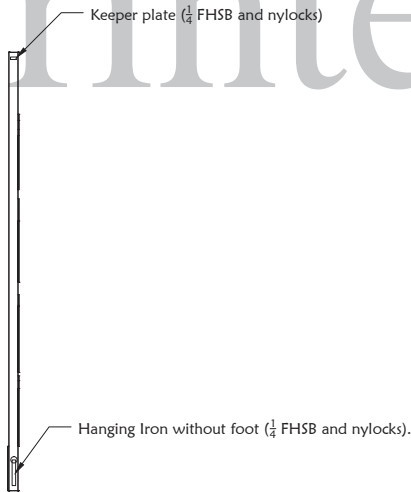
Build frames from ripped 1x6. Glue and medium crown. Join frames with FH5B and nylocks behind stelf verticals.

3 Library Frame
M10 1/2"=1'-0"



Attach CNC luan with glue and narrow crown to back of frames. Rigging points typical of each offstage side.

4 Library Frame with CNC
M10 1/2"=1'-0"



Music Man

Plate Name: Flying Elements3

Director: JVellenga

Tech Director: BStark

Date: 10/13/12 Rev: ..

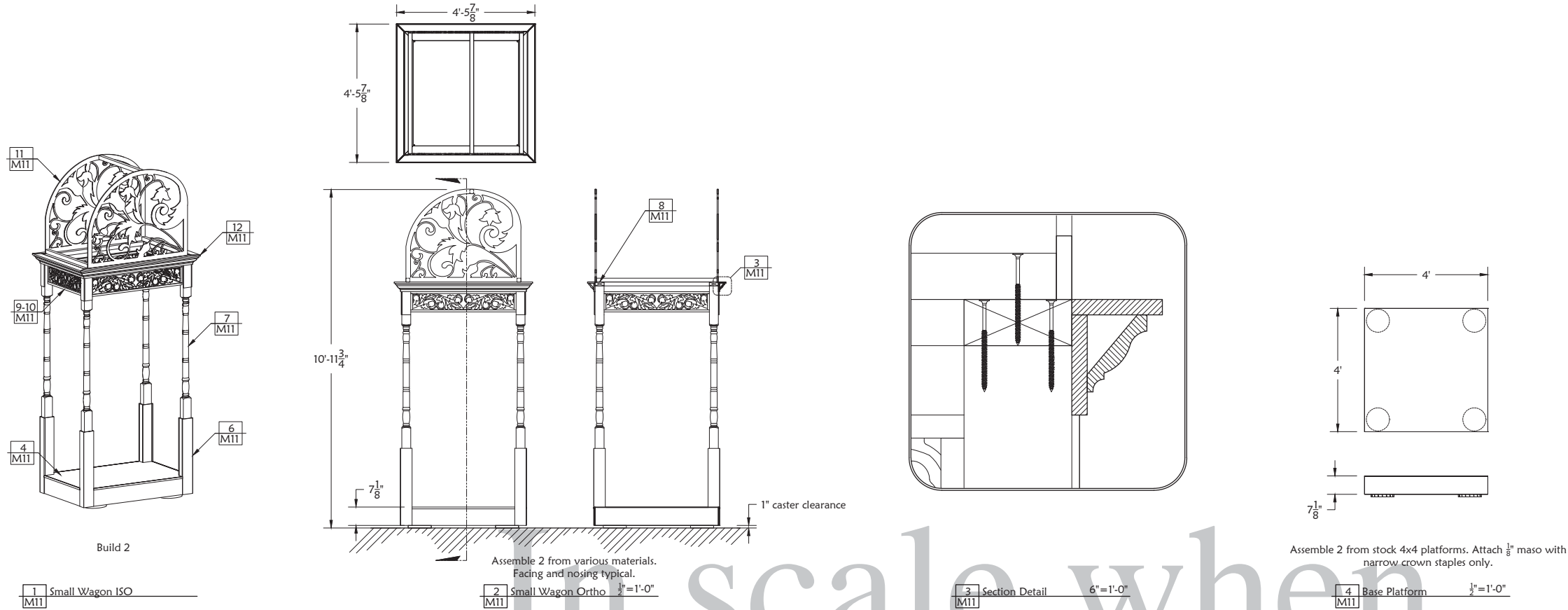
Scenic Designer: KVoecks

Drawn by: BStark

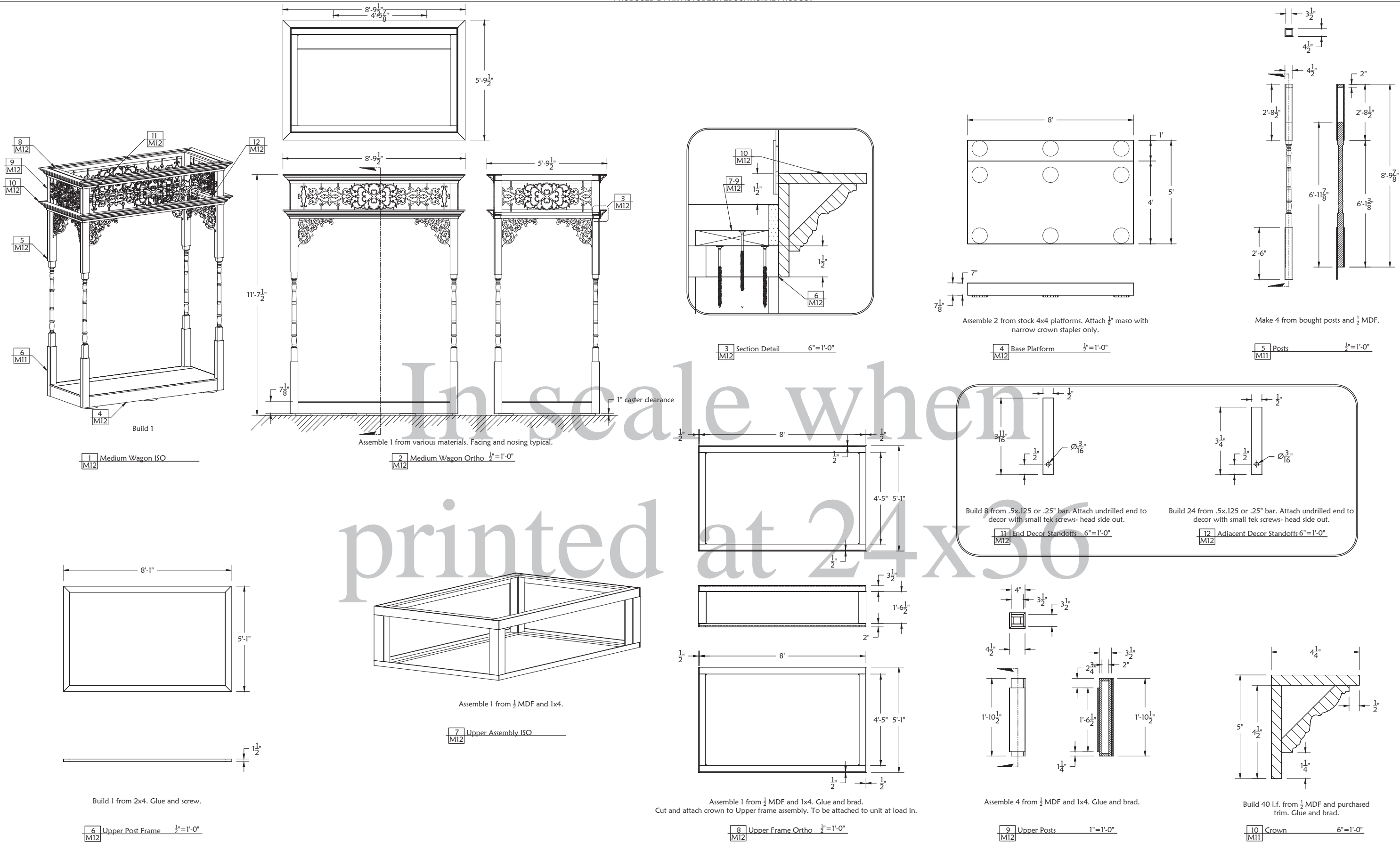
Scale: As Noted

Plate:

M10

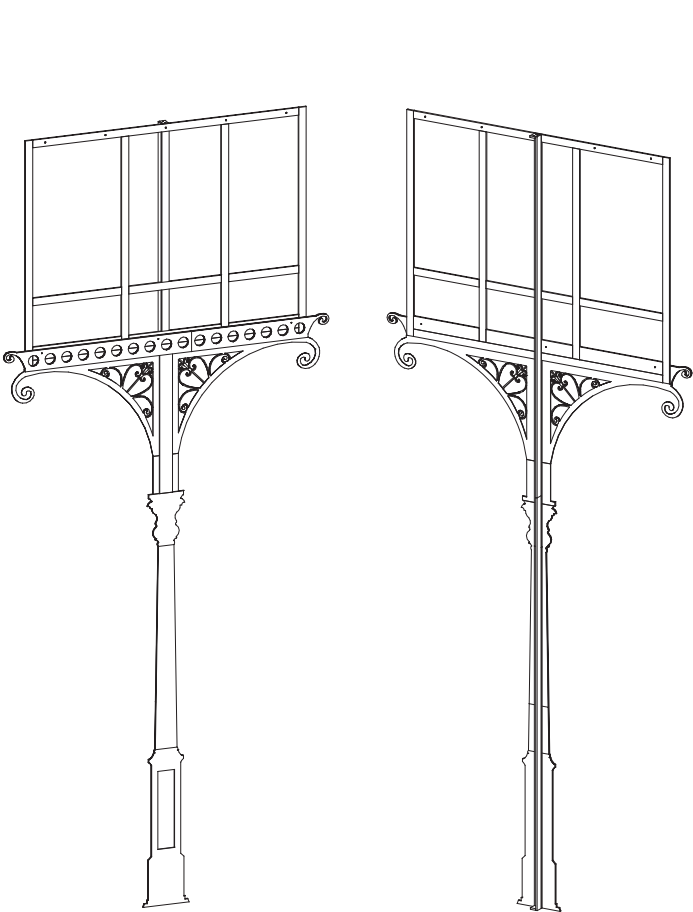


in scale when
printed at 24x36



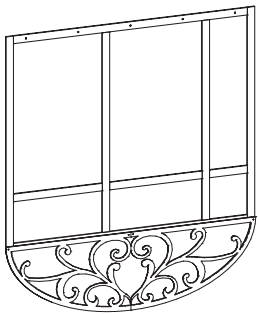
Music Man

Plate Name: Medium Wagon			Plate:
Director: JVellenga	Tech Director: BStark	Date: 10/22/12	Rev: ..
Scenic Designer: KVoecks	Drawn by: BStark	Scale: As Noted	M12



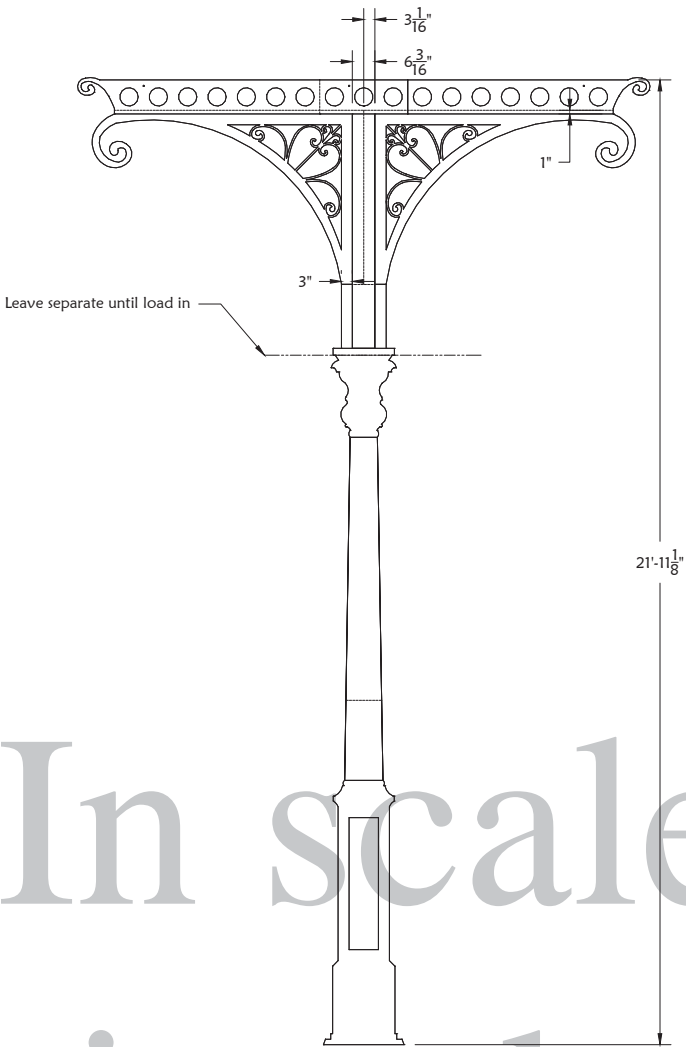
Assemble unit from CNC 1/2 MDF and luan. Bolt Masking frame on with 1/4-20 FHSB and nylocks after they are covered with black fabric.

1 False Pro Columns
M13



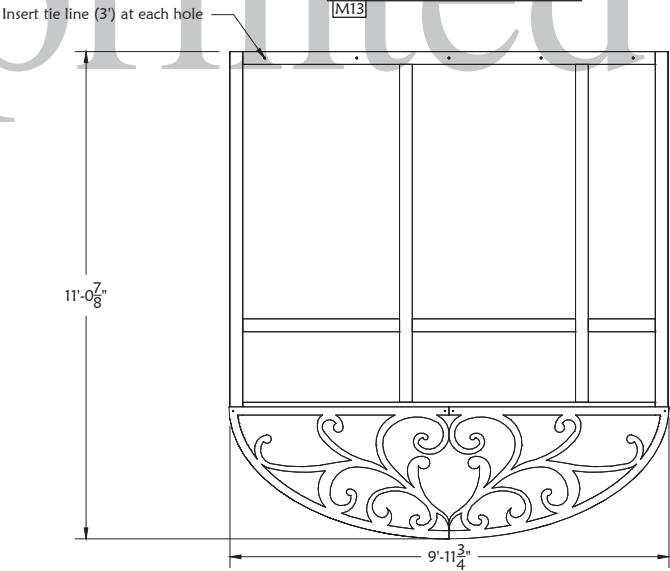
Assemble unit from CNC 1/2 MDF and 1x4. Bolt Masking frame on with 1/4-20 FHSB and nylocks. after it is covered with black fabric.

5 False Pro Header
M13



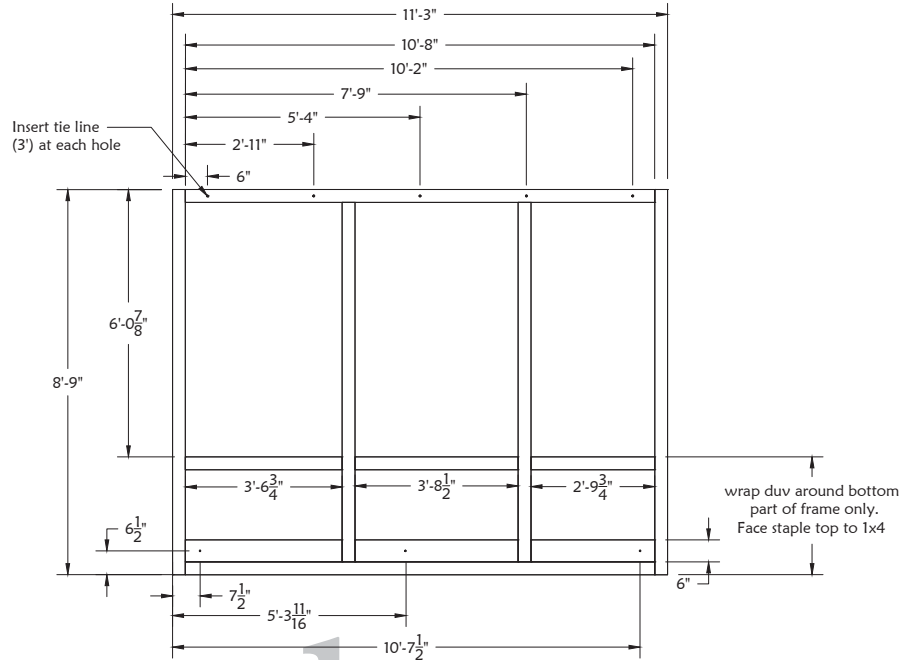
Assemble unit from CNC 1/2 MDF and luan. Glue and pin nail.

2 False Pro Columns
M13



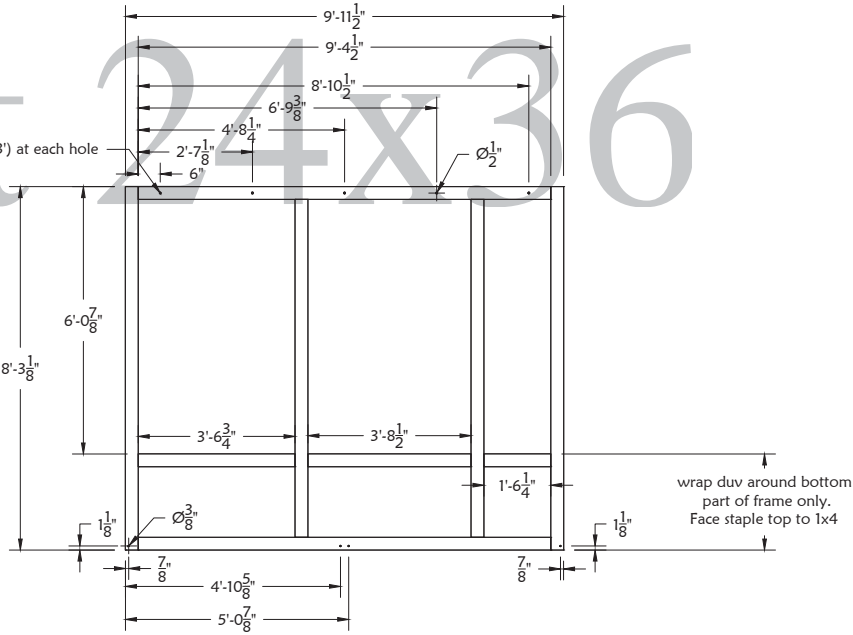
Assemble unit from CNC 1/2 MDF and 1x4 frame.

6 False Pro Header
M13



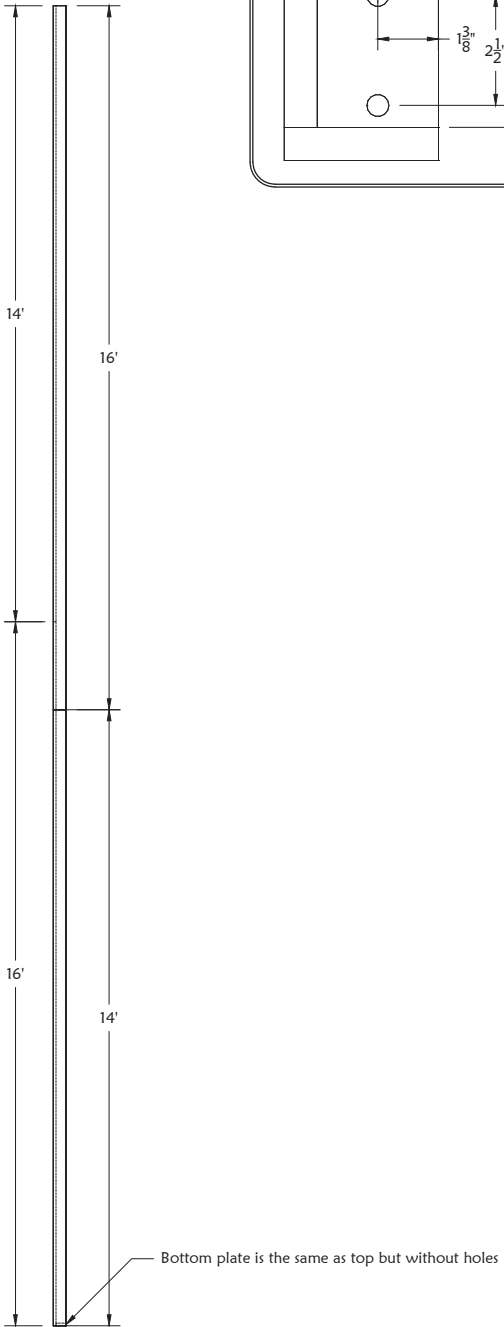
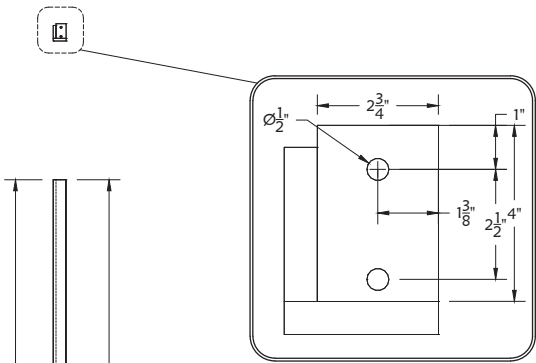
Build 2 from 1x4 and 3/4 ply. Wide crown both sides; add cornerblocks to corners.

3 Masking Frame
M13



Build 1 from 1x4 . Wide crown both sides; add cornerblocks to corners.

7 Center Masking Frame
M13



Bottom plate is the same as top but without holes

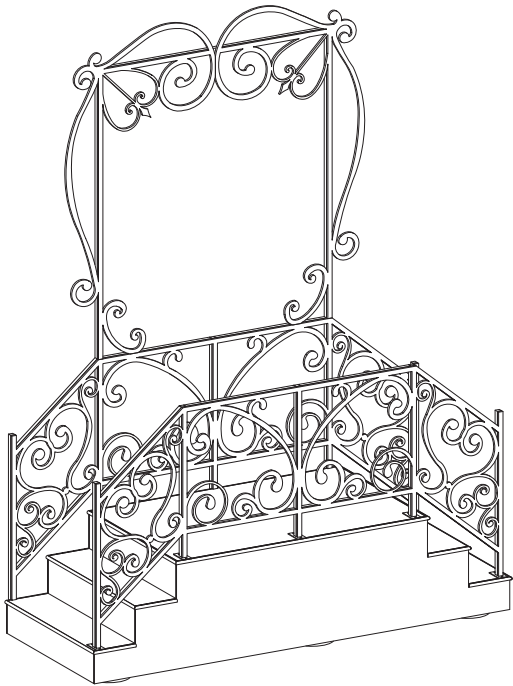
Build 1 as drawn; 1 R&R from 1x4 and 3/4 ply. Screws only.

4 Hogstrough
M13



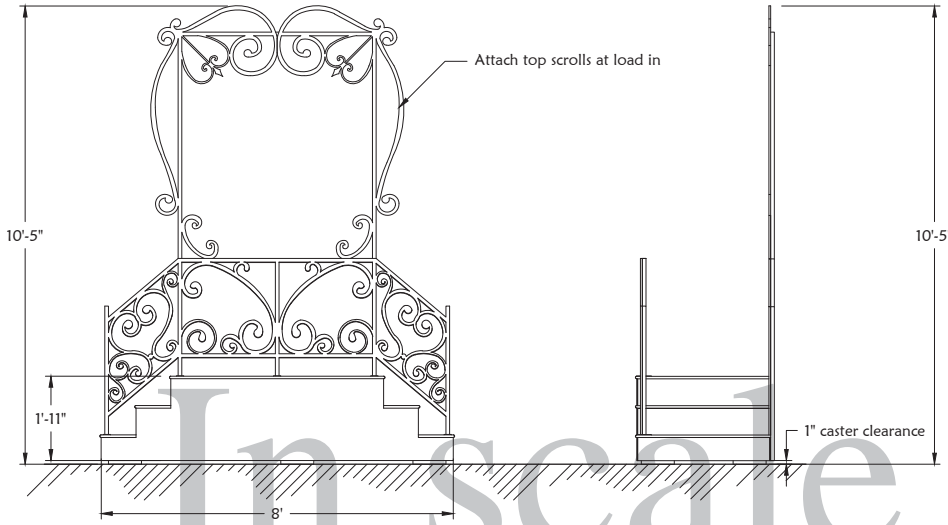
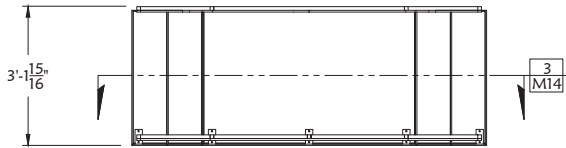
Music Man

Plate Name: False Pro			Plate:
Director: JVellenga	Tech Director: BStark	Date: 10/25/13 Rev: ..	M13
Scenic Designer: KVoecks	Drawn by: BStark	Scale: As Noted	



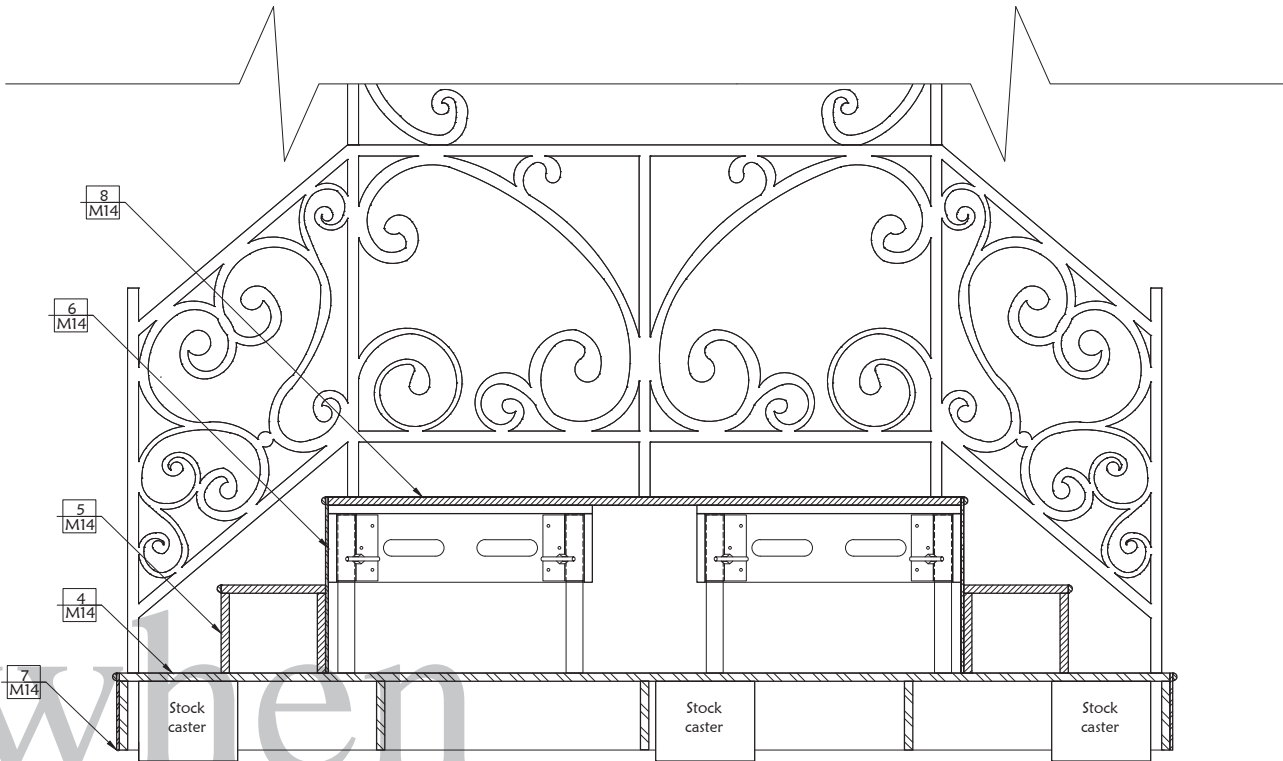
Assemble from various materials.

1 Footbridge ISO
M14

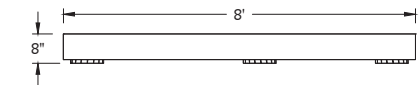
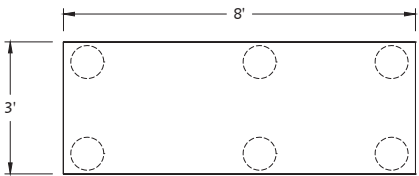


Attach luan facing to each side with screws.
Flush route ro steps/facing.

2 Footbridge Ortho
M14 1/2"=1'-0"

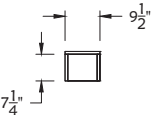
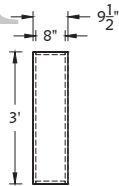


3 Section
M14 1-1/2"=1'-0"



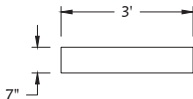
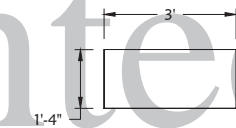
Caster stock 3x8 with stock casters. Attach with screws thru baseplate.

4 Base Platform
M14 1/2"=1'-0"



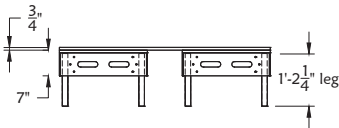
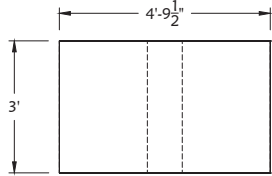
Build 2 from 3/4 plywood. Glue and narrow crown.

5 Step Unit
M14 1/2"=1'-0"



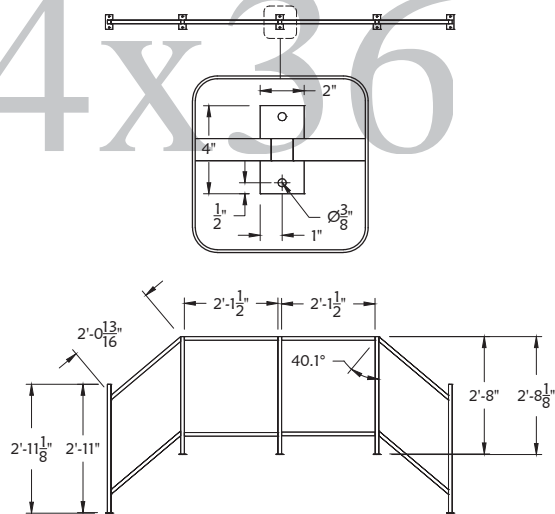
Build 2 from 1/4 luan.
Attach with screws to step and stock platforms

7 First Step Facing
M14 1/2"=1'-0"

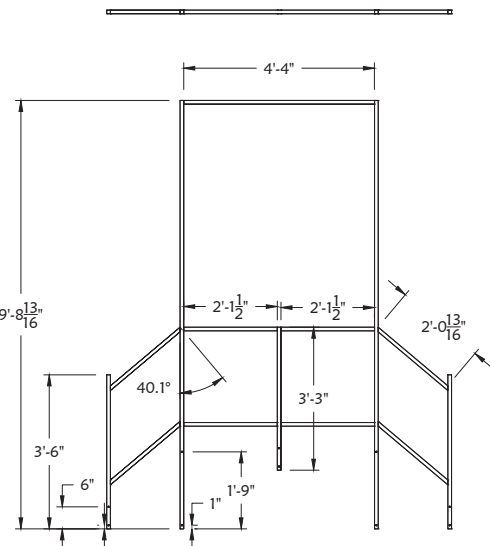


Pull 2- 2x3 stock decks.
Legs are 1.5x1.5x16g tube. Pull/shim to height.
Second skin is 3/4 plywood attached with narrow crowns only.

8 Top Step
M14 1/2"=1'-0"



9 Front Railing Steel
M14 1/2"=1'-0"



10 Rear Rail Steel
M14 1/2"=1'-0"



Music Man

Plate Name: Footbridge			Plate:
Director: JVellenga	Tech Director: BStark	Date: 10/25/12 Rev: ..	M14
Scenic Designer: KVoecks	Drawn by: BStark	Scale: As Noted	