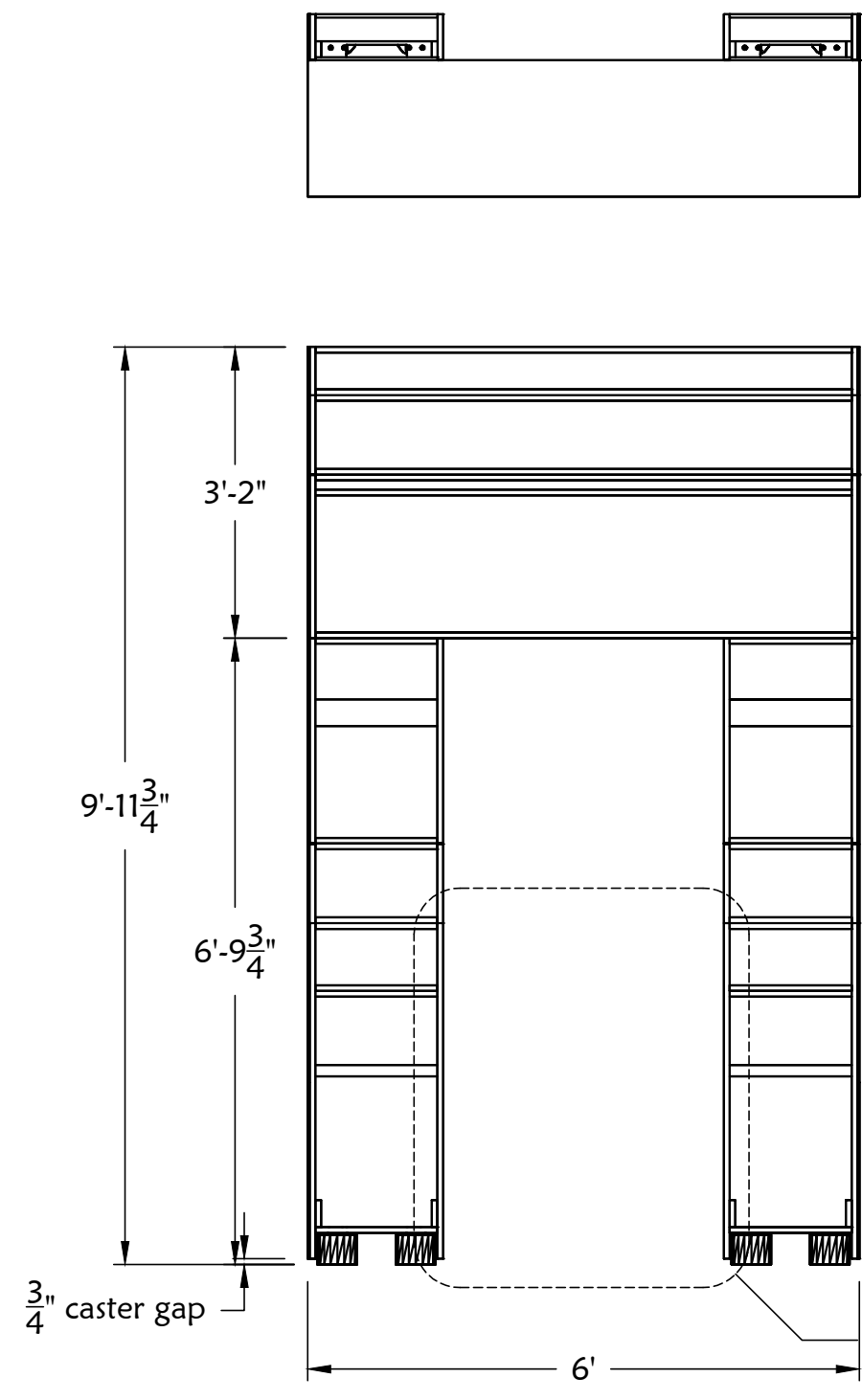
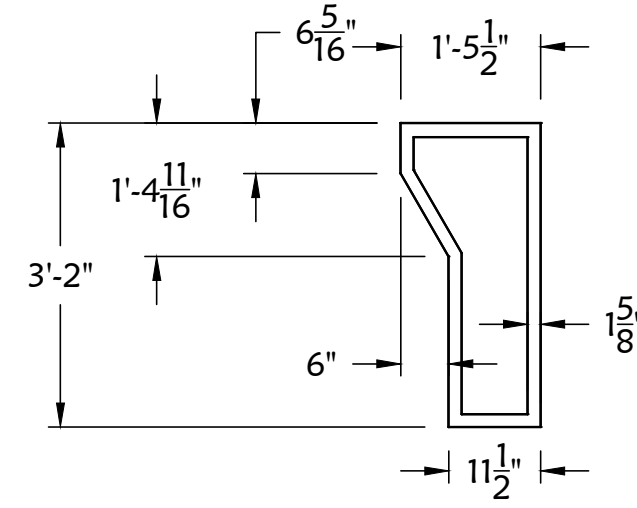
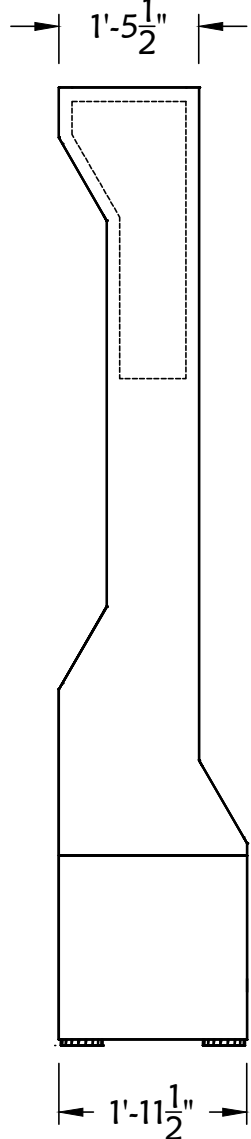


1 General Frame Iso



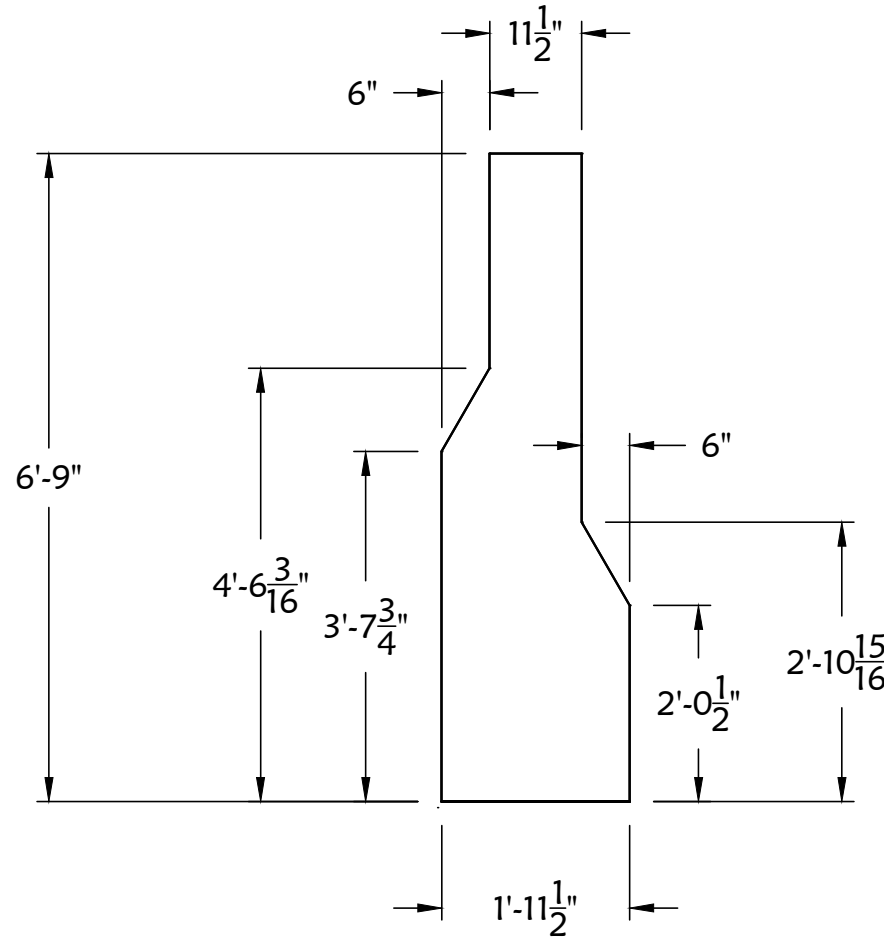
Build 5 as drawn from various materials.

2 Frame Ortho 1/2"=1'-0"



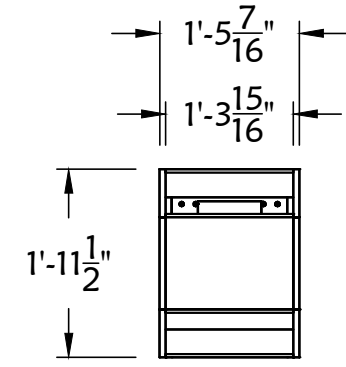
Build 1 template from 3/4" material.
Flush route 10 copies using 1/2" flush trim bit from 3/4" BC ply.

3 Upper Frame Template 1/2"=1'-0"



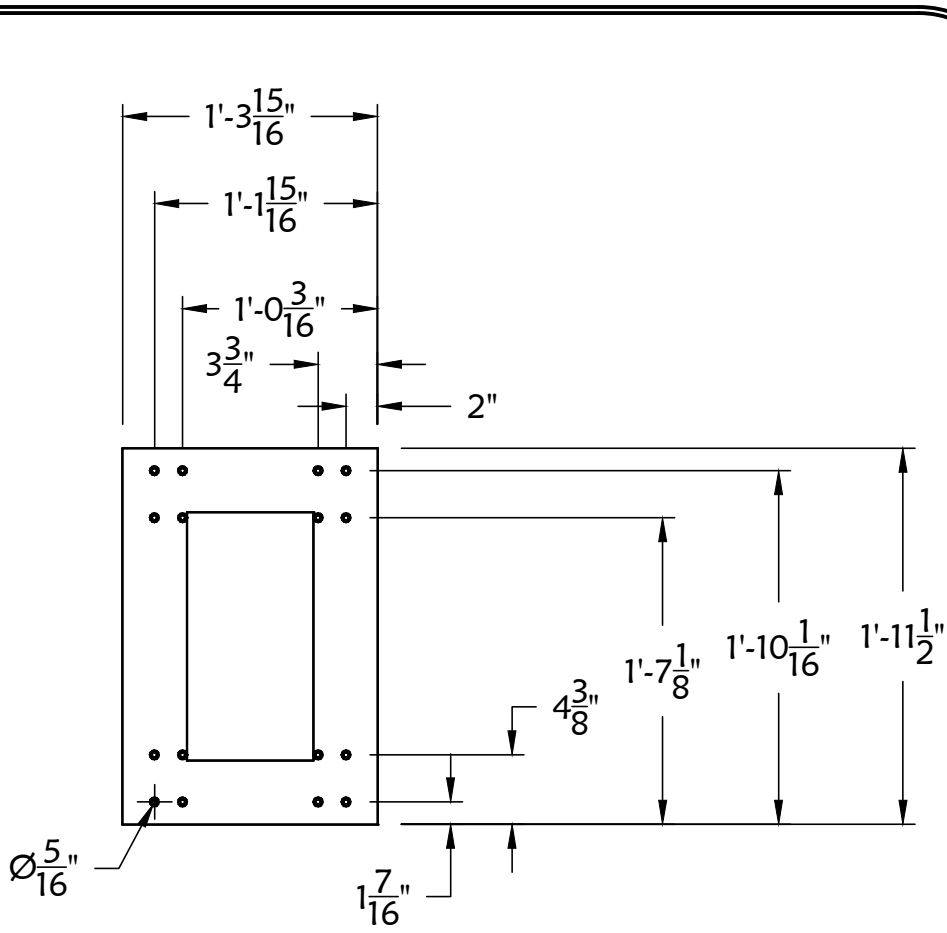
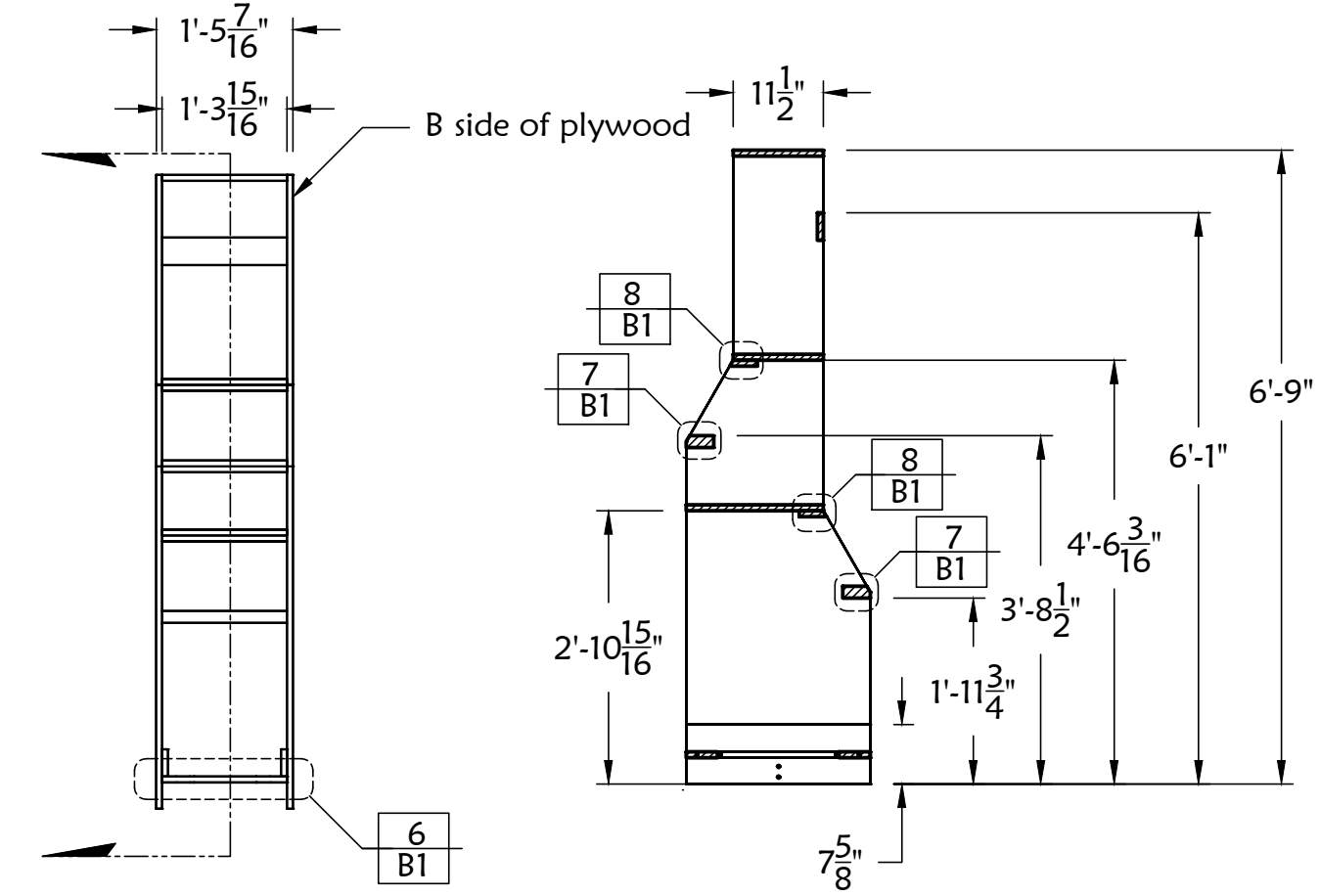
Build 1 template from 3/4" material.
Flush route 10 copies as drawn, 10 R&R using 1/2" flush trim bit from 3/4" BC ply.

4 Lower Frame Template 1/2"=1'-0"



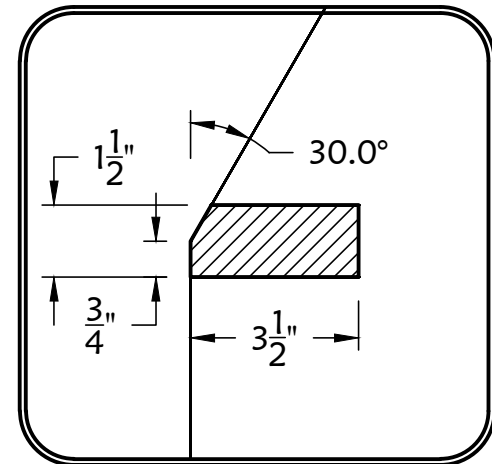
Assemble 5 as drawn, 5 R&R from template routed BC ply, 1x4 and 2x4.
Glue and screw. Fill and sand for paint finish.

5 Side Frames Assembled 1/2"=1'-0"

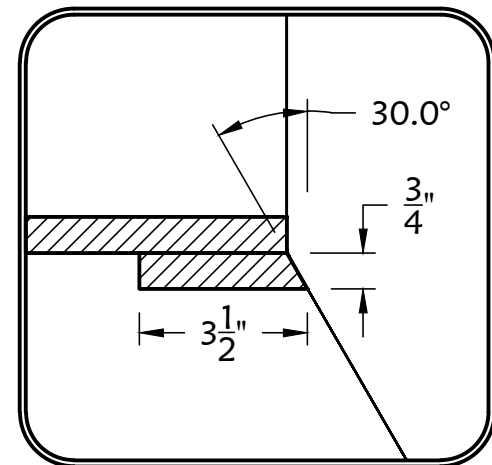


Build 10 from 3/4" plywood. Drill and countersink for 1/4" FHSB to attach stock casters (Colson model E2.3856.465) with nylocks.

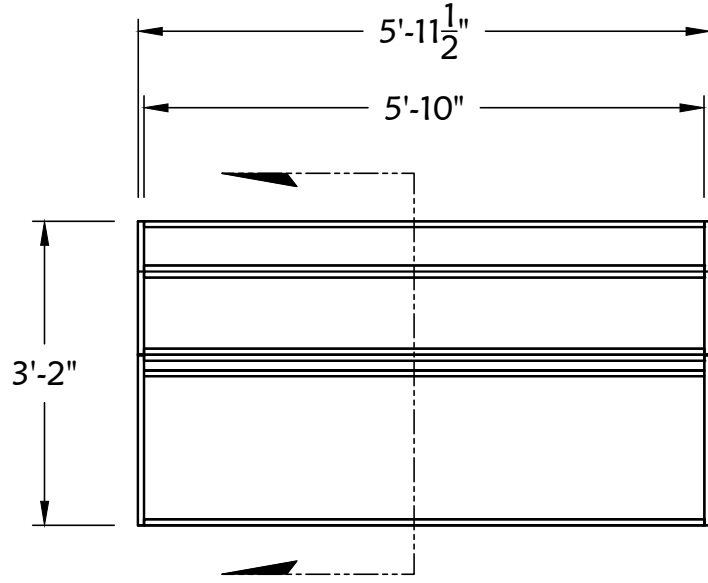
6 Caster plate 1/2"=1'-0"



7 Side Frame Detail 3"=1'-0"

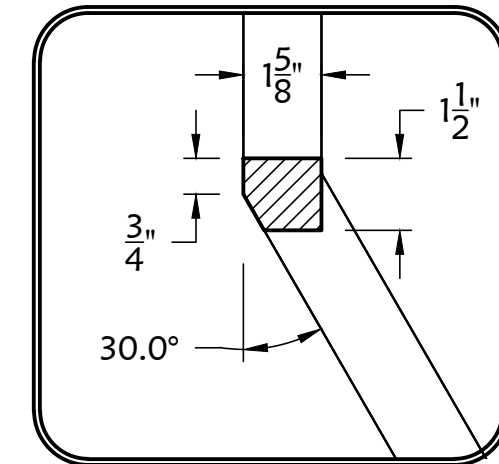
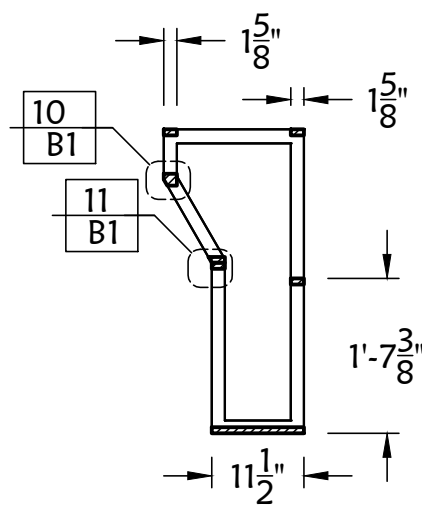


8 Side Frame Detail 3"=1'-0"

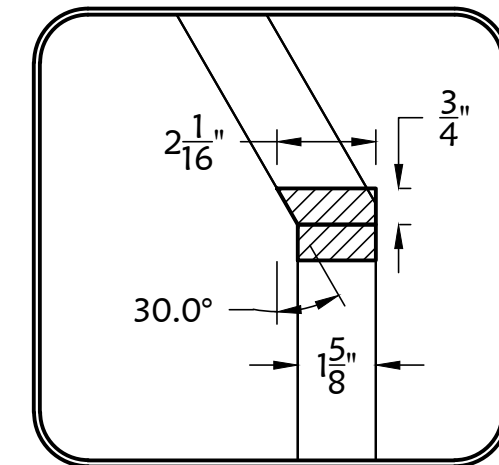


Build 4 from template BC ply, 1x4, and 2x4. Glue and screw.

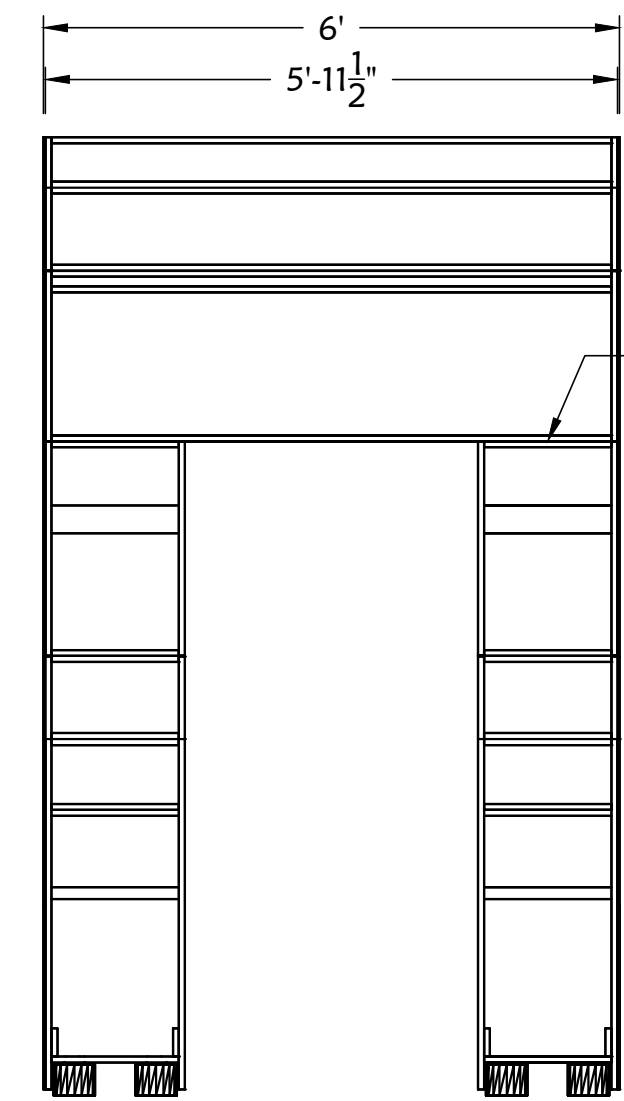
9 Upper Frame Assembly 1/2"=1'-0"



10 Upper Frame Detail 3"=1'-0"

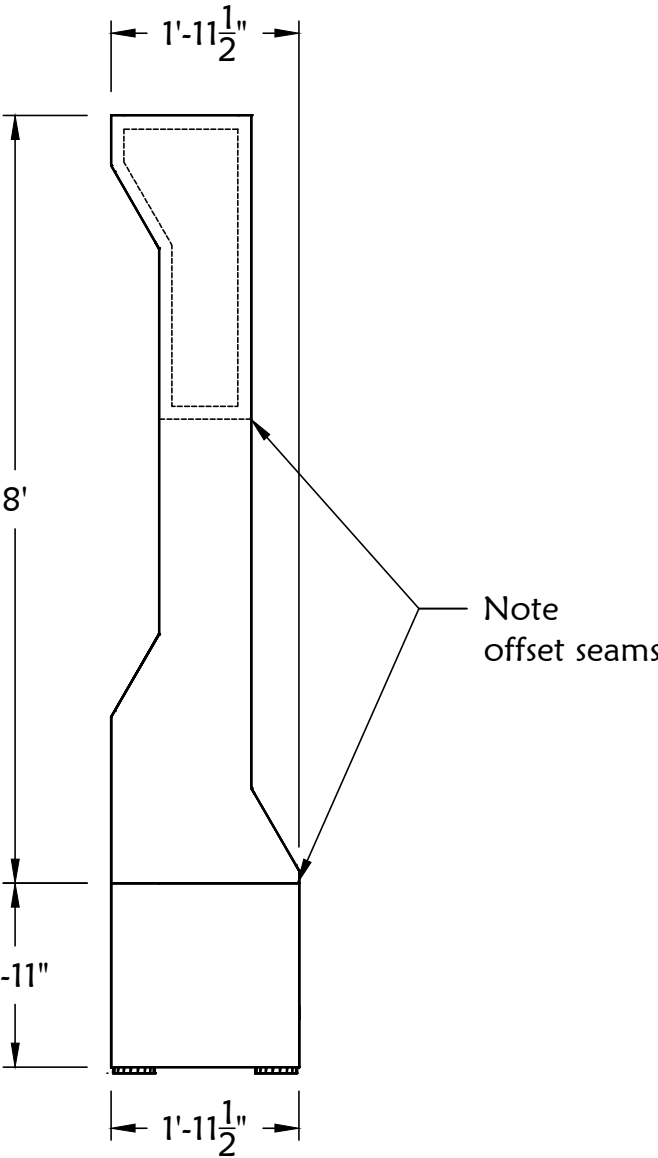


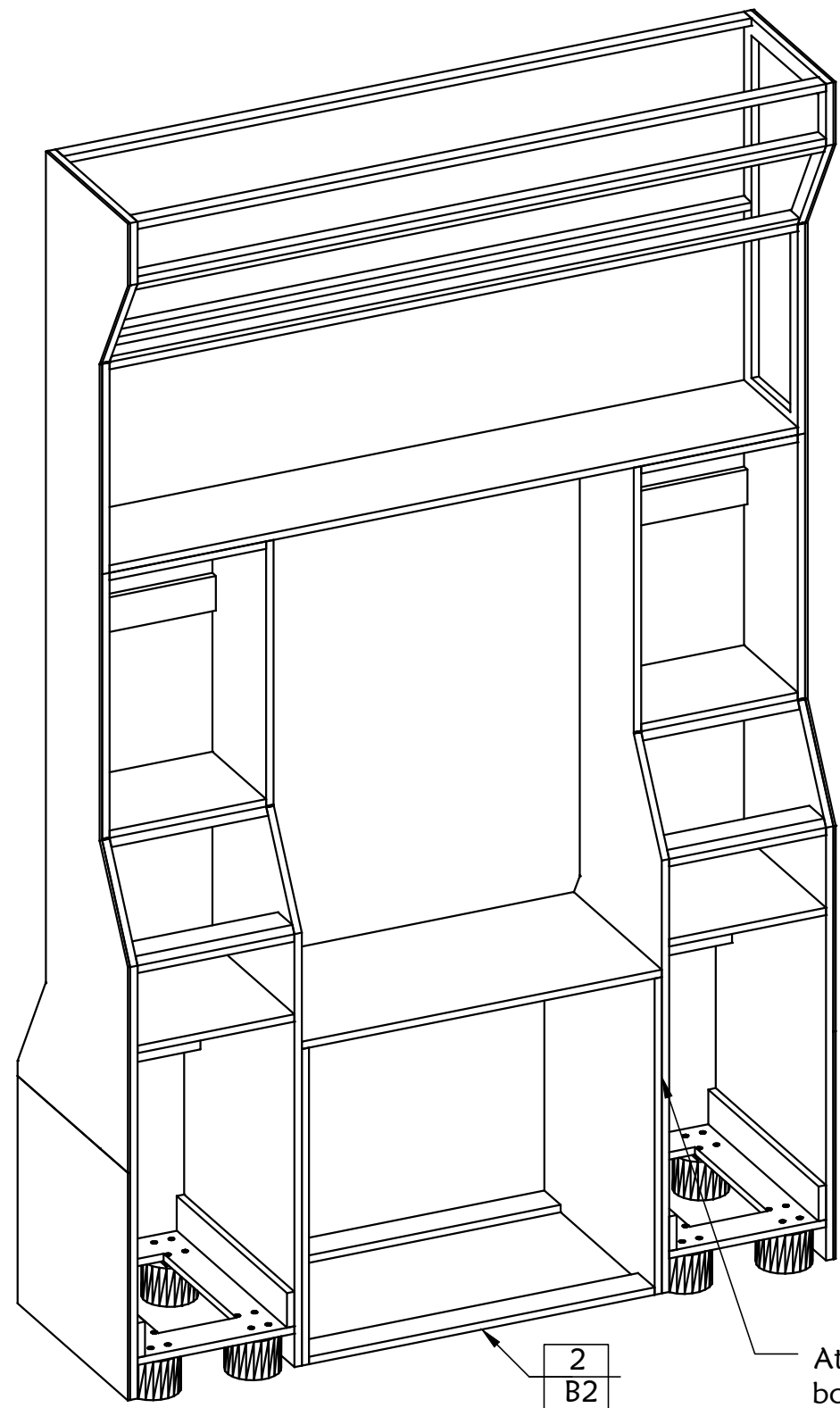
11 Upper Frame Detail 3"=1'-0"



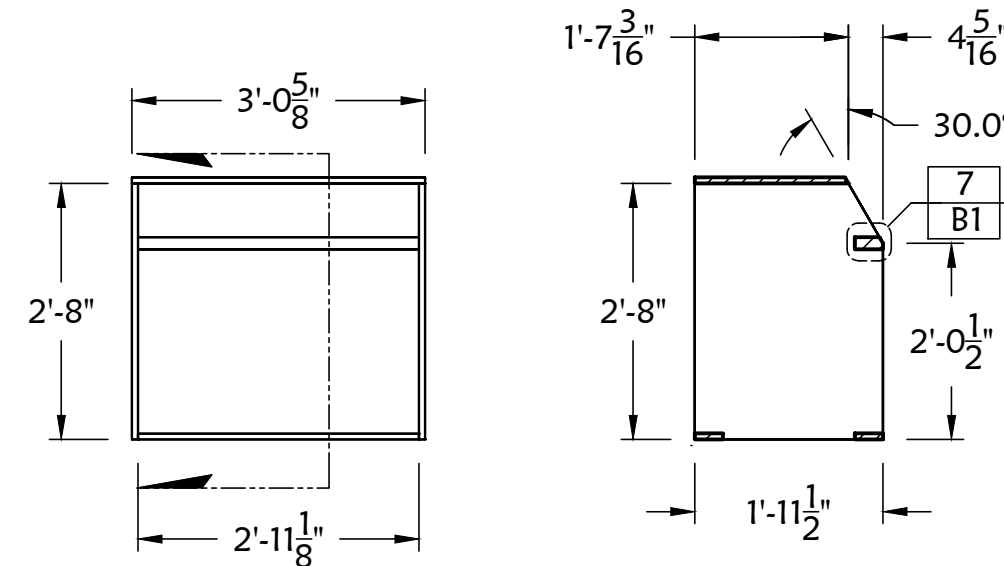
Bolt Upper frame to Lower as shown with 1/4" hex bolts and nylocks.
Skin sides with 1/2" luan. Glue and brad.
Typical for all frames.

12 Side Skins 1/2"=1'-0"



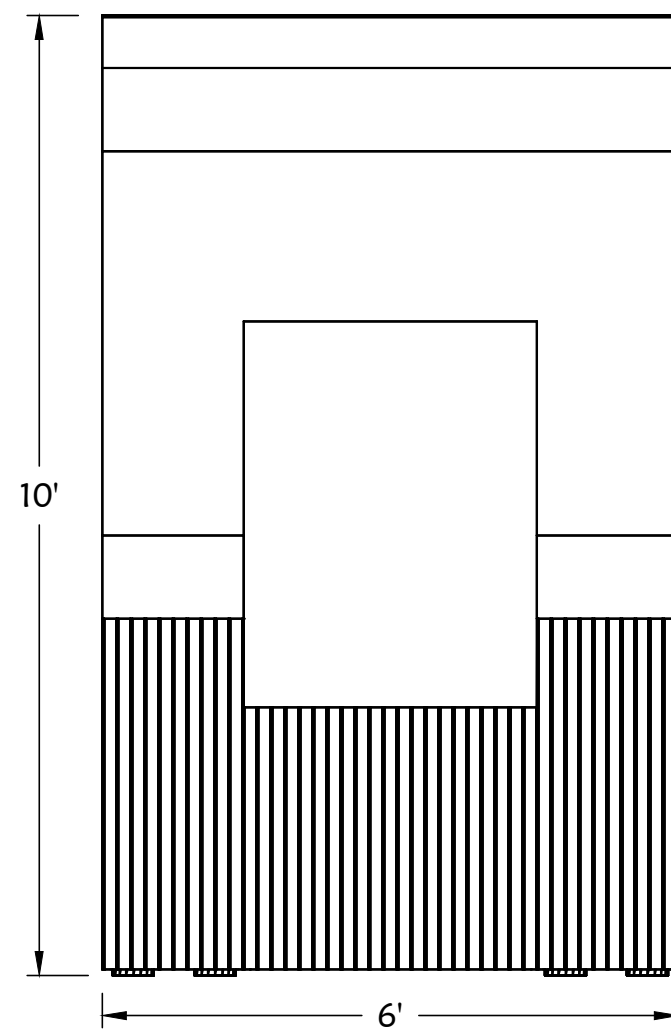


1 Window Frame (SLB and SR B) Iso

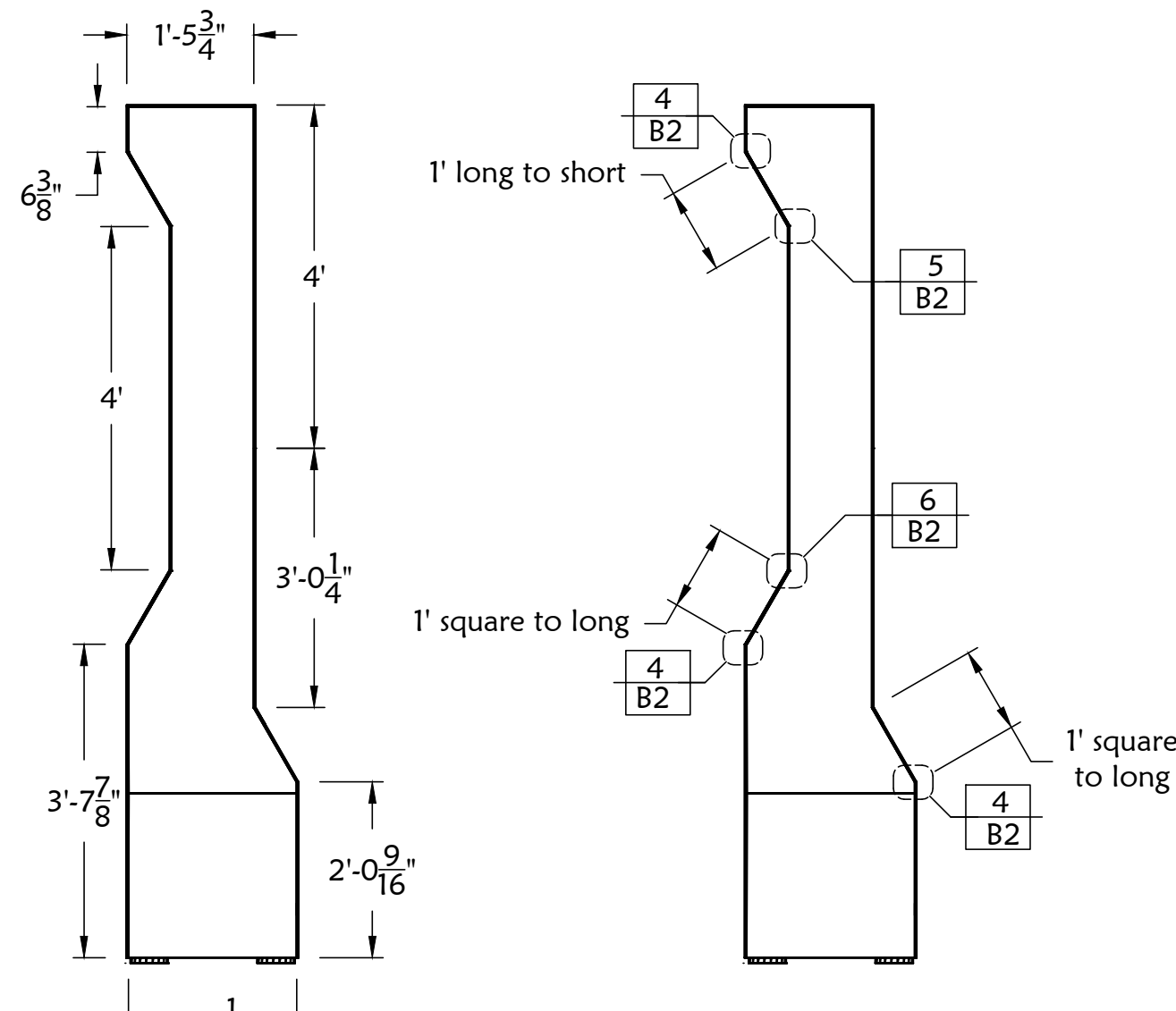


Build 2 as drawn from $\frac{3}{4}$ ply, 1x4 and 2x4. Glue and screw. Fill and sand.

2 Window Box $\frac{1}{2}$ "=1'-0"

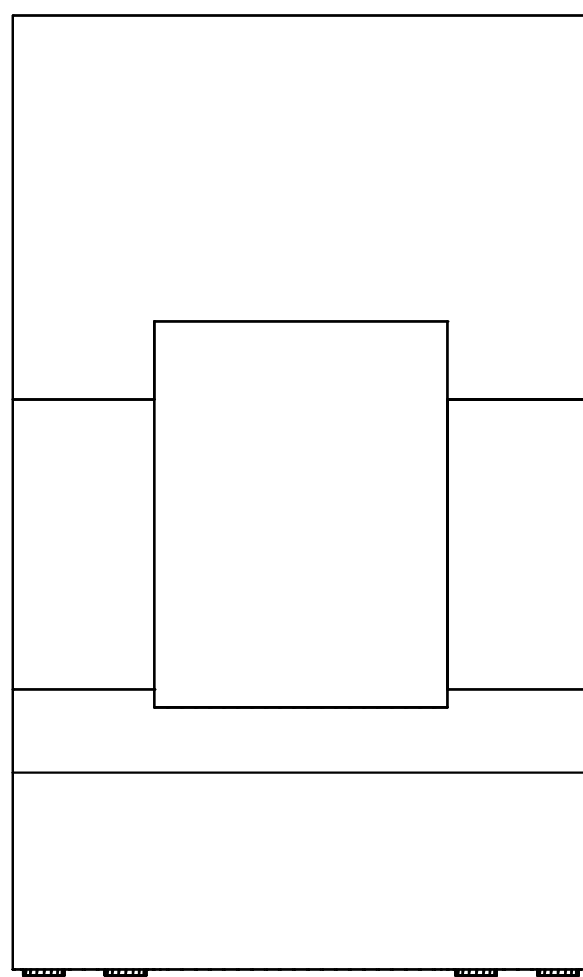


FRONT



SIDE

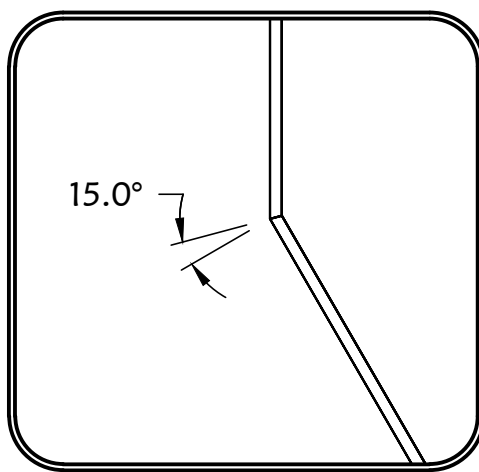
ADD'L SIDE VIEW



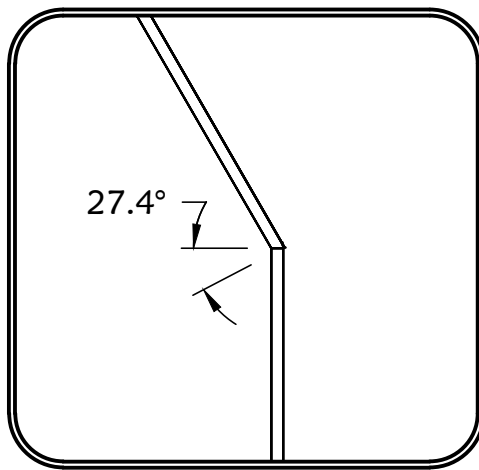
REAR

Skin 2 as shown with $\frac{1}{4}$ luan and $\frac{1}{4}$ beadboard.
Attach with glue and narrow crown.

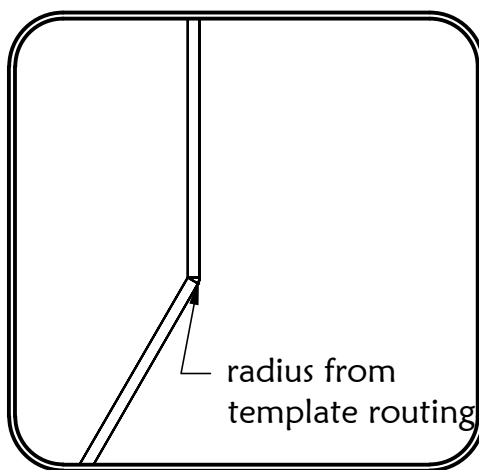
3 Skin Ortho $\frac{1}{2}$ "=1'-0"



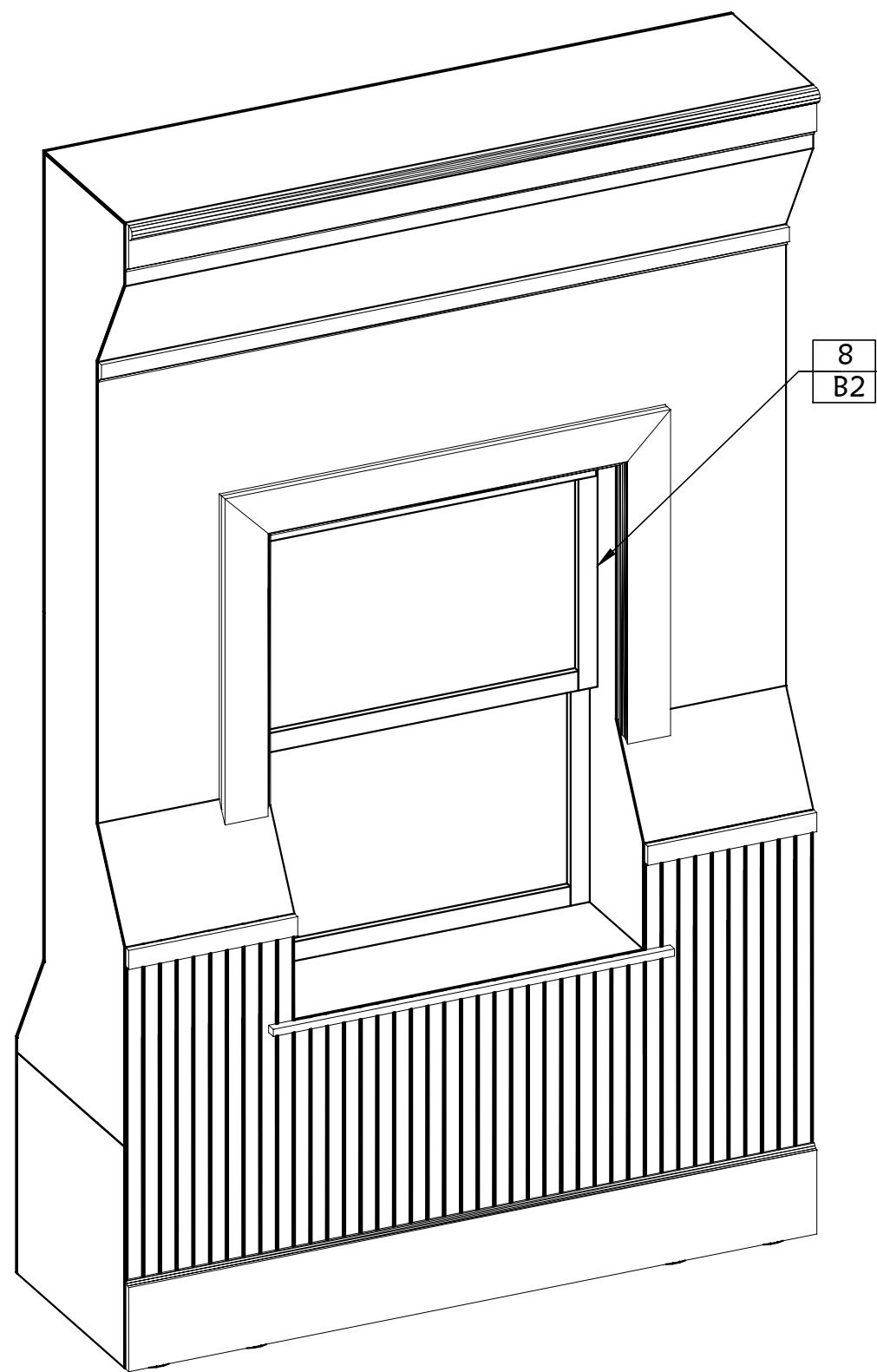
4 Skin Detail 3"=1'-0"



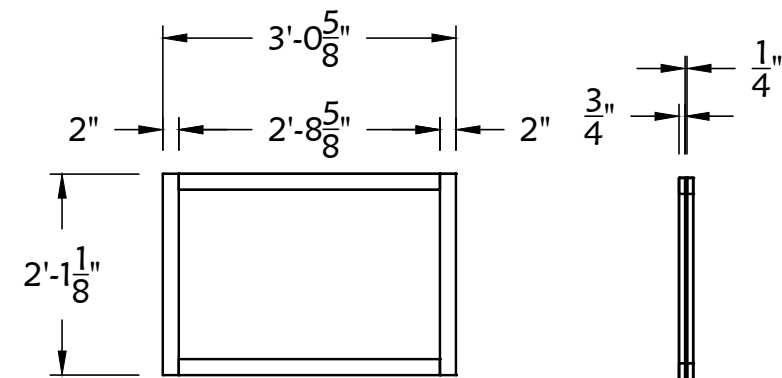
5 Skin Detail 3"=1'-0"



6 Skin Detail 3"=1'-0"



7 Front Finished Iso

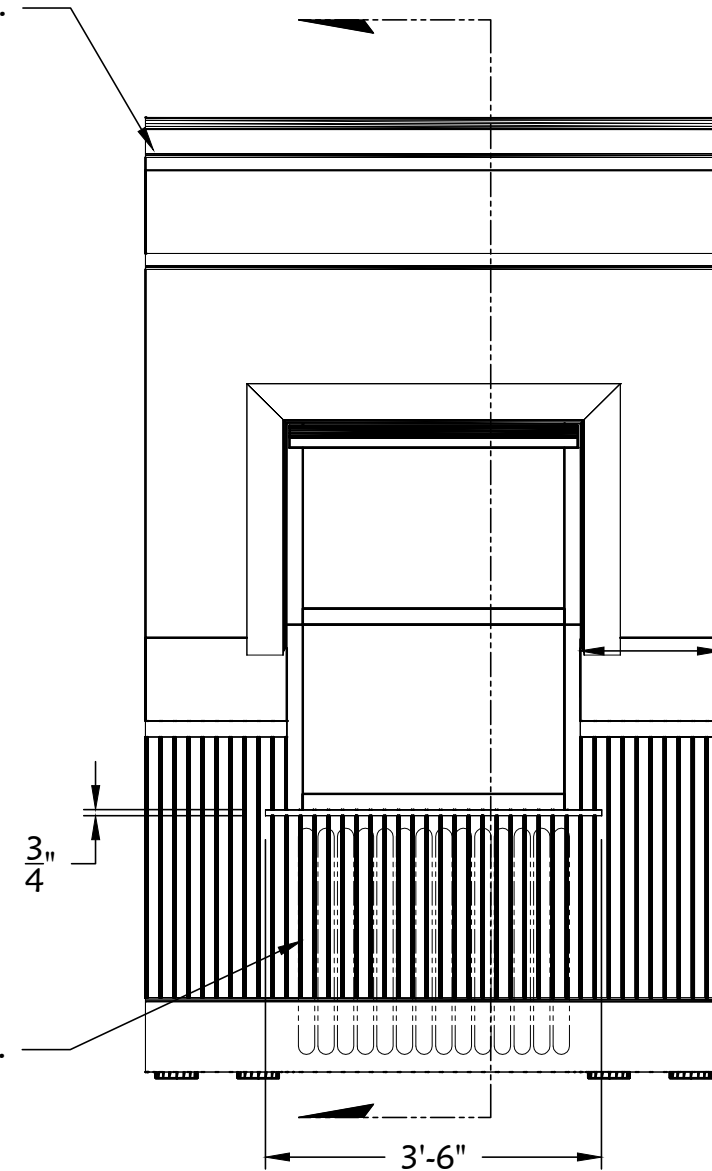


Build 4 as drawn from ripped 1x and $\frac{1}{4}$ " plexi. Attach wood frames together with pocket screws. Sandwich plexi between wood frames with screw.

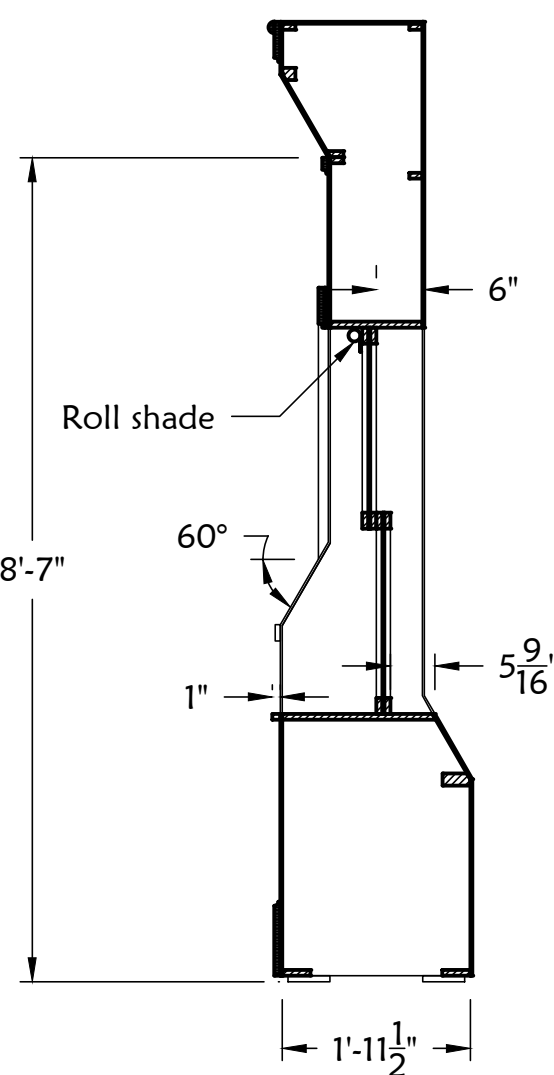
Discuss with TD whether textured plexi or applied texture film.

8 Window Frame $\frac{1}{2}$ "=1'-0"

All trim to match existing units.

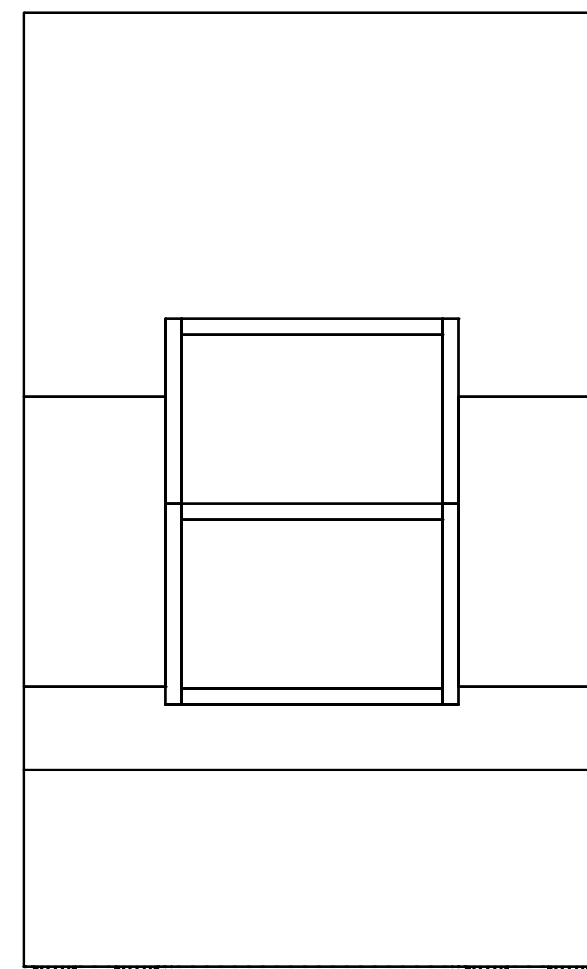


FRONT

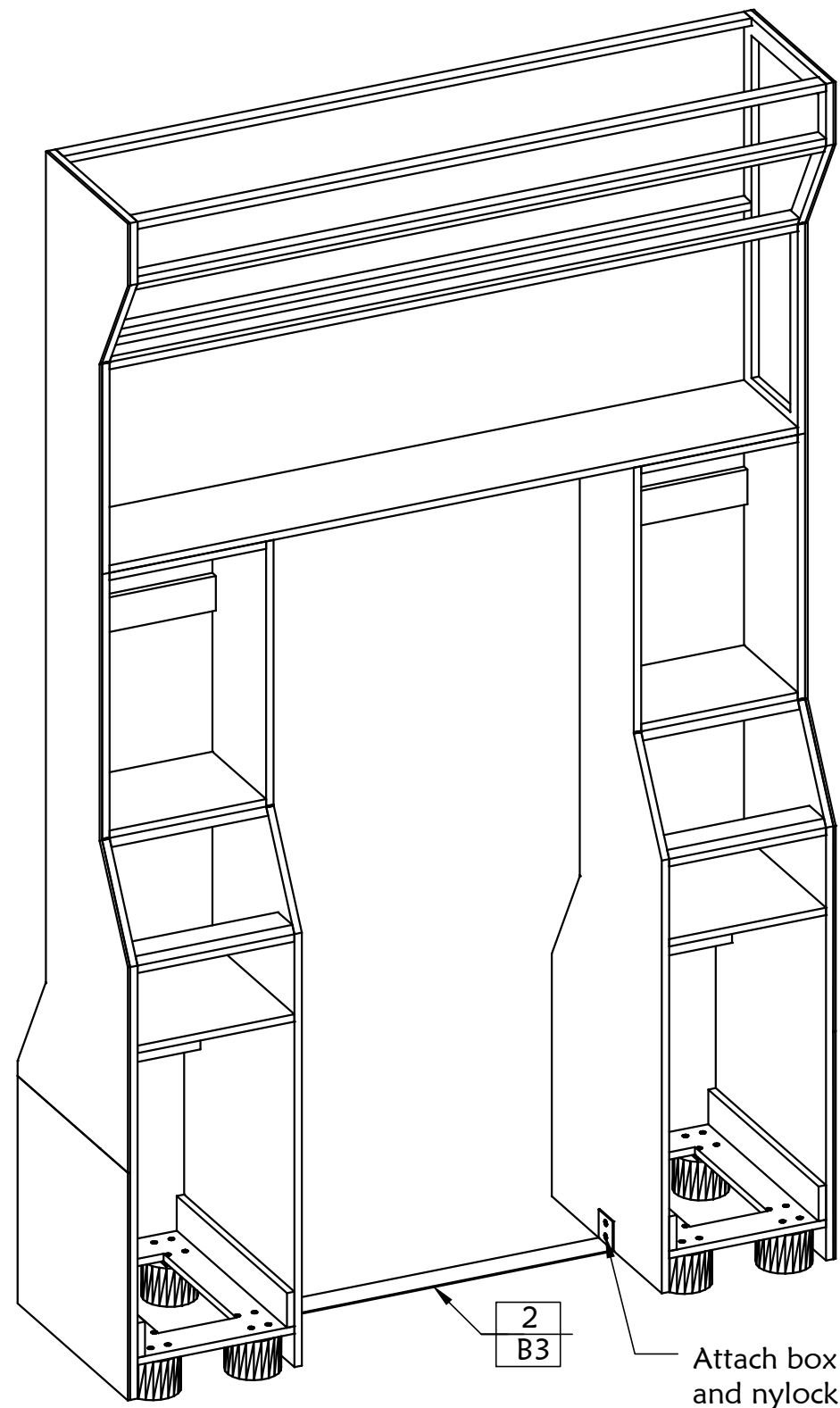


Attach trim/finishing details with glue and brads.

9 Finishing Ortho $\frac{1}{2}$ "=1'-0"

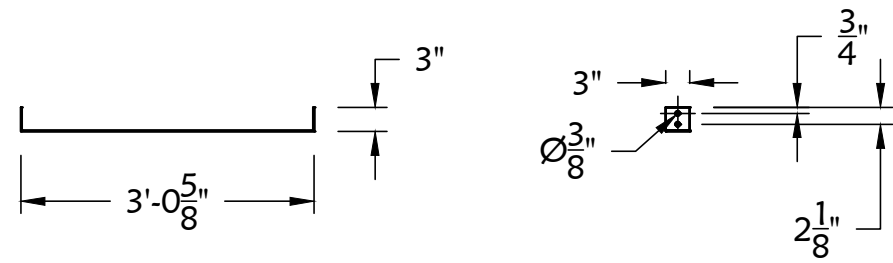


REAR



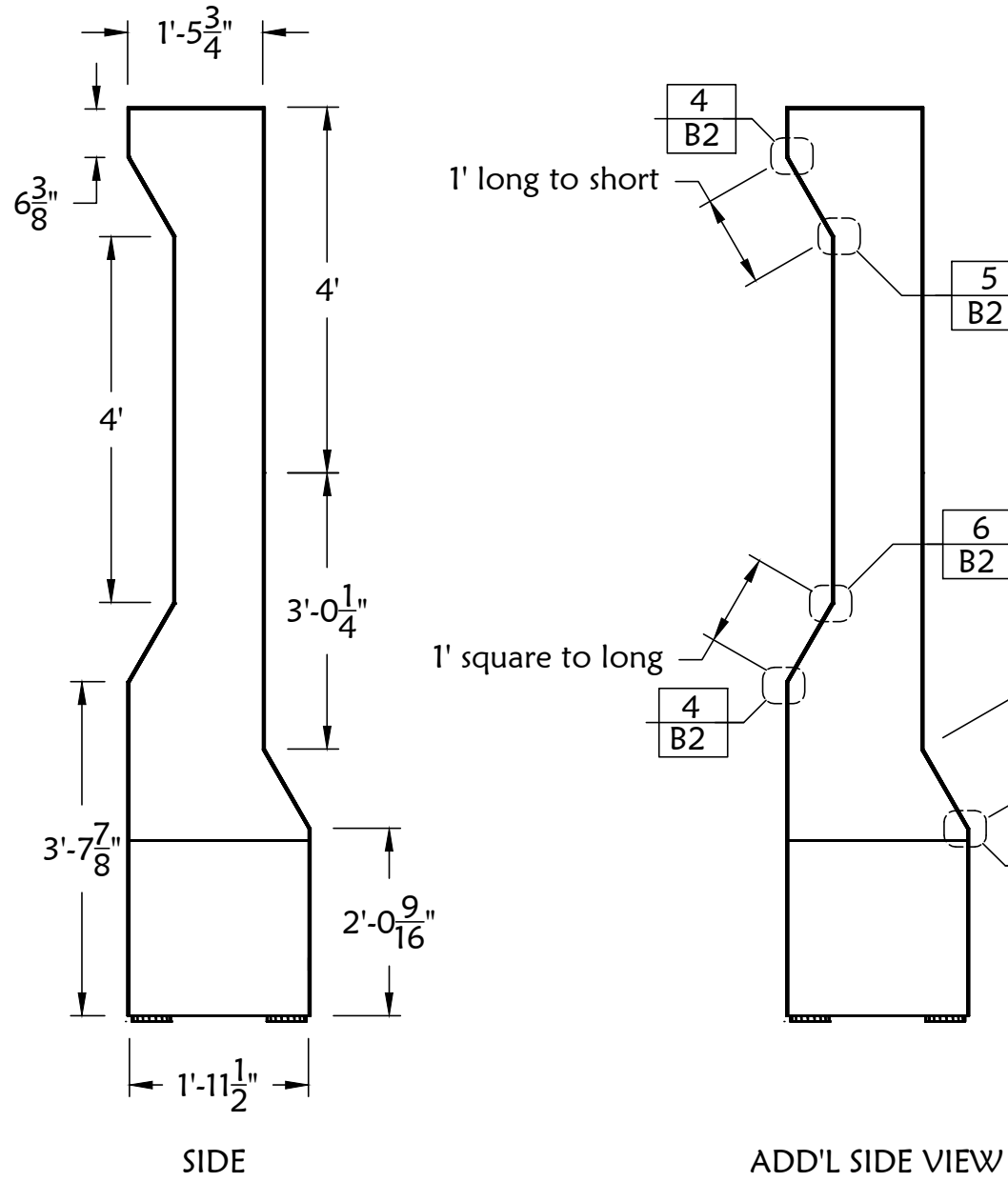
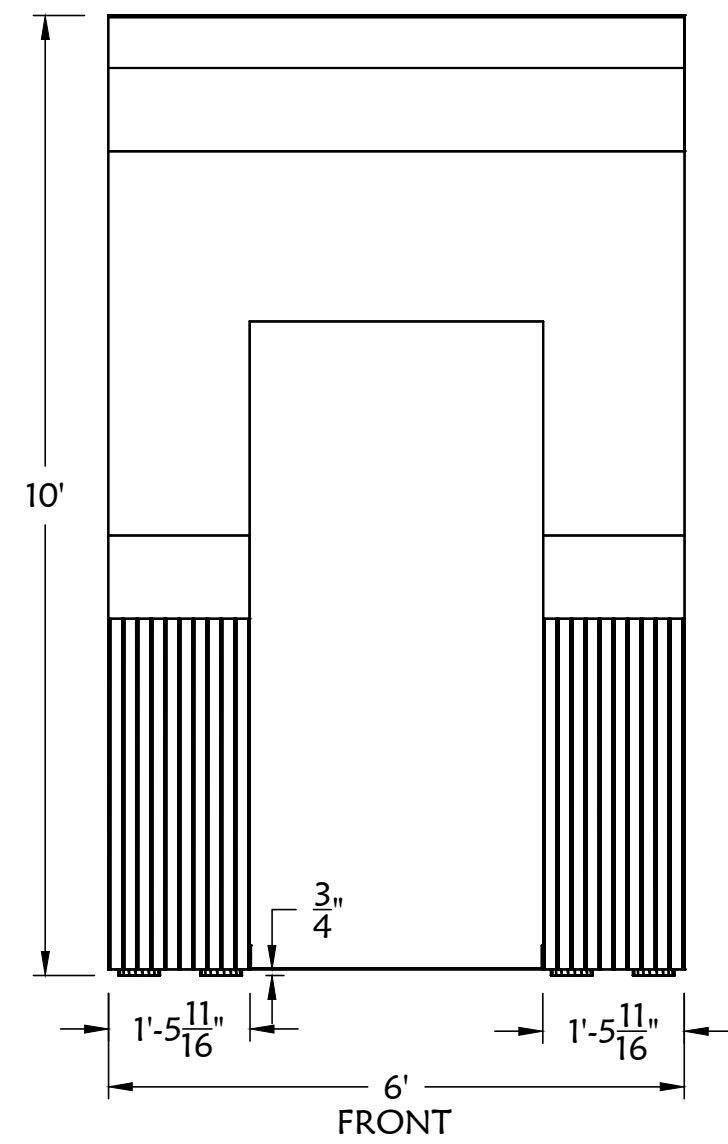
1
B3
Curtain Frame-SLC

Attach box with $\frac{1}{4}$ FHSB and nylocks.



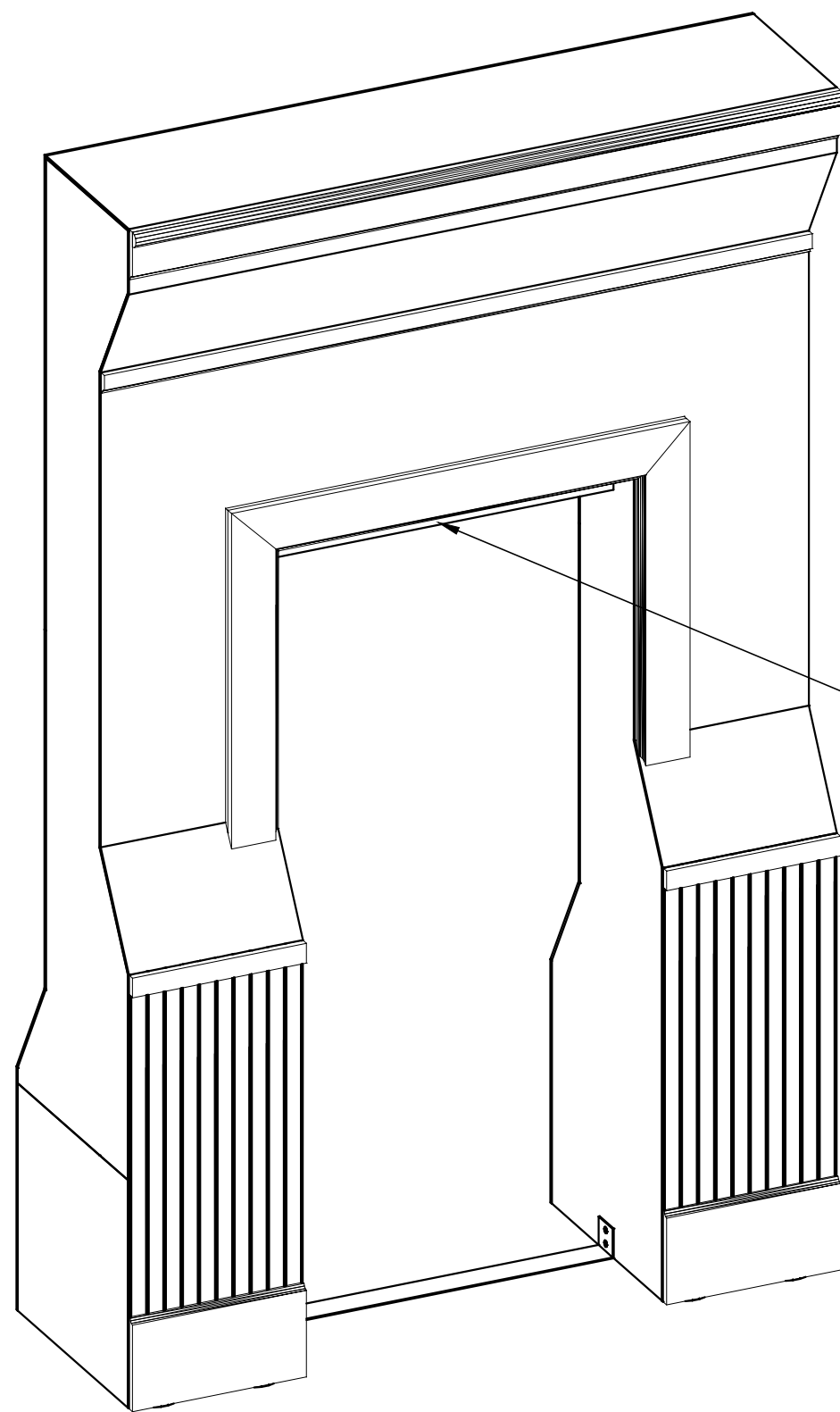
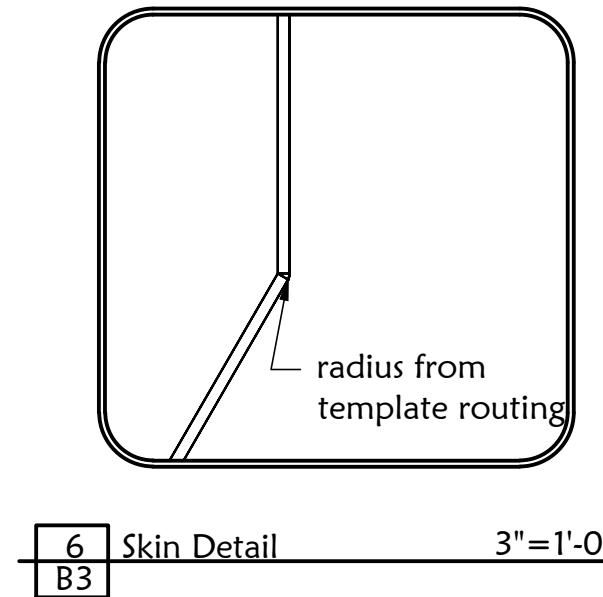
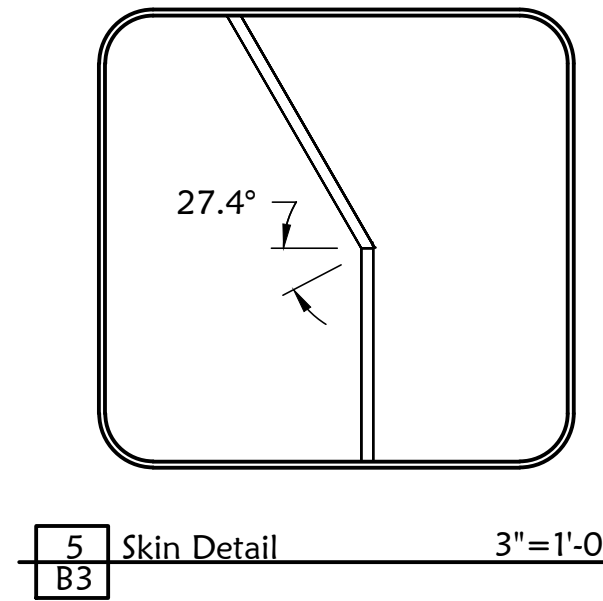
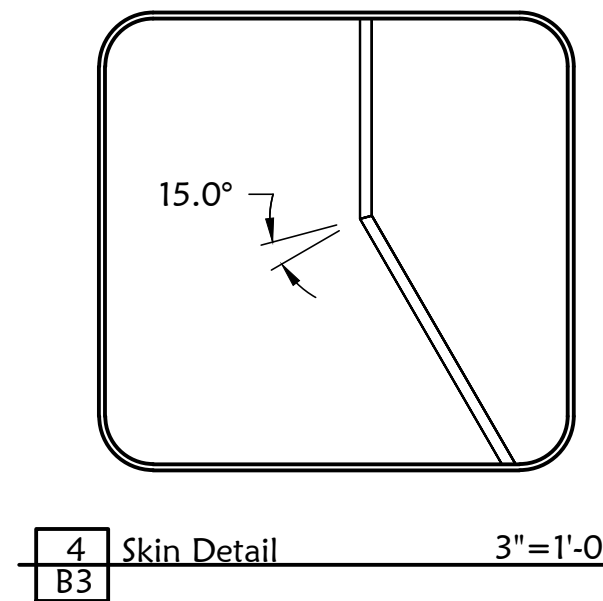
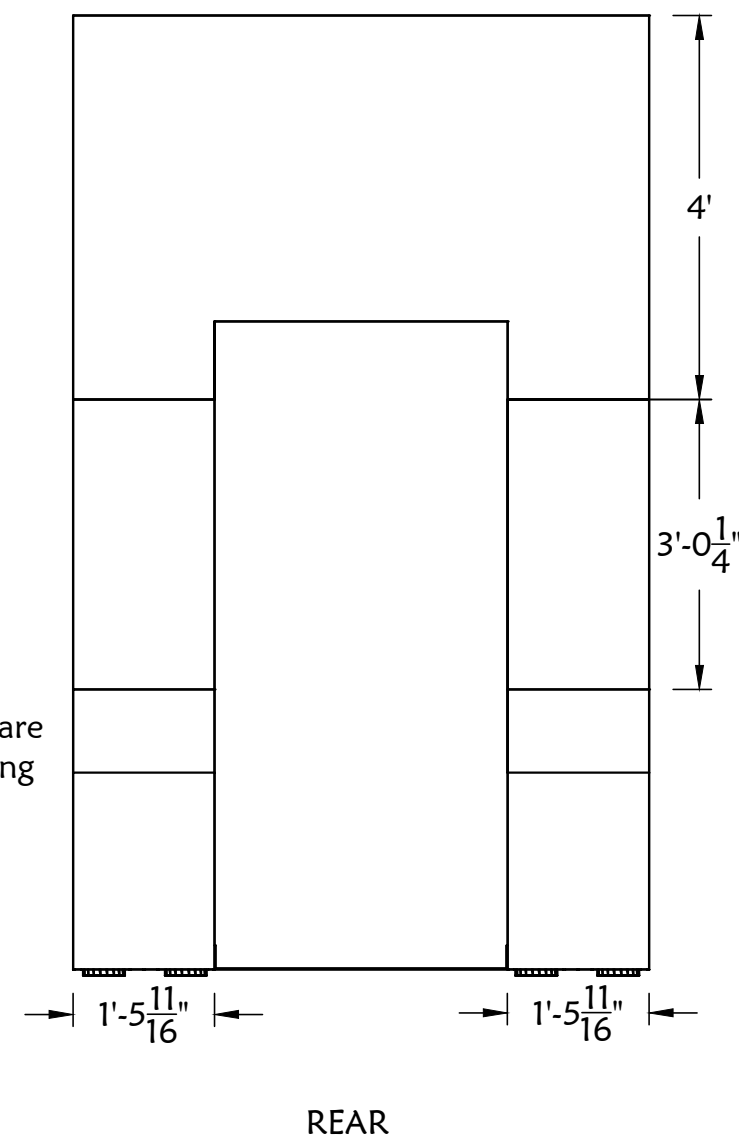
Build 3 from $\frac{1}{8} \times 3$ " flat bar steel. Countersink holes for $\frac{1}{4}$ FHSB. For use on SLC, SRA, and SRC

2
B3
Sill $\frac{1}{2}"=1'-0"$



Skin 2 as shown with $\frac{1}{4}$ luan and $\frac{1}{4}$ beadboard. Attach with glue and narrow crown.

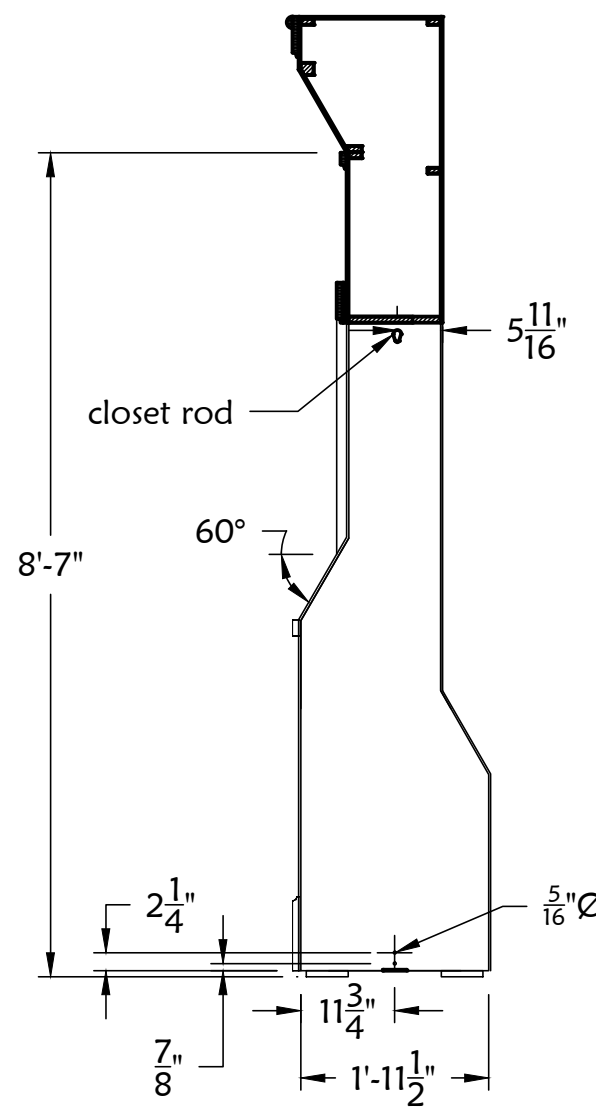
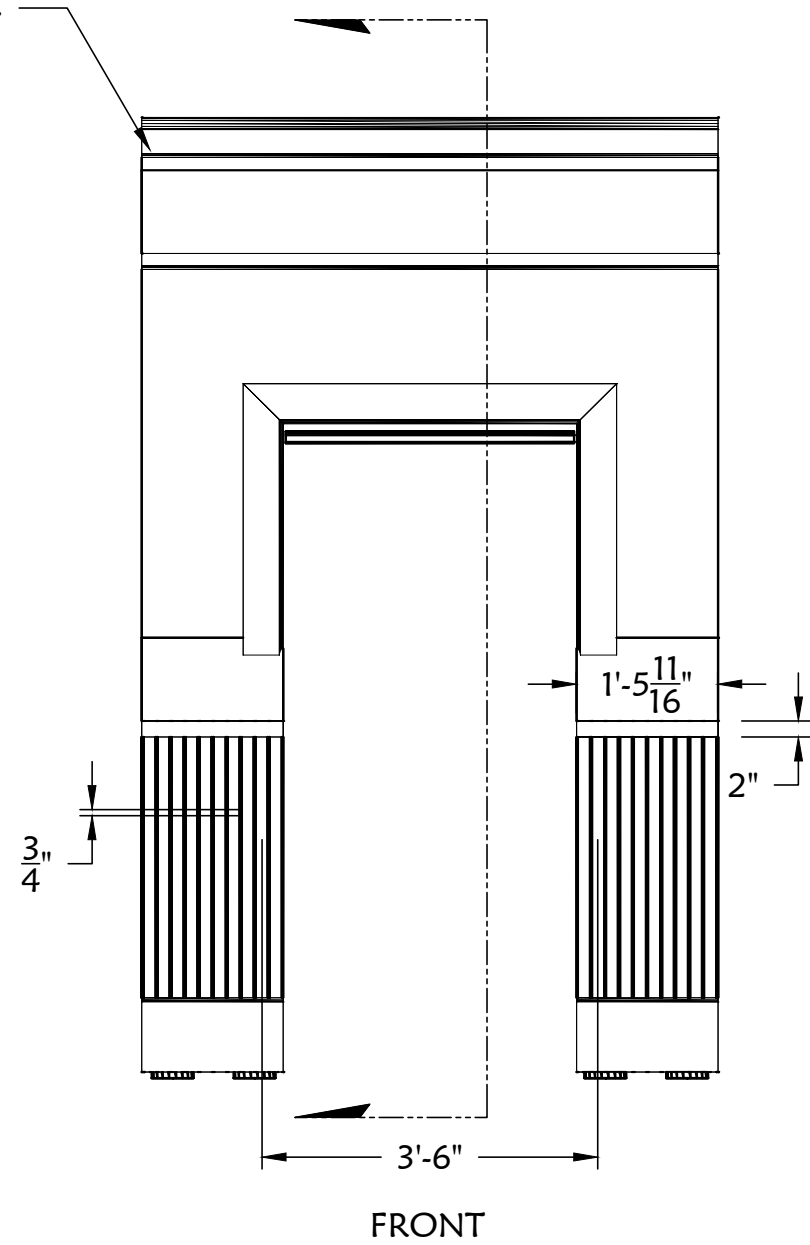
3
B3
Skin Ortho $\frac{1}{2}"=1'-0"$



7
B3
Front Finished SLC

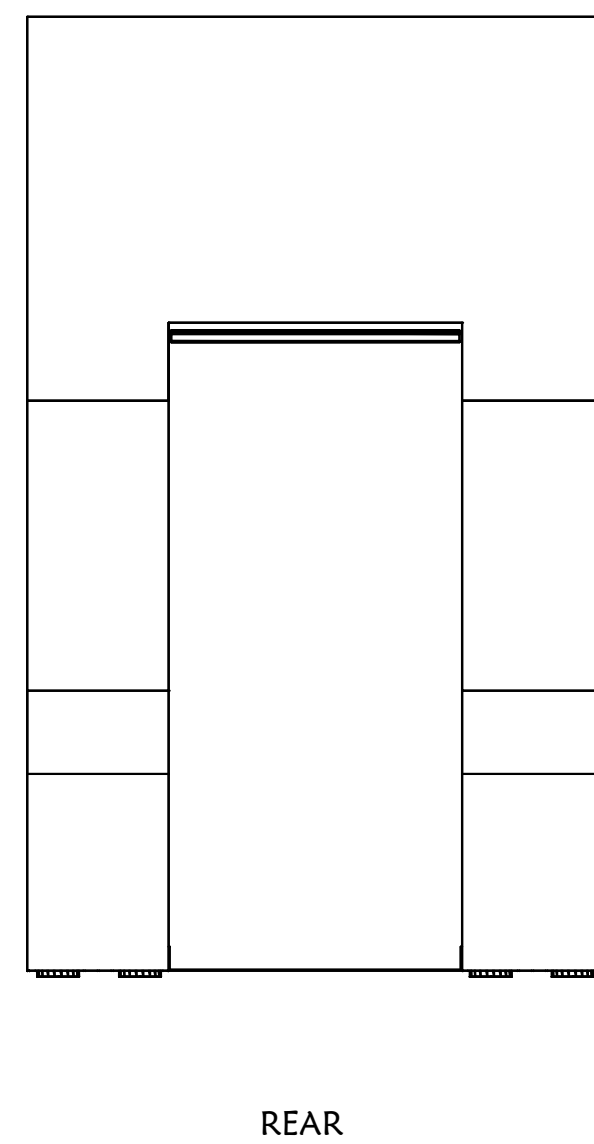
Purchased closet rod for curtains

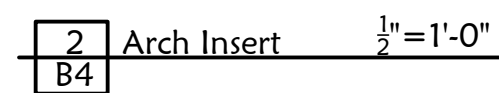
All trim to match existing units.



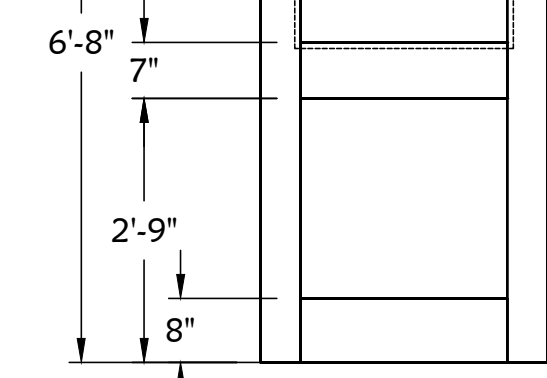
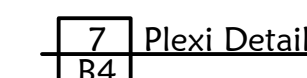
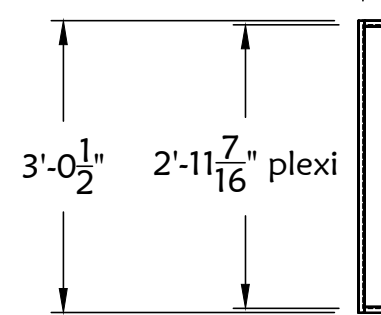
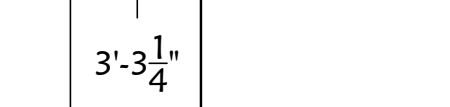
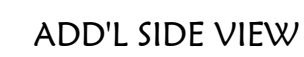
Attach trim/finishing details with glue and brads.

8
B3
Finishing Ortho $\frac{1}{2}"=1'-0"$





3	Upper Frame	$\frac{1}{2}"=1'-0"$
B4		



4	Skin Ortho	$\frac{1}{2}'' = 1'-0''$
B4		

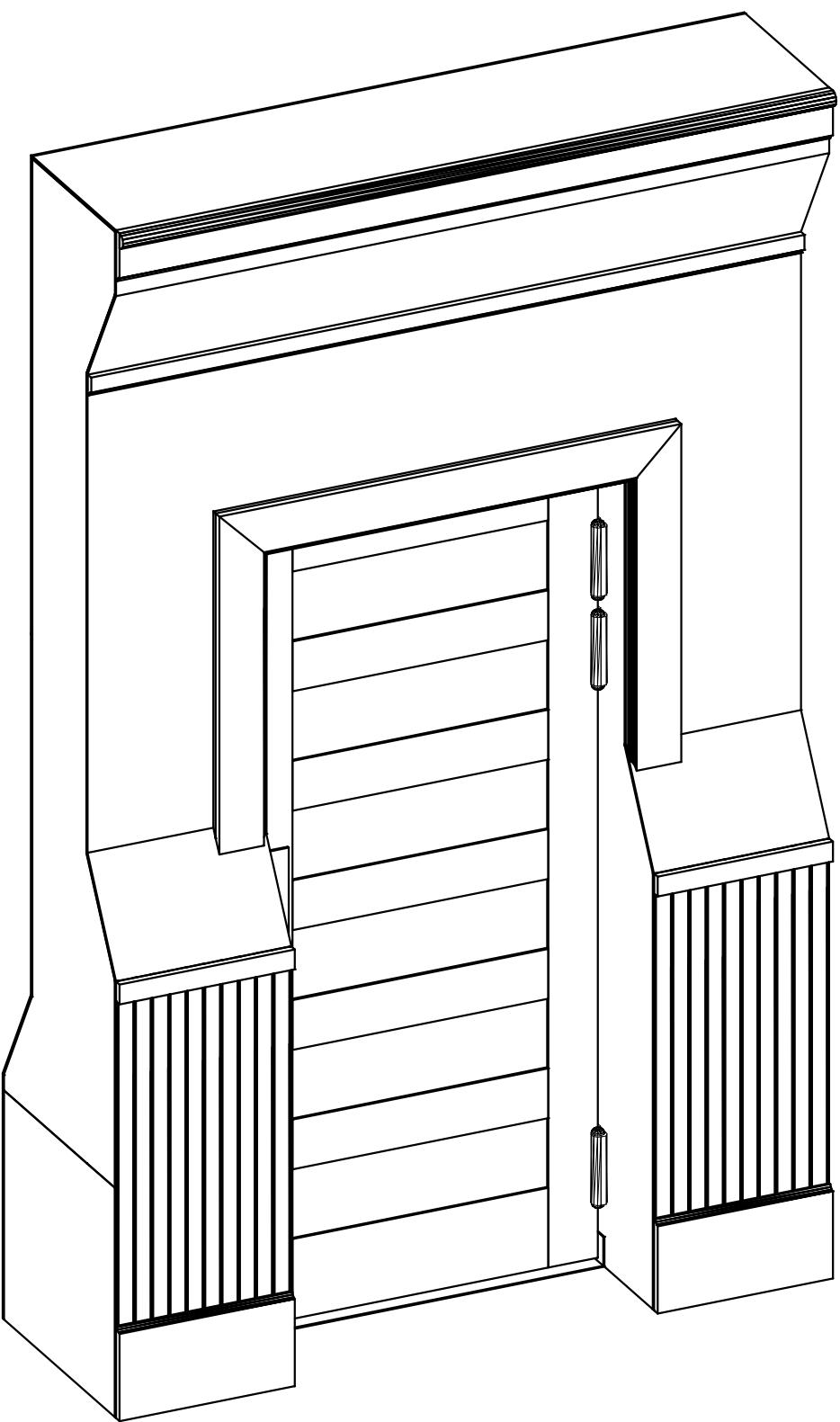
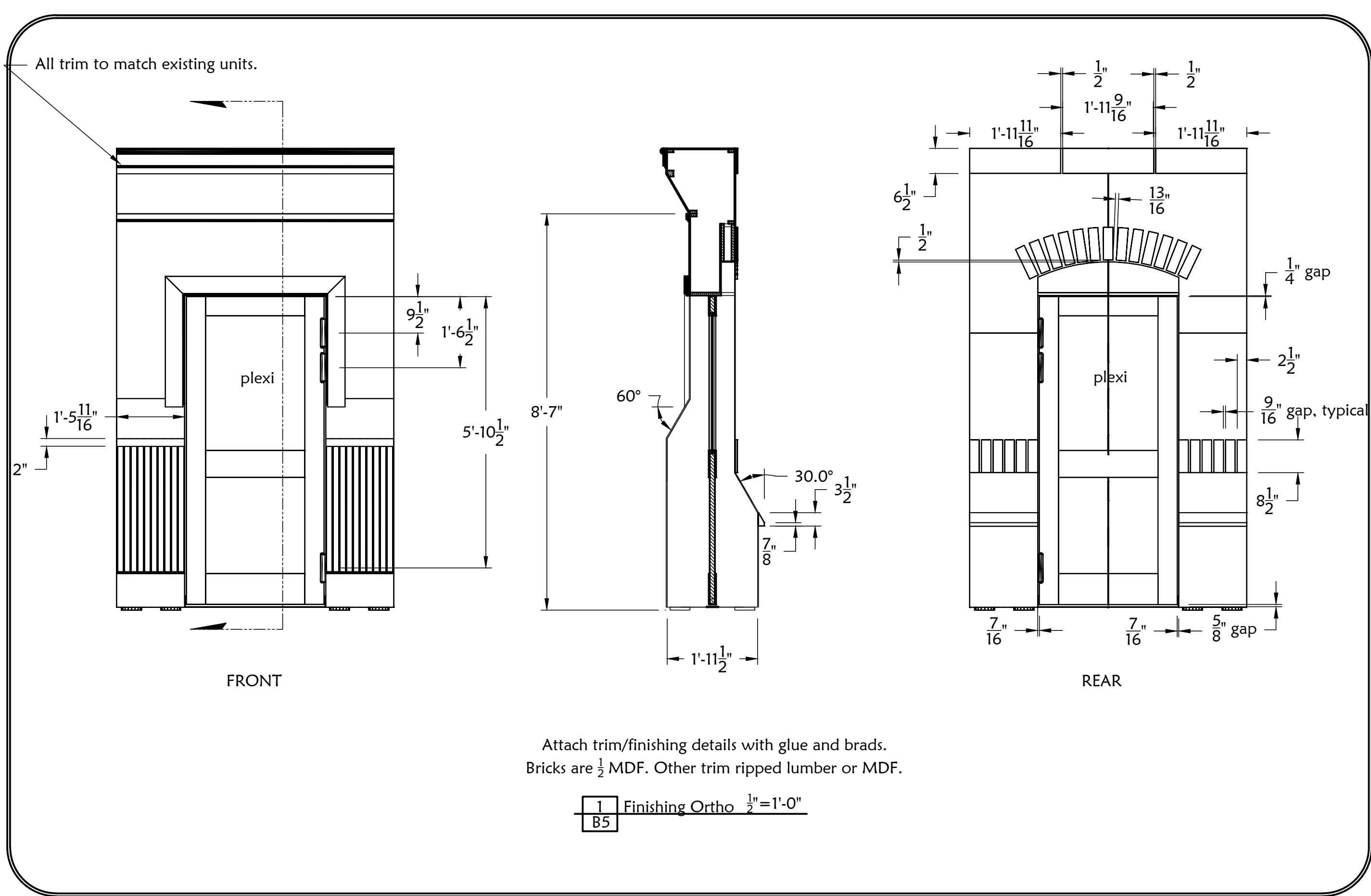
5	Door Modification	$\frac{1}{2}''=1'-0''$
B4		

6	Door Plexi Frame	$\frac{1}{2}" = 1'-0"$
B4		

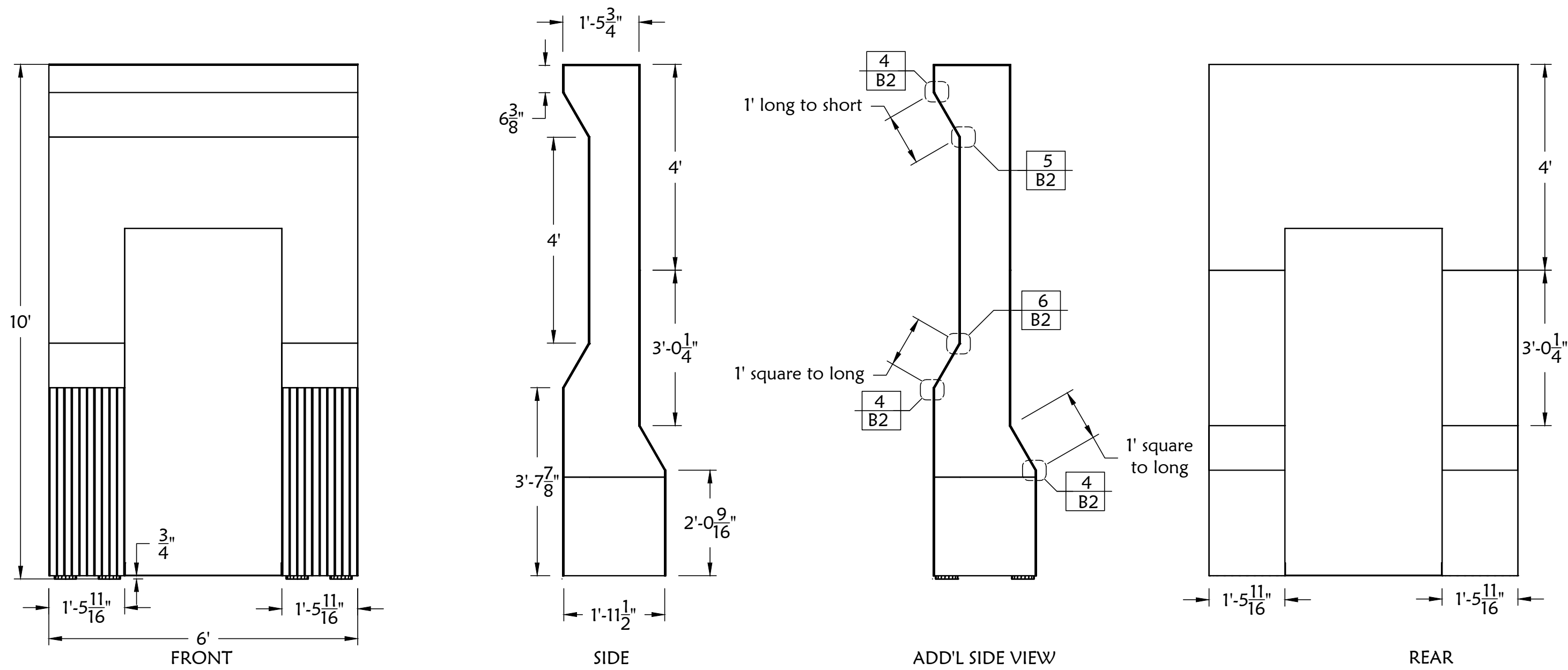
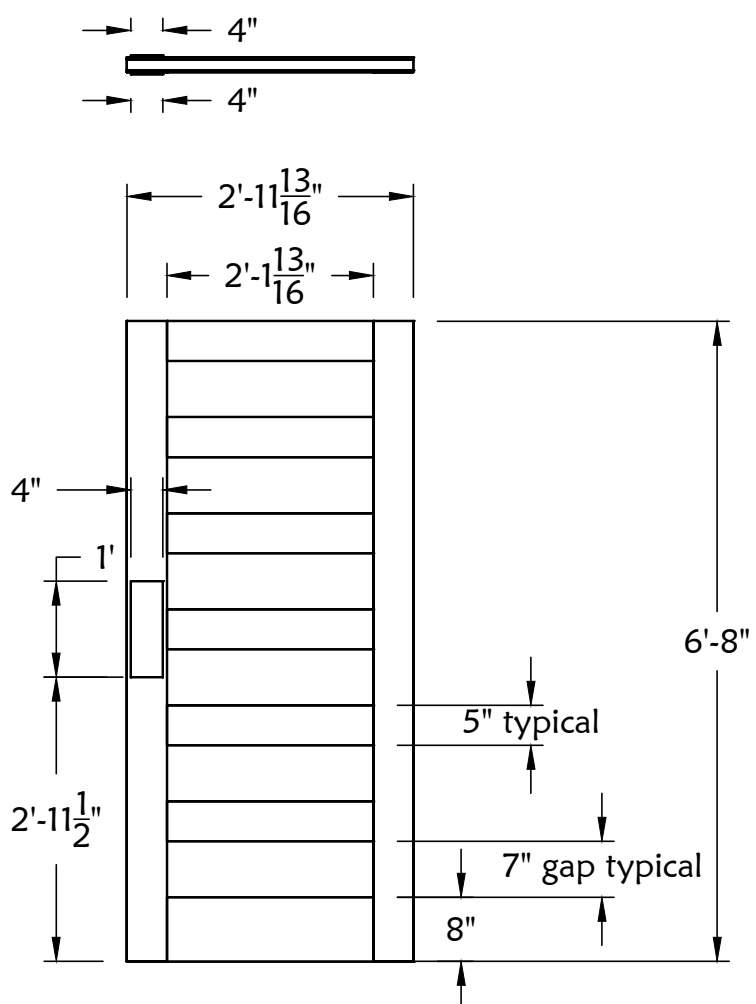
8	Luan Applique/Trim	$\frac{1}{2}"=1'-0"$
B4		



B4

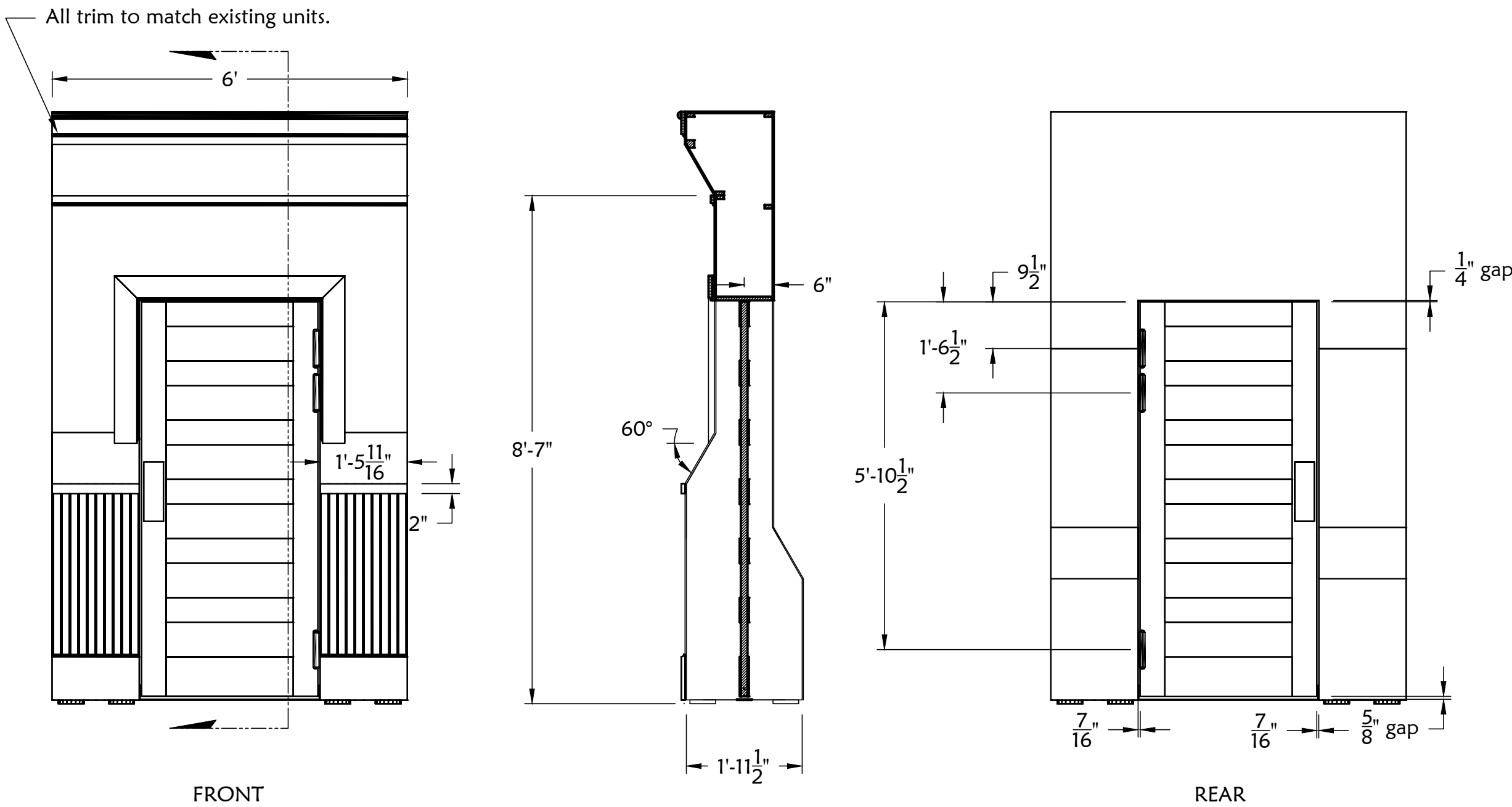


2 B5 Assembled SRC



Skin 1 as shown with 1/4" luan and 1/4" beadboard.
Attach with glue and narrow crown.

4 B5 Skin Ortho 1/2"=1'-0"



Attach trim/finishing details with glue and brads.

5 B5 Finishing Ortho 1/2"=1'-0"



Billy Elliot

Plate Name: SRA Trim and SRC			Plate:
Director: S Minning	Tech Director: ...	Date: 6/18/15 Rev: 6/18/15	B5
Scenic Designer: ..	Drawn by: B5tark	Scale: As Noted	