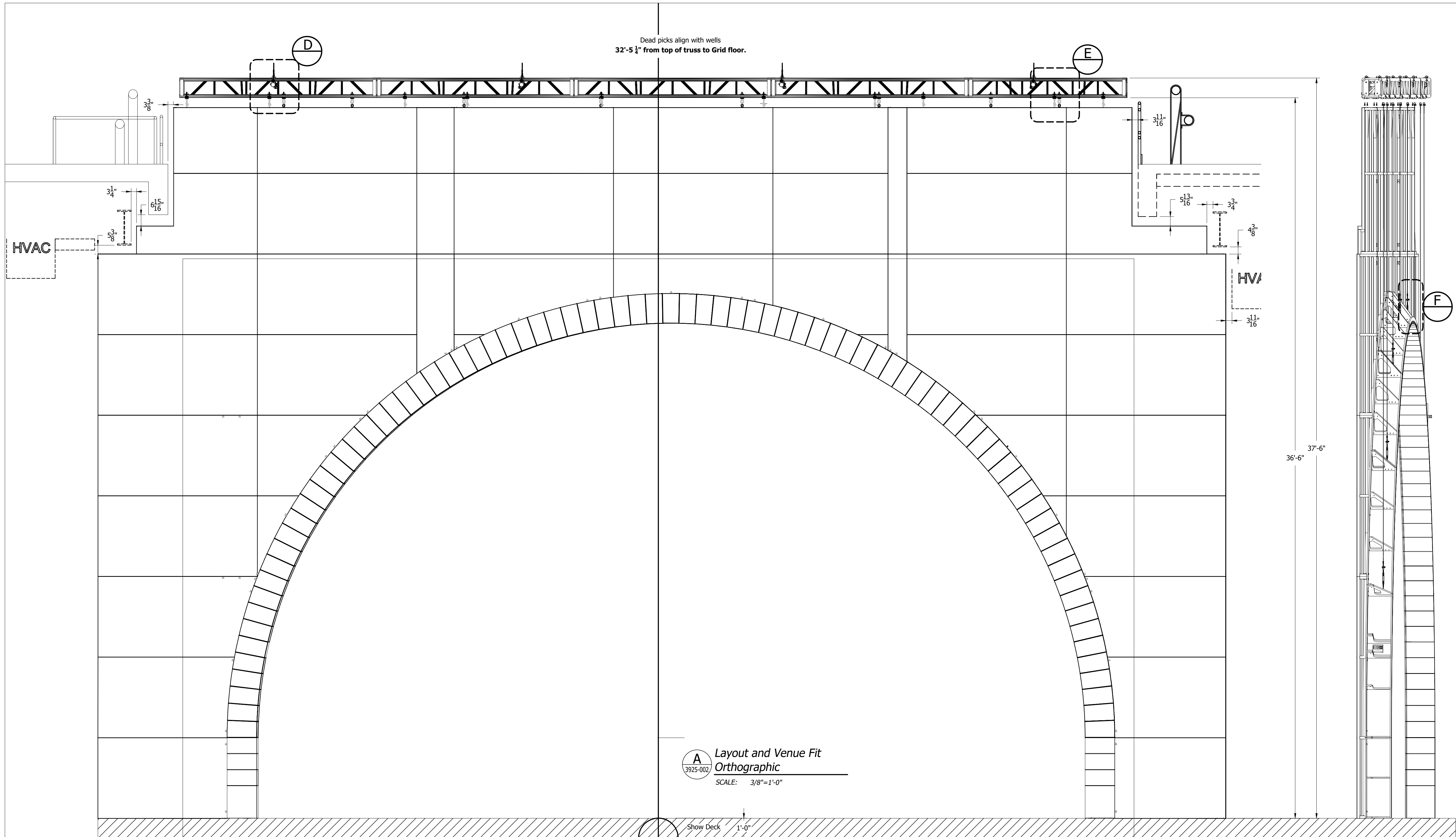
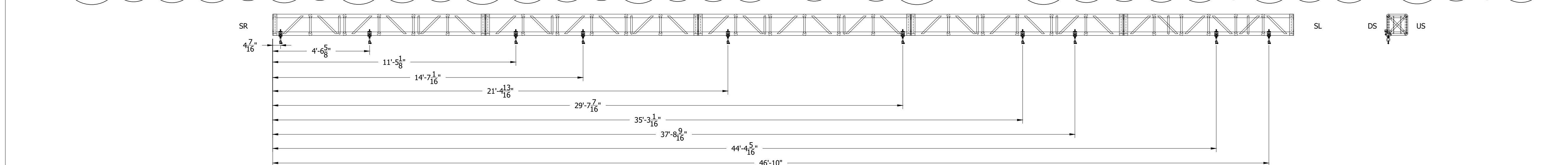
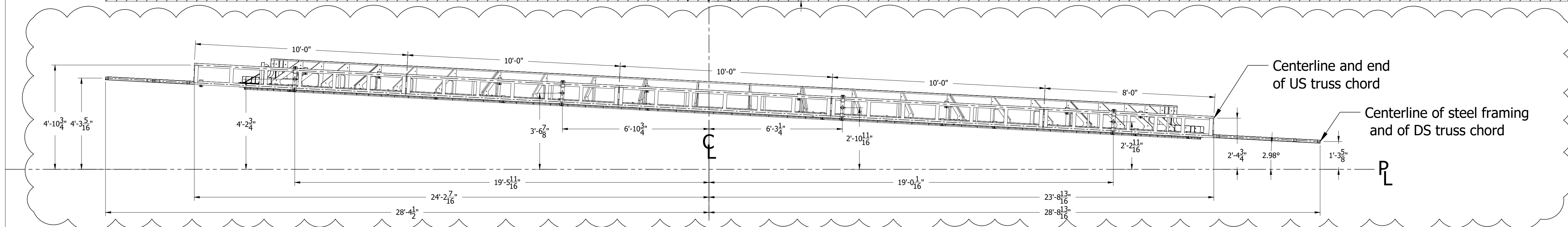


Stark

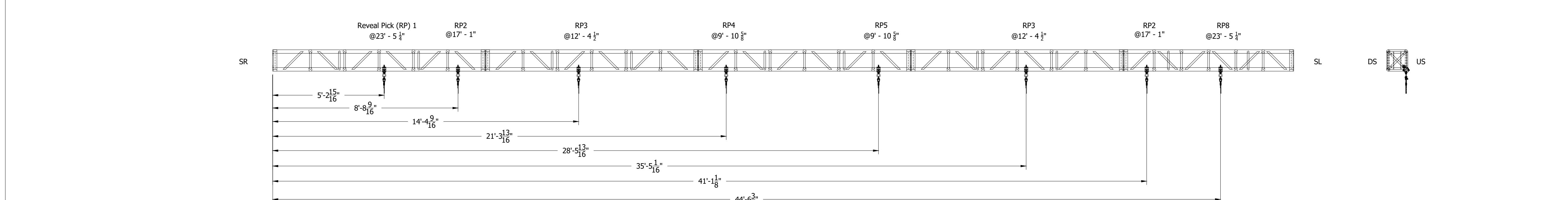




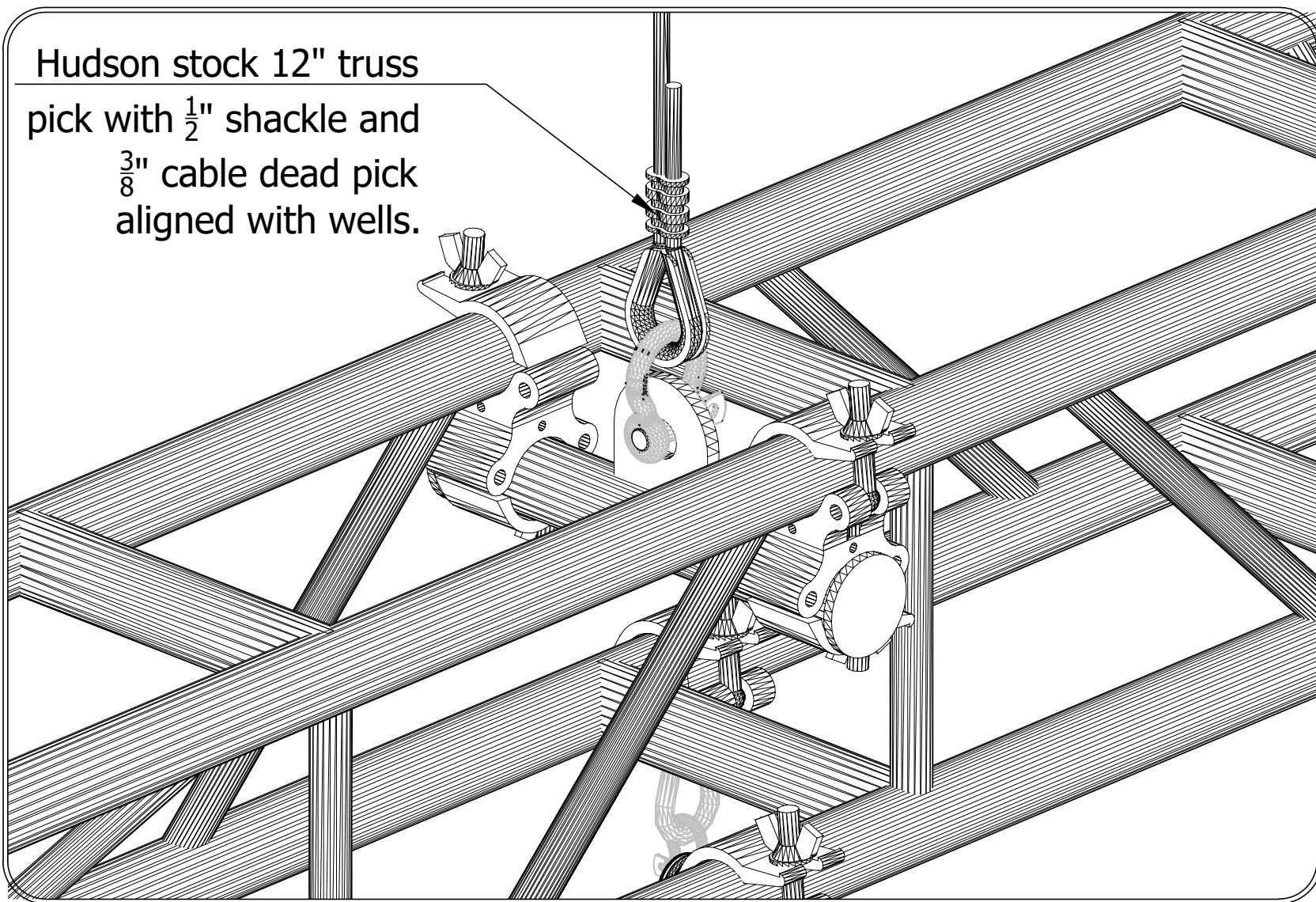
**A** Layout and Venue Fit  
Orthographic  
SCALE: 3/8"=1'-0"



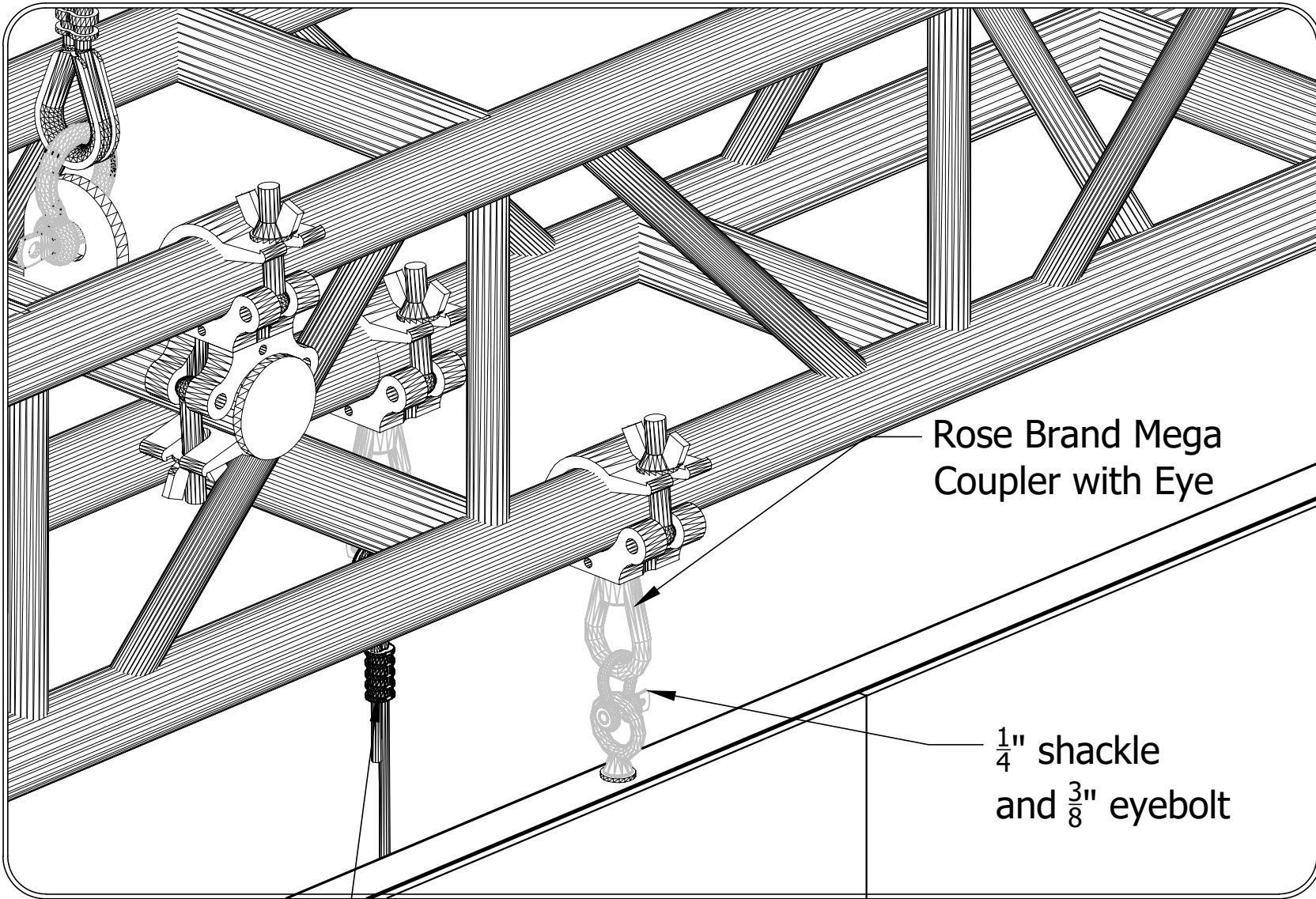
**B** Wall Pick/DS Chord Point Layout  
Orthographic  
SCALE: 3/8"=1'-0"



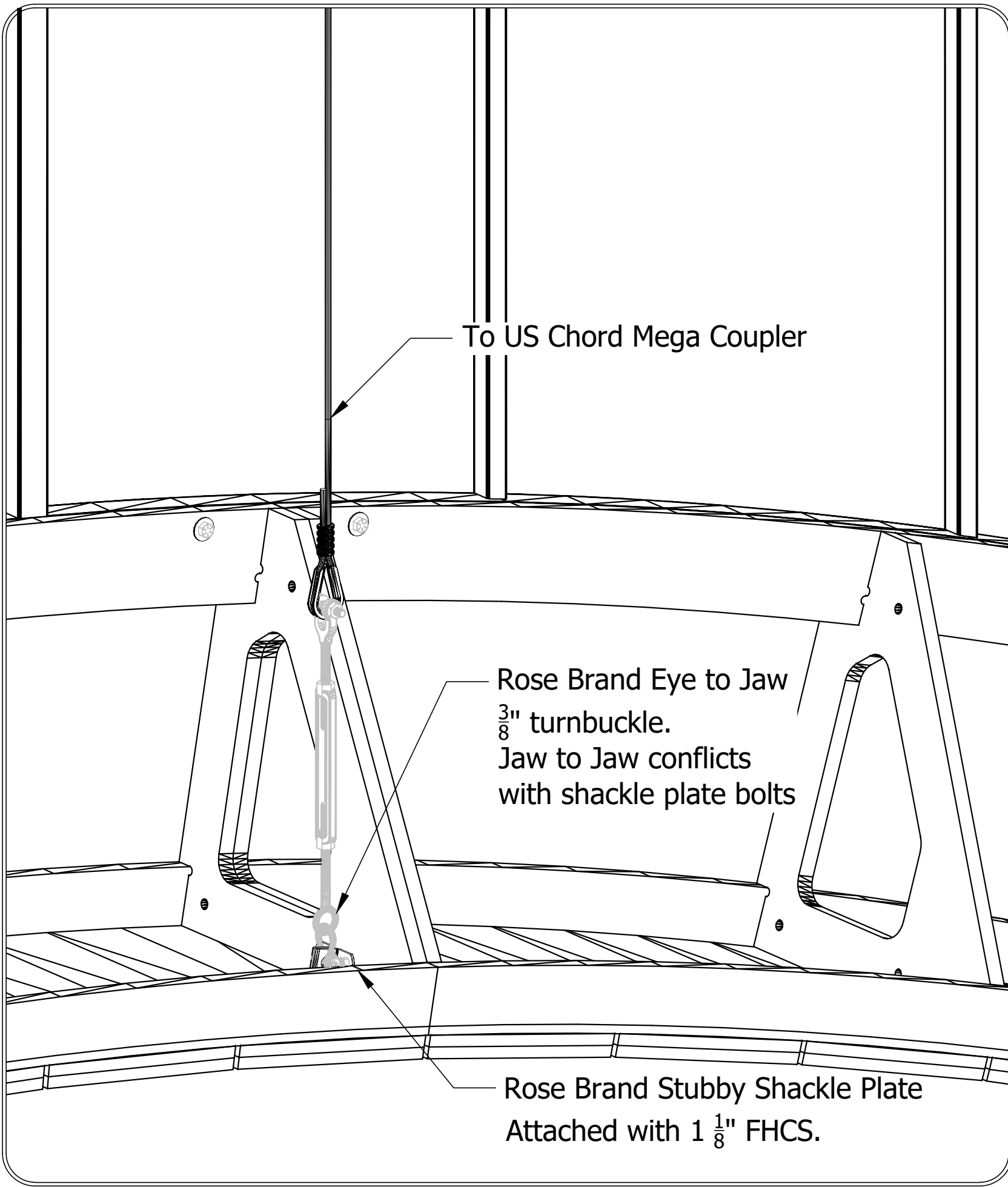
**C** US Chord/ Reveal Pick Layout  
Orthographic  
SCALE: 3/8"=1'-0"



**D** Truss Hanging Detail  
Iso  
SCALE: NA



**E** Wall US and DS Chord Detail  
Iso  
SCALE: NA  
18 points required



**F** Reveal Rigging Point  
Iso  
SCALE: NA  
8 Points required

PROPRIETARY INFORMATION

Information provided in these drawings is proprietary to HUDSON SCENIC STUDIO, INC.. These drawings are provided to the subcontractor for use in conjunction with the present production and for no other purpose. The subcontractor agrees that it shall not utilize, duplicate, simulate or copy the construction of the equipment described without obtaining the prior written consent of HUDSON SCENIC STUDIO, INC.

**HUDSON**  
SCENIC STUDIO

130 Fernbrook Street  
Yonkers, NY 10705

tel 914.375.0900  
fax 914.378.9134

STANDARD TOLERANCES

MACHINING:	
X.X	± 0.050"
X.XX	± 0.005"
X.XXX	± 0.0005"
X.XXXX	± 0.00005"
ANG.	± 0.5°

WELDING/ASSEMBLY/LAYOUTS:

DIMENSION 0"-12"	± 1/32"
DIMENSION 12"-120"	± 1/16"
DIMENSION 120" +	± 1/8"
ANG.	± .5°

THIRD ANGLE PROJECTION

Original  
Updated Dead Pick Locations based on show carp preference  
Upgraded dead picks to 3/8" cable due to load

Revision Notes:

Rev	Date	Init.
3	12/21/22	BS
2	12/16/22	BS
1		

**Sweeney Todd**  
DS Arch  
Rigging

Complete this job:  
Hudson Sweeney/Sweeney Todd - 3925/03000 DS Arch

Job #	Unit #
3925	03000

Design Ref.:	Sheet Number:
006	-002

Issue Date:	Rev:
12/21/22	3

Scale: ARCH E1 - 30 x 42

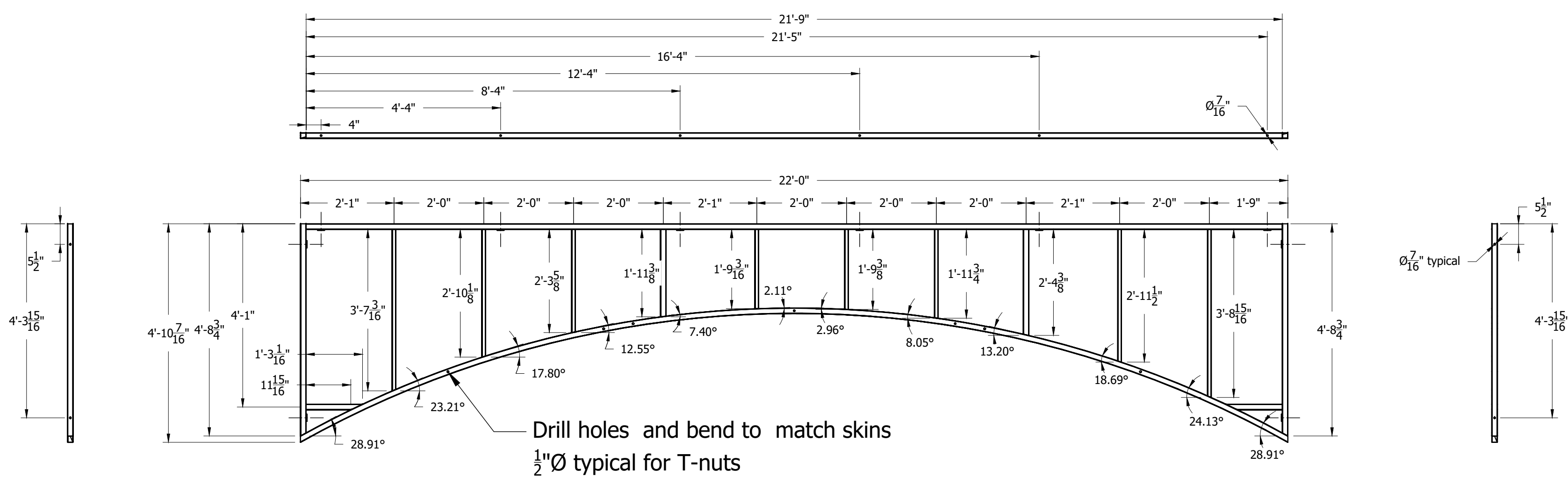
as noted

Reviewed by: Pending Review

Drawn by: Stark



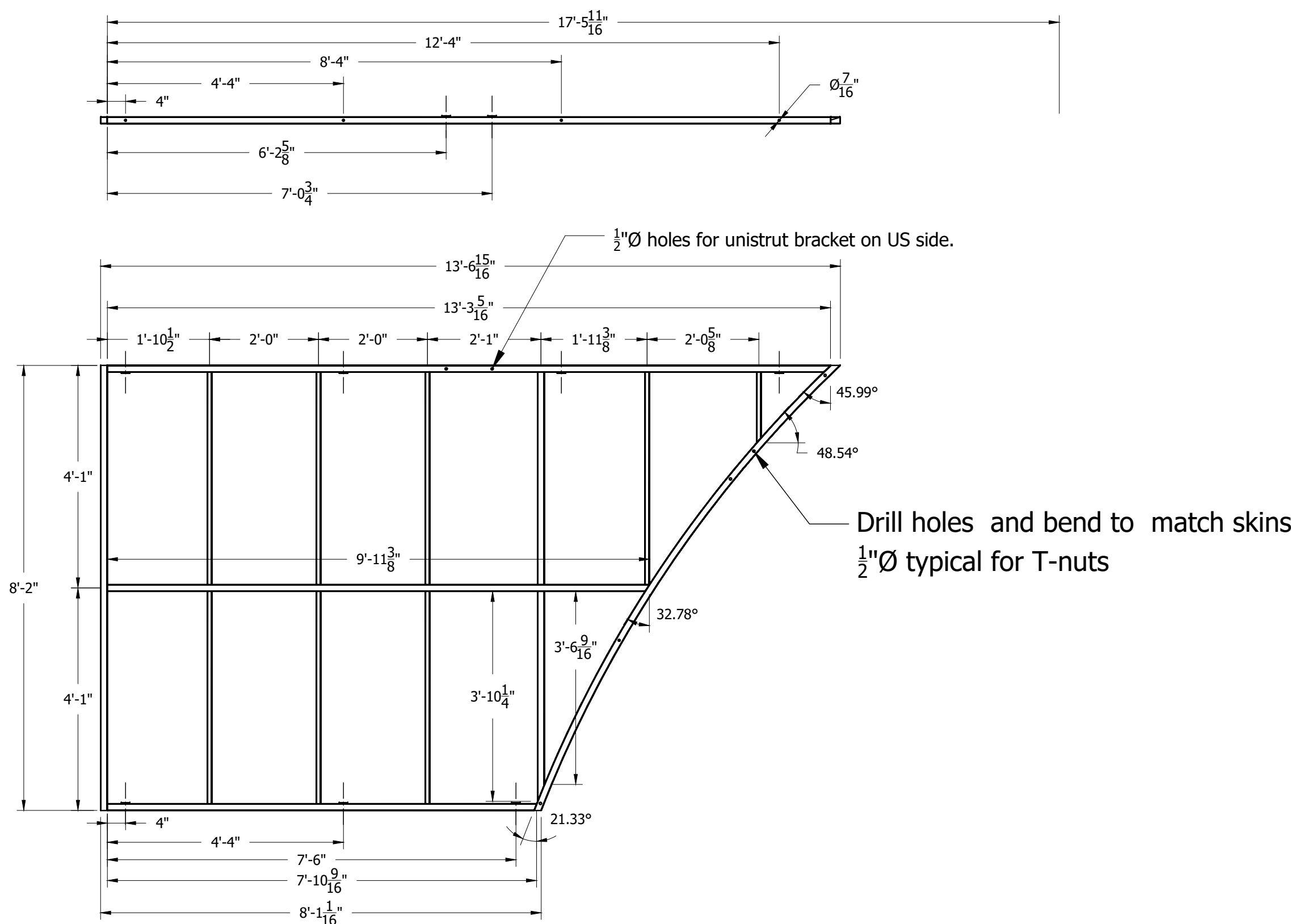




**DS-5 Frame**  
**Orthographic**

SCALE: 1/2"=1'-0"

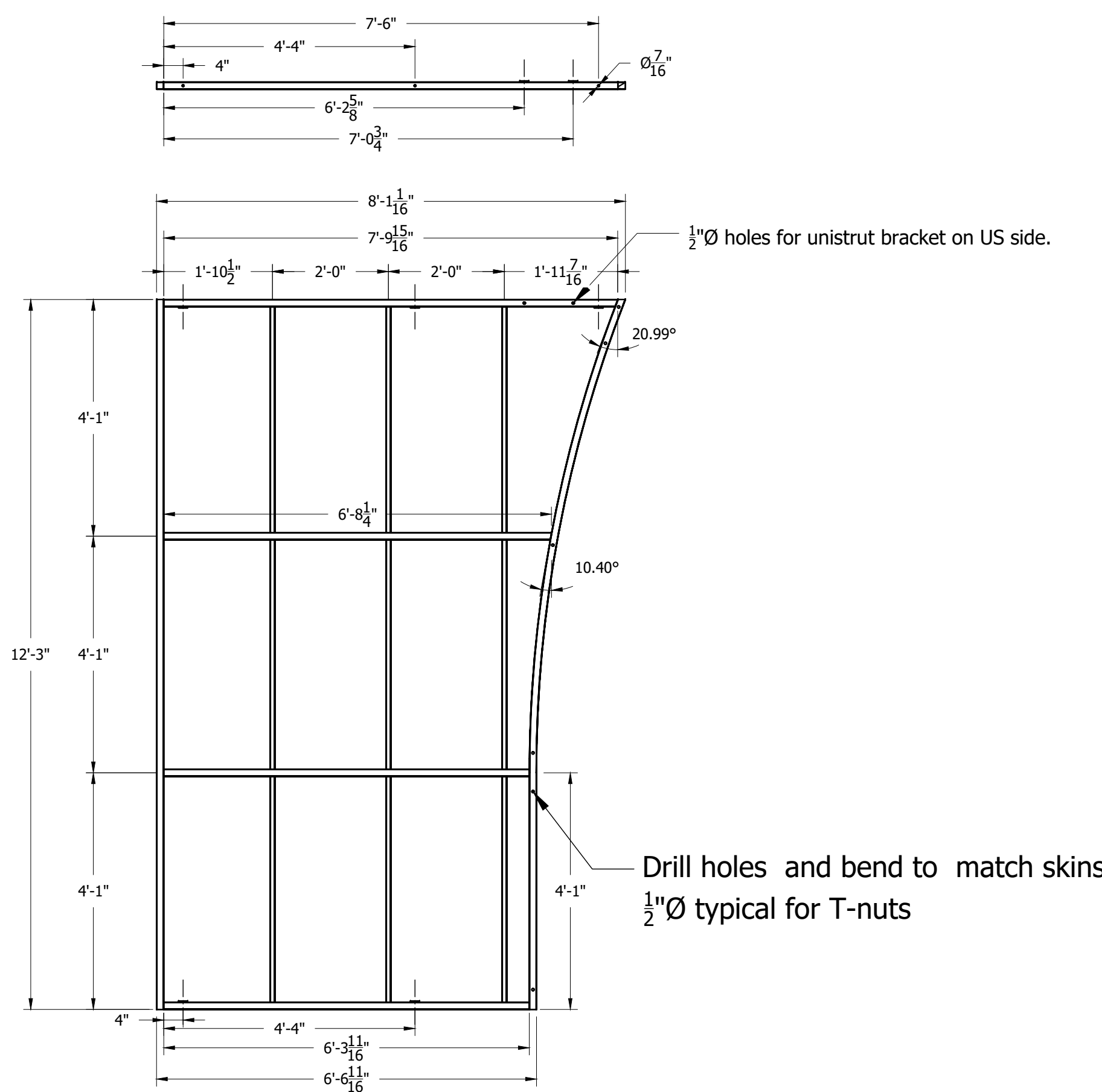
Build 1 from 1.5x1.5x16g and 1x1x16g HSS



**DS-7 Frame**  
**Orthographic**

SCALE: 1/2"=1'-0"

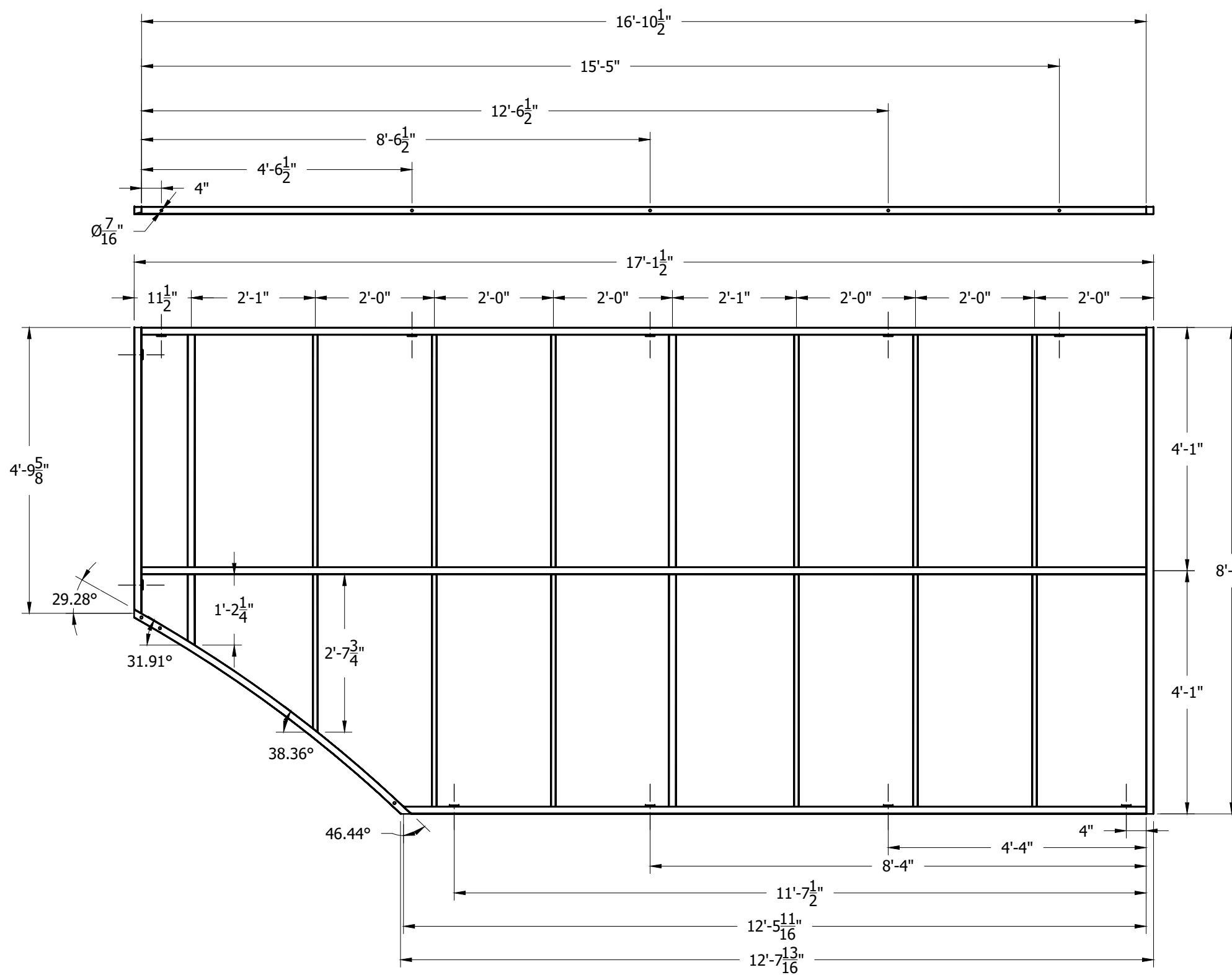
Build 1 from 1.5x1.5x16g and 1x1x16g HSS



**DS-9 Frame**  
**Orthographic**

SCALE: 1/2"=1'-0"

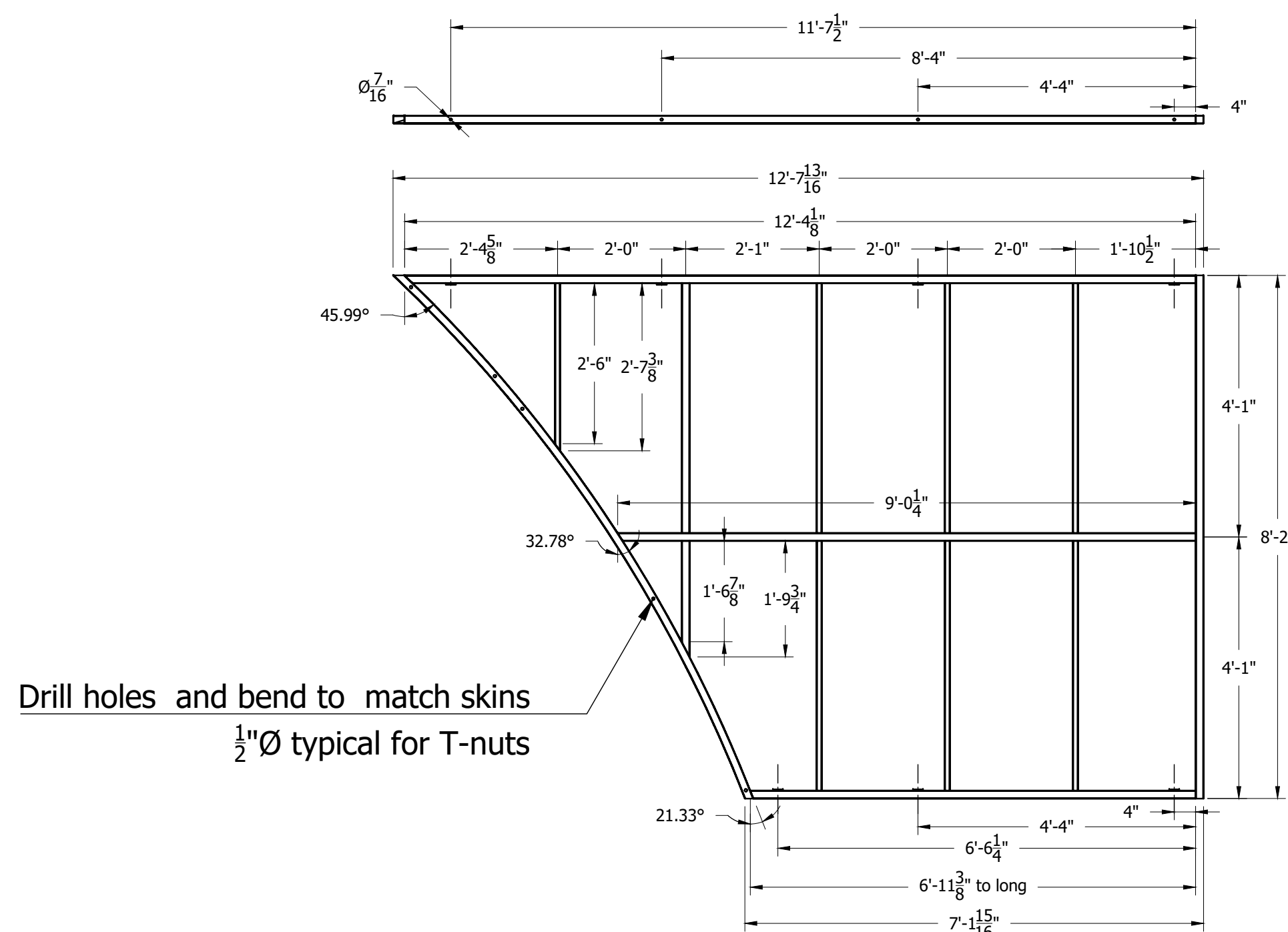
Build 1 from 1.5x1.5x16g and 1x1x16g HSS



**DS-6 Frame**  
**Orthographic**

SCALE: 1/2"=1'-0"

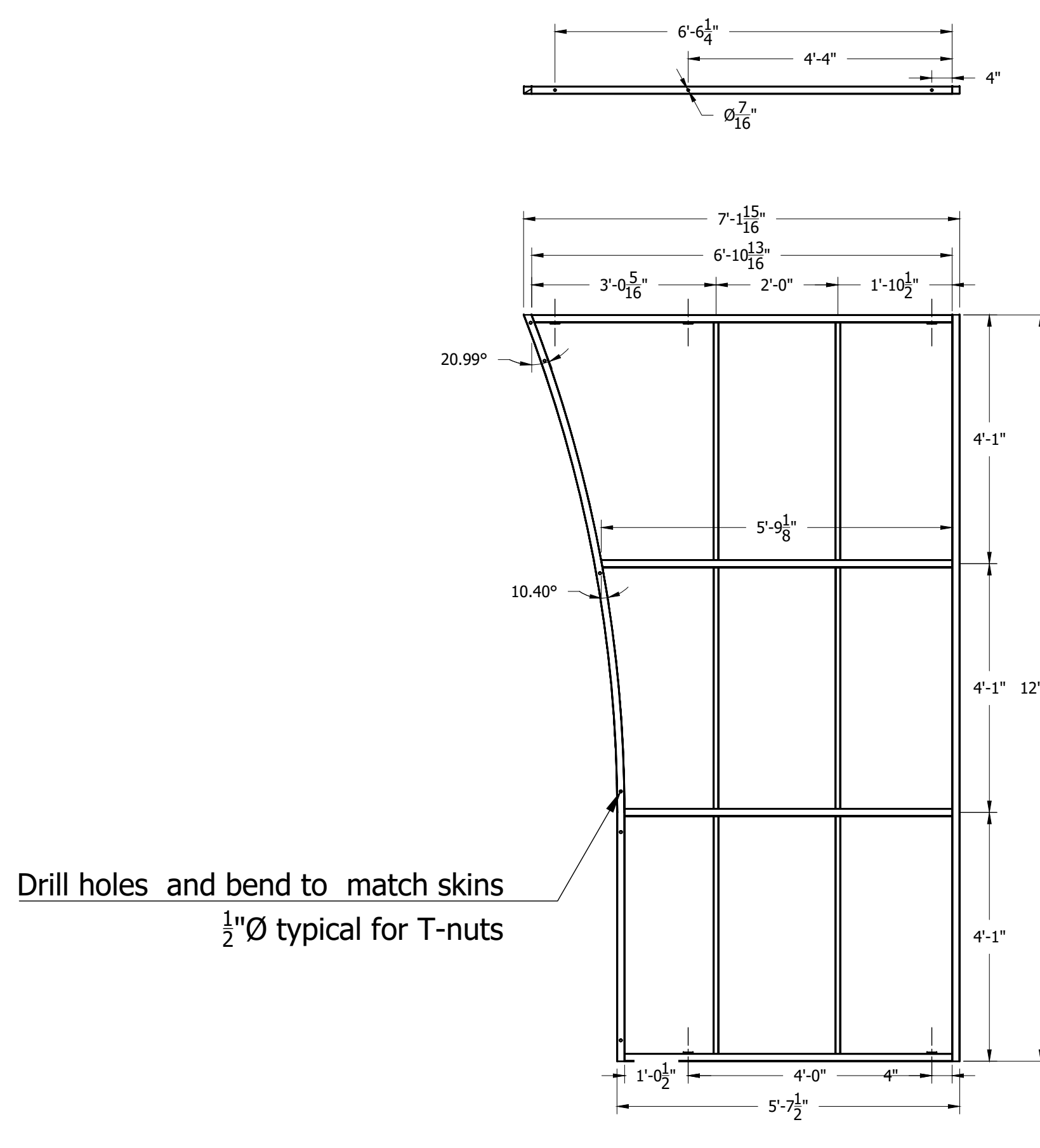
Build 1 from 1.5x1.5x16g and 1x1x16g HSS



**DS-8 Frame**  
**Orthographic**

SCALE: 1/2"=1'-0"

Build 1 from 1.5x1.5x16g and 1x1x16g HSS



**DS-10 Frame**  
**Orthographic**

SCALE: 1/2"=1'-0"

Build 1 from 1.5x1.5x16g and 1x1x16g HSS

**PROPRIETARY INFORMATION**  
Information provided in these drawings is proprietary to HUDSON SCENIC STUDIO, INC.. These drawings are provided to the subcontractor for use in conjunction with the present production and for no other purpose. The subcontractor agrees that it shall not utilize, duplicate, simulate or copy the construction of the equipment described without obtaining the prior written consent of HUDSON SCENIC STUDIO, INC.

**HUDSON**  
SCENIC STUDIO  
130 Fernbrook Street  
Yonkers, NY 10705

tel 914.375.0900  
fax 914.378.9134

**STANDARD TOLERANCES**

**MACHINING:**  
X.X ± 0.050"  
X.XX ± 0.005"  
X.XXX ± 0.0005"  
X.XXXX ± 0.00005"  
ANG. ± 0.5°

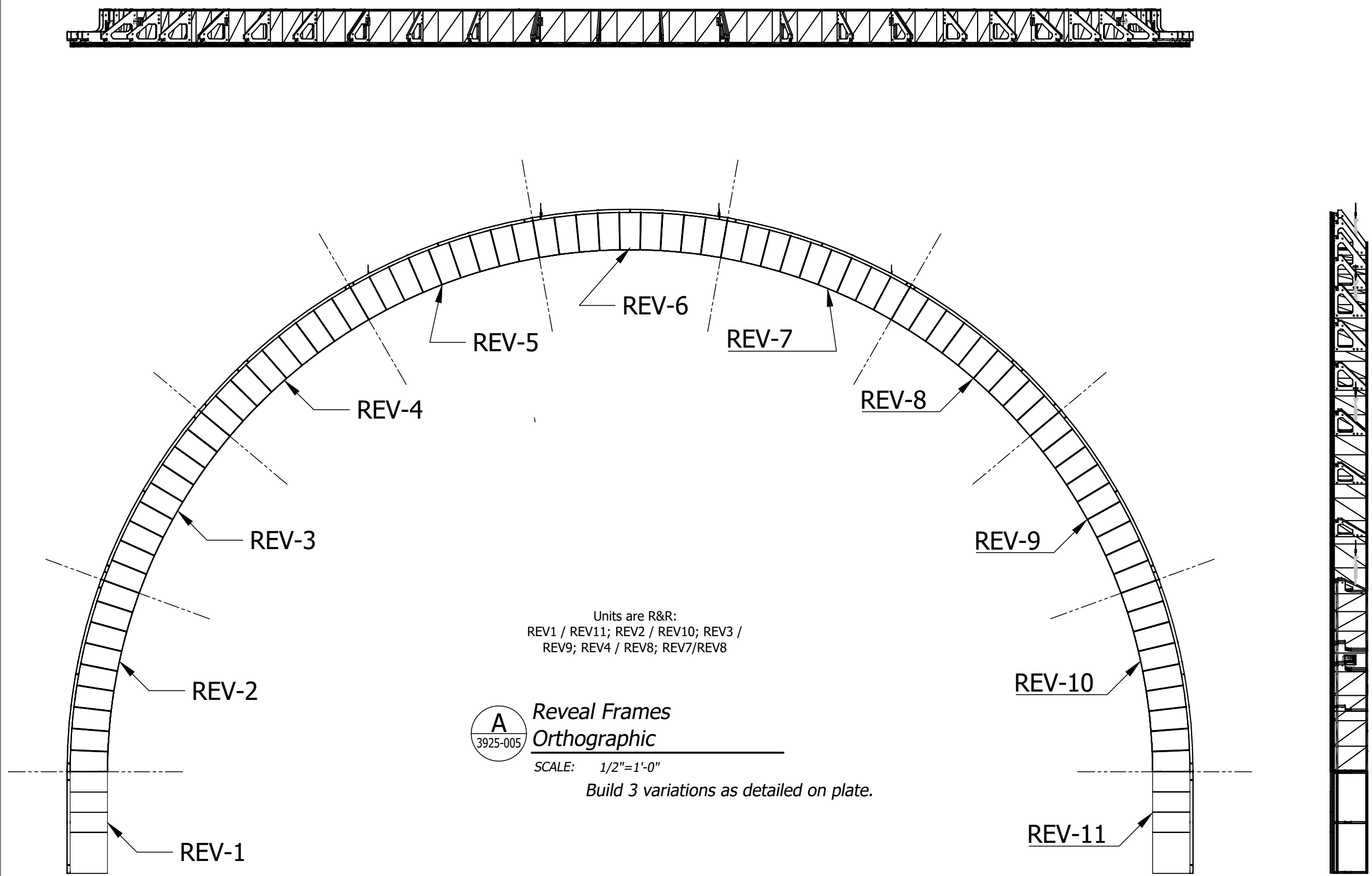
**WELDING/ASSEMBLY/LAYOUTS:**  
DIMENSION 0"-12" ± 1/32"  
DIMENSION 12"-120" ± 1/16"  
DIMENSION 120" + ± 1/8"  
ANG. ± .5°

**THIRD ANGLE PROJECTION**

Original	Revised
1	12/16/22
Rev Date:	12/16/22
Rev:	1

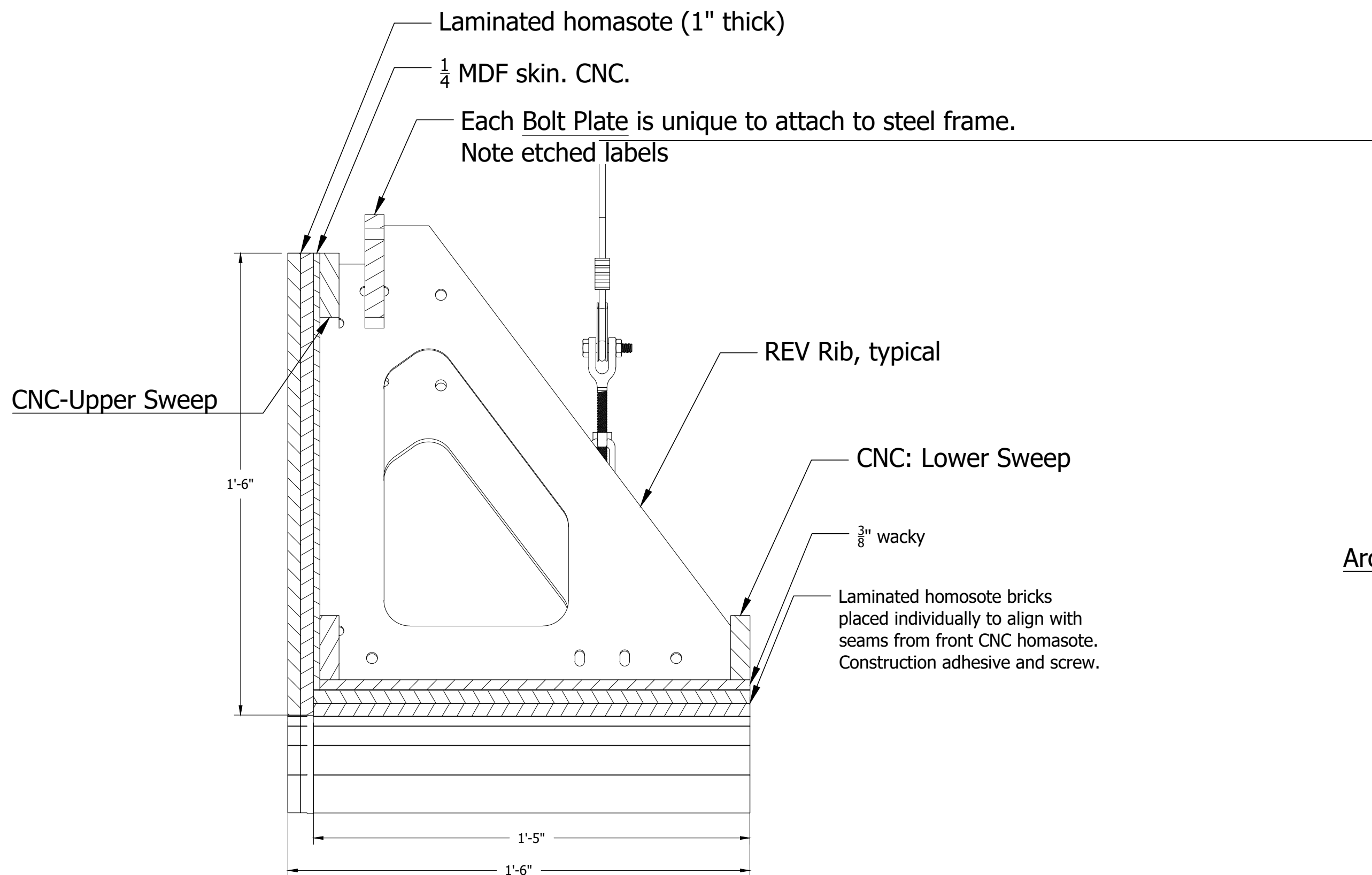
**Sweeney Todd**  
DS Arch  
Metal Frames: DS5-DS10  
Complete the job:  
HUDSON SCENIC STUDIO/Sweeney Todd - 3925/03000 DS Arch

Job #	Unit #
3925	03000
Design Ref.:	Sheet Number:
006 -004	
Issue Date:	Rev:
12/16/22	
Scale:	ARCH E1 - 30 x 42
as noted	
Reviewed by:	Drawn by:
Pending Review	Stark

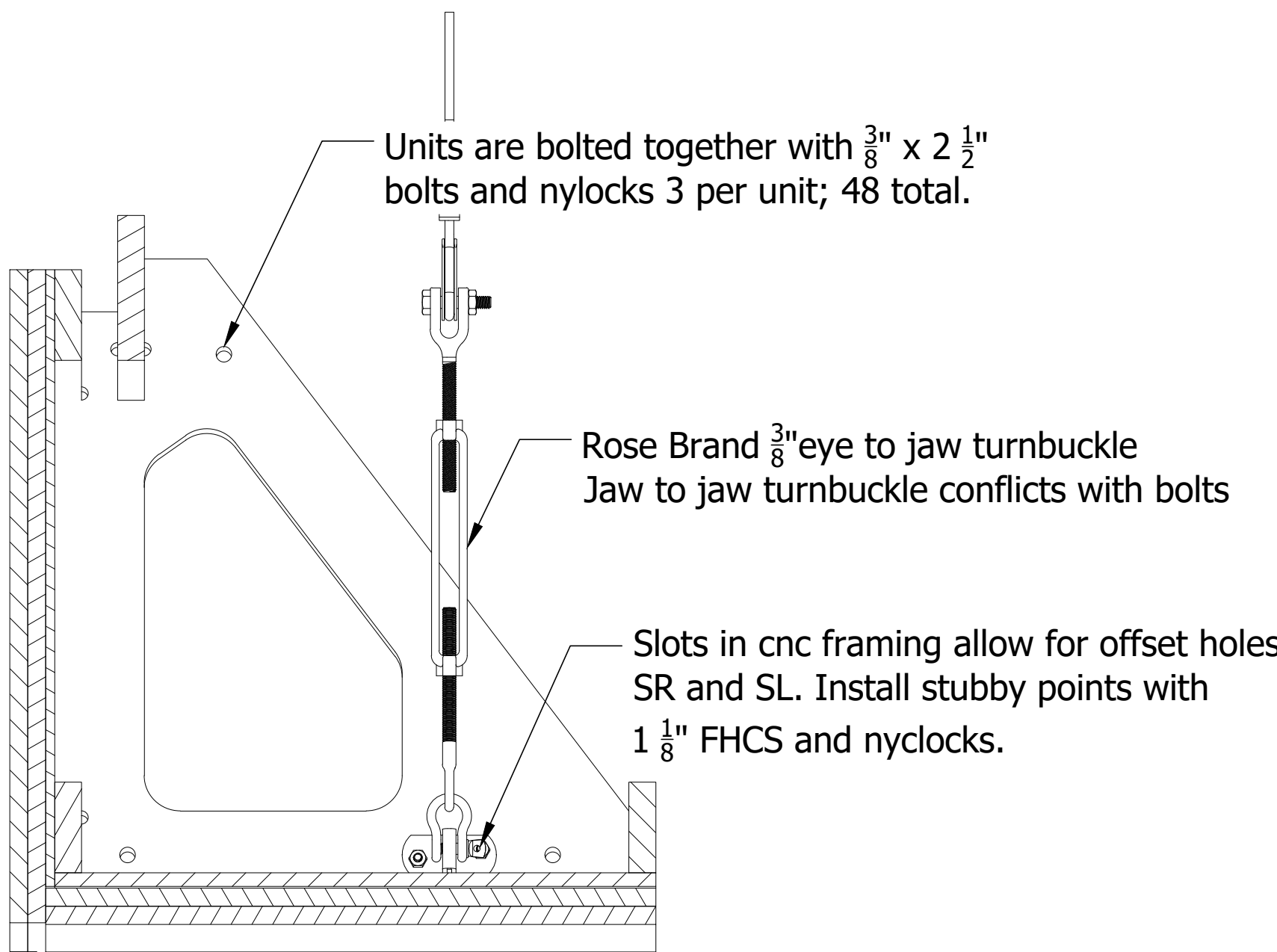


Units are R&R:  
REV1 / REV11; REV2 / REV10; REV3 /  
REV9; REV4 / REV8; REV5 / REV7/REV6

**A** **Reveal Frames**  
**Orthographic**  
SCALE: 1/2"=1'-0"  
Build 3 variations as detailed on plate.

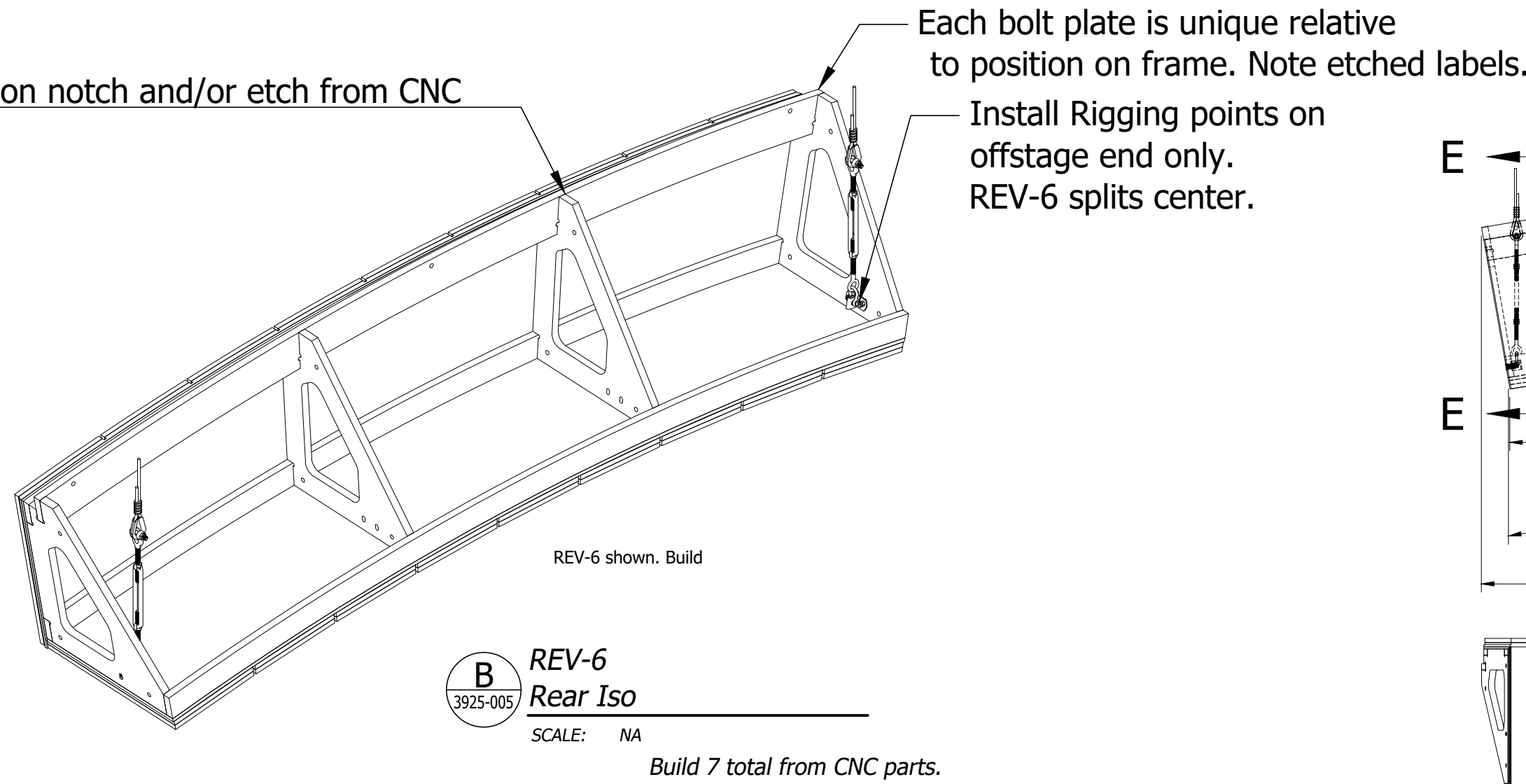


SECTION D-D  
SCALE 3" = 1'-0"

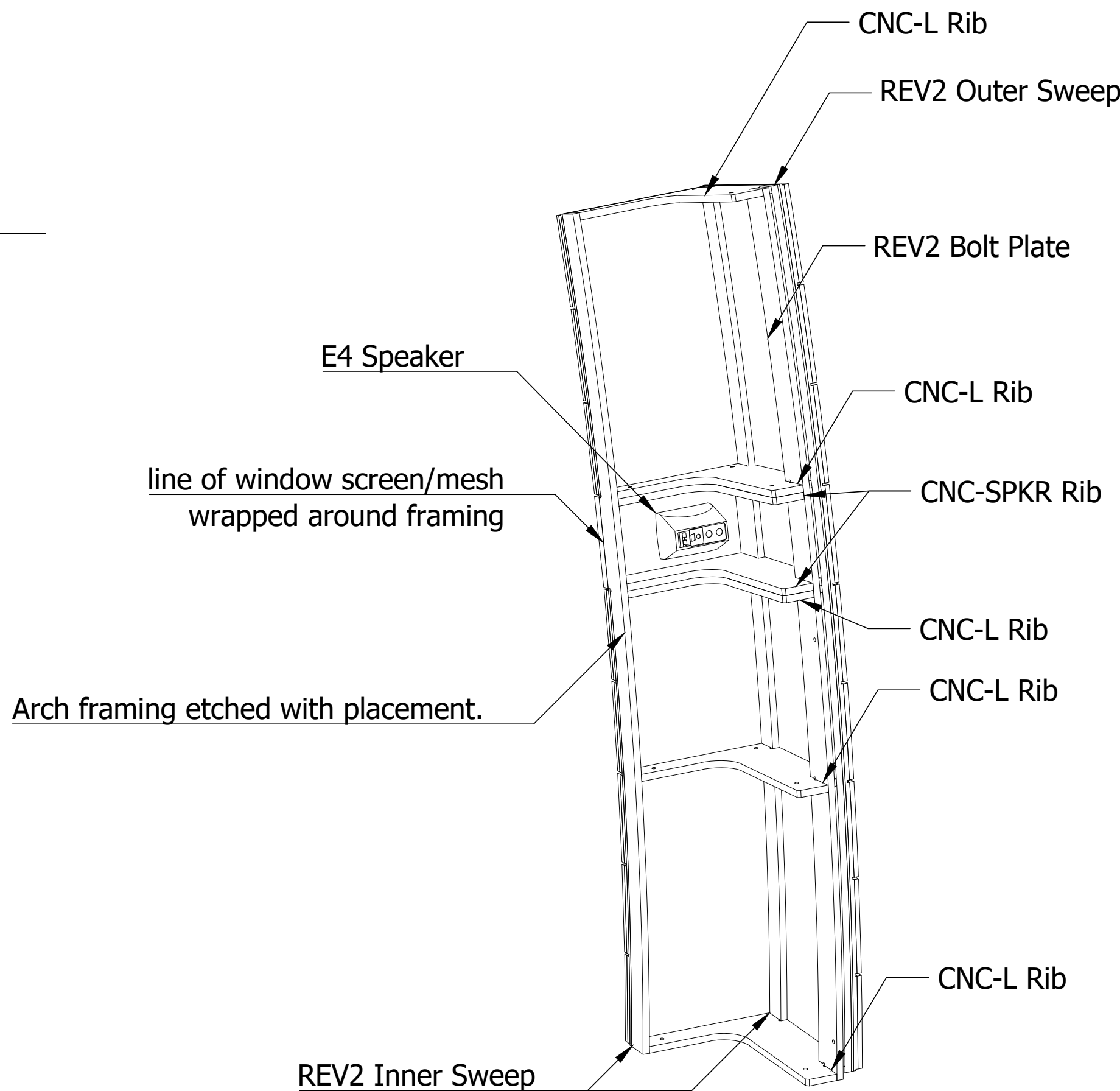


SECTION E-E  
SCALE 3" = 1'-0"

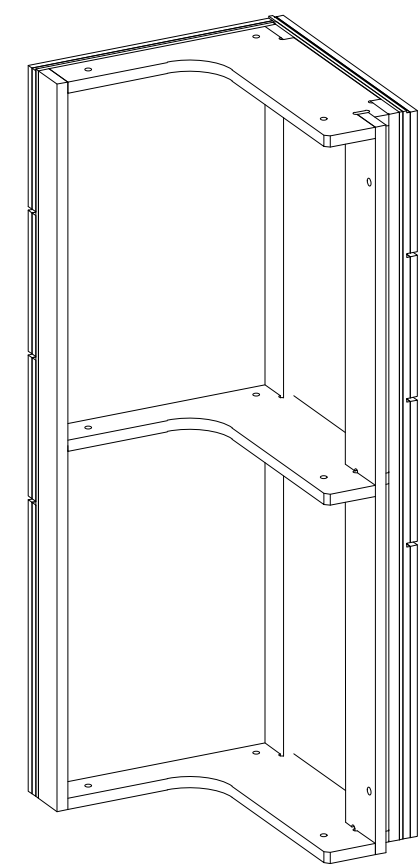
Place ribs based on notch and/or etch from CNC



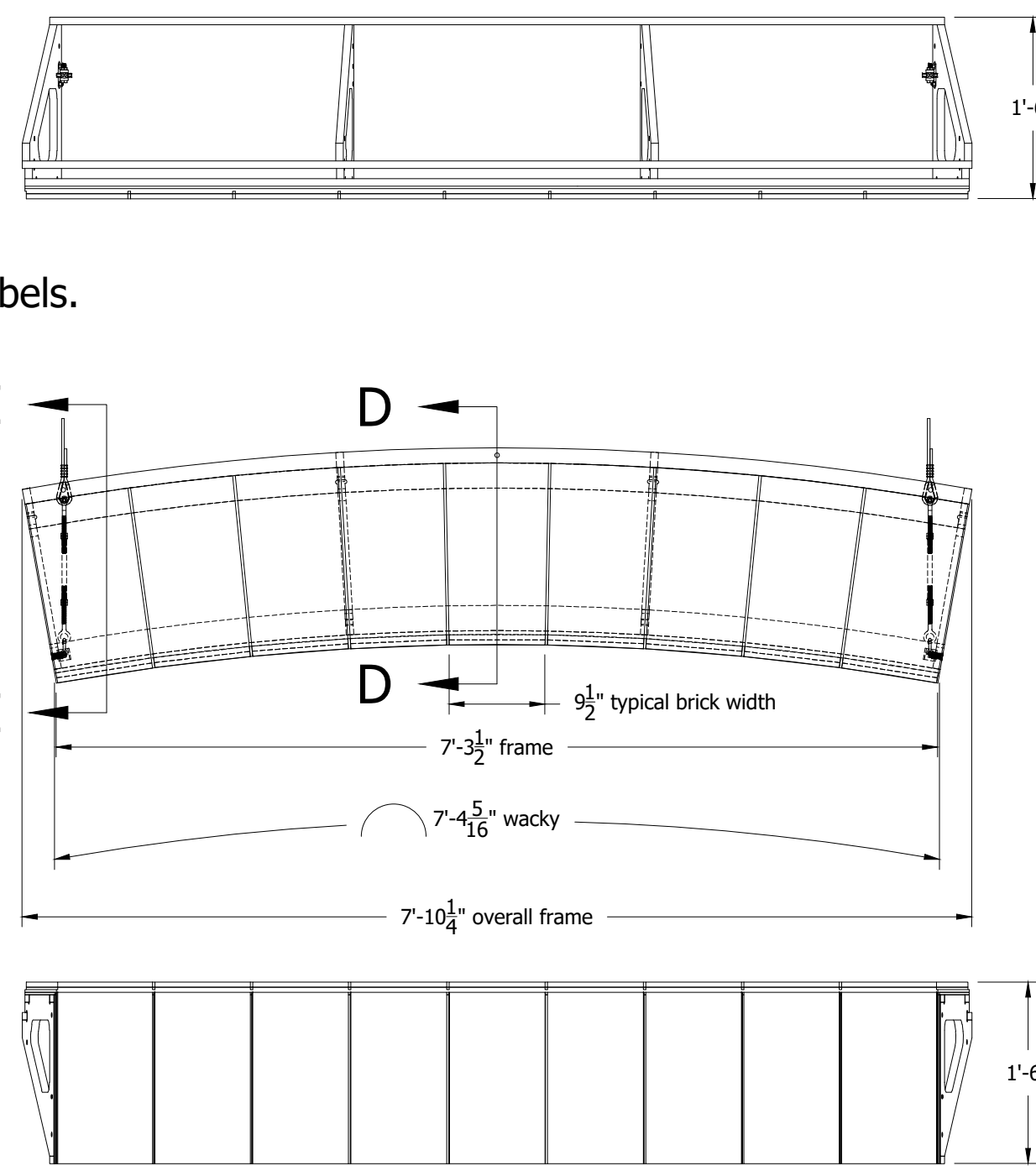
**B** **REV-6**  
**Rear Iso**  
SCALE: NA  
Build 7 total from CNC parts.



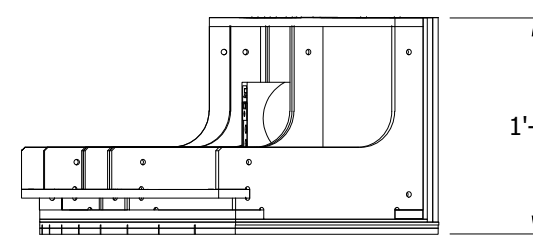
**D** **REV-2**  
**Rear Iso**  
SCALE: NA  
Build 1 R&R for REV-10



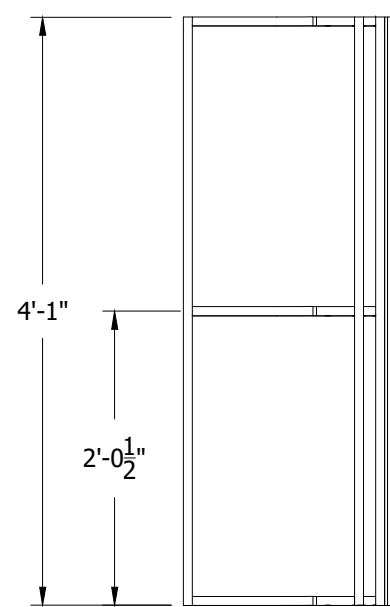
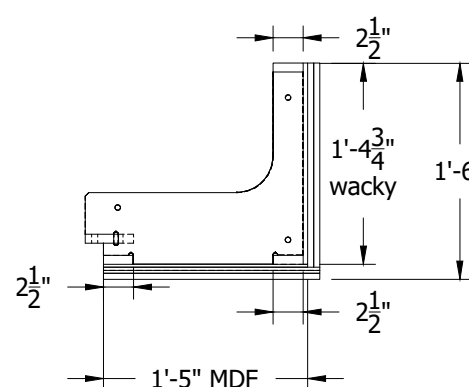
**F** **REV-1**  
**Rear Iso**  
SCALE: NA  
Build 1as drawn; 1 R&R for REV-11



**C** **REV-6**  
**Orthographic**  
SCALE: 3/4"=1'-0"  
Build 7 total from CNC parts.



**E** **REV-2**  
**Orthographic**  
SCALE: 3/4"=1'-0"  
Build 1 as drawn; 1 R&R (REV-10)



**G** **REV-1**  
**Orthographic**  
SCALE: 3/4"=1'-0"  
Build 1as drawn; 1 R&R for REV-11

PROPRIETARY INFORMATION

Information provided in these drawings is proprietary to HUDSON SCENIC STUDIO, INC.. These drawings are provided to the subcontractor for use in conjunction with the present production and for no other purpose. The subcontractor agrees that it shall not utilize, duplicate, simulate or copy the construction of the equipment described without obtaining the prior written consent of HUDSON SCENIC STUDIO, INC.

**HUDSON**  
SCENIC STUDIO

130 Fernbrook Street  
Yonkers, NY 10705

tel 914.375.0900  
fax 914.378.9134

STANDARD TOLERANCES

MACHINING:

X.X ± 0.050"

X.XX ± 0.005"

X.XXX ± 0.0005"

X.XXXX ± 0.00005"

ANG. ± 0.5°

WELDING/ASSEMBLY/LAYOUTS:

DIMENSION 0"-12" ± 1/32"

DIMENSION 12"-120" ± 1/16"

DIMENSION 120" + ± 1/8"

ANG. ± .5°

THIRD ANGLE PROJECTION

Original

Rev

12/16/22

1

Rev Date:

Rev:

Revision Notes:

12/16/22

1

Sweeney Todd

DS Arch

Reveal Frames

Job #

Unit #

3925

03000

Design Ref.:

Sheet Number:

006 -005

Issue Date:

Rev:

12/16/22

-

Scale:

ARCH E1 - 30 x 42

as noted

Reviewed by:

Drawn by:

Pending Review

Stark

Complete this job:

HUDSON Scenic/Sweeney Todd - 3925/03000 DS Arch