

# — Theatre and Dance Season 2017-2018 —

MAIN STAGE



## THE ARSONISTS

by Max Frisch, translated by Alistair Beaton

Oct. 5-15

Mark A. Chapman Theatre

Respected community member Gottlieb Biedermann believes nothing can upset his good fortune; the fires plaguing the city beg to differ. Being philanthropic, he happily fulfills his civic duty by giving shelter to two houseguests. When they start filling the attic with drums of gasoline what is an accommodating host to do but help them light the fuse?



## INTO THE WOODS

Music and Lyrics by Stephen Sondheim, Book by James Lapine

Nov. 2-12

Mark A. Chapman Theatre

Be careful what you wish for ... follow a Baker and his wife, wishing to have a child; Cinderella, wishing to attend the King's Festival; and Jack, wishing his cow would give milk. Everyone's wish is granted, but the consequences of their actions may return to haunt them. This family-friendly musical is sure to delight all audiences.

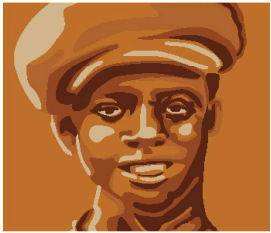


## WINTERDANCE '17

Nov. 30-Dec. 2

Mark A. Chapman Theatre

Join us this holiday season as we present a showcase of exciting dance styles, including jazz, tap, modern, ballet and African dance. Talented K-State students will perform original pieces choreographed by faculty.



## NOT WITHOUT LAUGHTER

Story by Langston Hughes, Adapted by Syl Jones, Music by Victor Zupanc

Feb. 1-11

The Purple Masque Theatre

Set in a small Kansas town at the turn of the century, *Not Without Laughter* is a poignant story of an African-American boy's coming of age and the harsh and painful realities of life in segregated America. Sandy is an idealist with a voracious appetite for books; he dreams of using his power of words to affect change. This story weaves the magical qualities of humanity — pain, love, and laughter.



## SPEED DATING TONIGHT!

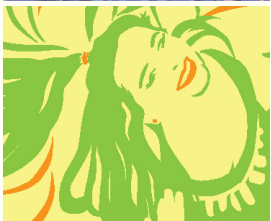
A COMIC MUSICAL/OPERA

March 8-11

Mark A. Chapman Theatre

Music and Lyrics by Michael Ching

Set in the Night Owl Café, 50 lonely hearted speed-daters hope to find a sufficient other. Not everyone will find a partner, but the process is sure to humor audiences.



## SPRINGDANCE '18

April 6-7

McCain Auditorium

Celebrate the arrival of spring with K-State Dance through a showcase of exciting dance styles, including jazz, tap, modern, ballet and African dance. Talented K-State students will perform original pieces choreographed by faculty.



## She Kills Monsters

by Qui Nguyen

April 19-29

Mark A. Chapman Theatre

Agnes Evans leaves her childhood home in Ohio following the death of her teenage sister, Tilly. When Agnes finds Tilly's Dungeons & Dragons notebook, however, she stumbles into a LARP-ing adventure including homicidal fairies, nasty ogres, and 90's pop culture in the imaginary world that was Tilly's refuge. Acclaimed playwright Qui Nguyen offers a heart-pounding homage to the geek and warrior within us all.



## BECKY SHAW

by Gina Gionfriddo

Sept. 28 - Oct. 1

The Purple Masque Theatre

A newlywed couple fixes up two romantically challenged friends. When an evening calculated for happiness takes a dark turn, crisis and comedy ensue in this wickedly funny play that asks what we owe the people we love and the strangers who land on our doorstep.



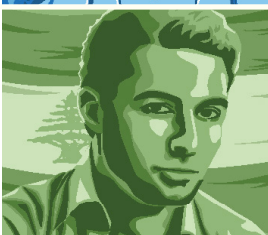
## THE EFFECT

by Lucy Prebble

Oct. 26-29

The Purple Masque Theatre

Two young drug trial participants, succumb to mutual attraction much to the frustration of the clinicians. This funny play explores questions of sanity, neurology and the limits of medicine, alongside ideas of fate, loyalty and the inevitability of physical attraction.



A staged reading of the student-written musical

## AN AMERICAN IN BEIRUT

Music by Alex Wakim, Lyrics by Alex Wakim and Jonah Ericson

Feb. 23-24

The Purple Masque Theatre

In this light-hearted musical comedy, Jack travels to Lebanon to meet with his cousin, Elie, and his wife, Nabila. Through their scheming, Jack falls in love with Anna, reconnecting him to their shared Lebanese culture.



National Award -winning student-written musical

## INN-DEPENDENT

Music, Lyrics, and Book by Blake Cordell

April 12-15

The Purple Masque Theatre

The Stackman Inn, a historic building and family operation, struggles to stay in business. Young and optimistic new bellhop, Arty, hopes to strengthen their team, despite the distractions of a manipulative inspector. Arty is determined to unite his coworkers in order to keep his job, save a family's livelihood, and maybe even fall in love.

SECOND STAGE

## HOW TO GET TICKETS:

Online: [k-state.edu/mtd/tickets](http://k-state.edu/mtd/tickets)

By phone: 785-236-8638

In person: 119 Nichols Hall\* or one hour prior to curtain at the performance venue.

As always, K-State Theatre and Dance charges NO FEES to tickets purchased online or by phone and delivered via e-ticket. Additional fees apply to will call or mailed tickets.

\*Please note that the box office in 119 Nichols is open based on student availability. *This, like the online box office itself, is to help keep ticket prices more affordable.* We encourage patrons to purchase online or over the phone. If in-person purchases are preferred, please call ahead to ensure prompt assistance.

## TICKET PRICES:

Mainstage (including tax)	Plays	Musical and Opera
General public	\$16	\$19.50
Seniors (over 55) and military	\$14	\$17.50
K-State faculty/staff	\$14	\$17.50
KSU Student/youth (under 18)	\$11	\$14

Second Stage (including tax)	Plays	Musical and Opera
General public	\$9	\$11
Seniors (over 55) and military	\$7.75	\$9.75
K-State faculty/staff	\$7.75	\$9.75
KSU Student/youth (under 18)	\$5.75	\$7.75

## SUBSCRIPTIONS:

Season Subscribers receive 20 percent off when purchasing one or more tickets to five or more events. Simply apply the discount code **SEASON17** upon checkout.

As a subscriber, you also will receive notices about preshow events, backstage tours, the annual president/provost's reception and special events such as the annual Music, Theatre, and Dance Extravaganza on Feb. 16, 2018, in the K-State Student Union.

## GROUP DISCOUNTS

Groups of 10 or more receive a 20 percent discount. For more information or assistance in planning your party, contact the K-State Theatre marketing office at 785-236-8638.



# Theatre and Dance Season

## 2017-2018



**KANSAS STATE**  
UNIVERSITY

School of Music, Theatre, and Dance

**KANSAS STATE**  
UNIVERSITY

School of Music, Theatre, and Dance

109 McCain Auditorium  
1501 Goldstein Circle  
Manhattan, KS 66506-0109  
201-002

We are educators - shaping the future by igniting and developing our students' creativity.

As patrons, we hope that you share this commitment - to develop the best in each other and ourselves. The theatre is our laboratory - we invite you to share in our experiment.

**SEE THEATRE**

### Notice of Nondiscrimination

Kansas State University is committed to nondiscrimination in admissions, programs and employment. Inquiries and complaints: Contact Director of Institutional Equity, Kansas State University, 103 Edwards Hall, Manhattan, KS 66506-4801, (Phone) 785-532-6220; (TTY) 785-532-4807.

**KANSAS STATE**

**UNIVERSITY**

**KSU THEATRE FUND**

Here is my check or credit card authorization for a gift of:

☐ \$1,000   ☐ \$250   ☐ \$50   ☐ Other \$ \_\_\_\_\_  
☐ \$500   ☐ \$100   ☐ \$25

Name (print) \_\_\_\_\_

Address \_\_\_\_\_

City \_\_\_\_\_ State \_\_\_\_\_ ZIP \_\_\_\_\_

Phone \_\_\_\_\_ Email \_\_\_\_\_

**Please make check payable to Kansas State University Foundation**

**Credit card payment:**



If this is a business credit card, business name: \_\_\_\_\_

*As added benefit to our donors, the foundation absorbs the fee charged by your credit card company.*

CARD NUMBER	EXP. DATE
<input type="text"/>	<input type="text"/>

SIGNATURE \_\_\_\_\_ PHONE \_\_\_\_\_  
Required for credit card gifts

**Or make your gift online at [www.found.ksu.edu/give/theatre](http://www.found.ksu.edu/give/theatre)**

- ☐ Contact me/us about creating a scholarship.
- ☐ Contact me/us about gifts that pay lifetime income.
- ☐ I/We have provided for K-State in my/our will.

### Matching gift information

If you or someone in your household works for a matching gift company, contact your human resources department to see if your gift qualifies for a company match. For more information, contact our matching gift coordinator by calling 800-432-1578 or visit [www.found.ksu.edu/match](http://www.found.ksu.edu/match).

**Thank you for your generous support!**

Please return this card to: KSU Foundation, P.O. Box 9200, Shawnee Mission, KS 66201-1800.

06180003

F29300